

2024 IOWA INDUSTRY PROFILE

CONSTRUCTION



IOWA WORKFORCE DEVELOPMENT

What is Construction?

The **Construction** sector is comprised of establishments primarily engaged in the construction of buildings, engineering projects (e.g., highways and utility systems) or in the construction trades.

Establishments primarily engaged in the preparation of sites for new construction or primarily engaged in subdividing land for sale as building sites are also include in this sector.

Construction work done may include new work, additions, alterations or maintenance and repairs. Activities of these establishments generally are managed at a fixed place of business, but usually perform construction activities at multiple project sites.

Source: www.bls.gov/cew/bls_naics/bls_naics_app.htm

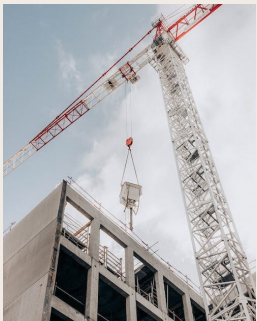
Industry Employment & Wages

5.5% - Of all covered public and private employment in Iowa, with 86,476 jobs.

19.3% higher - than the statewide average of \$61,352 for all industries, the 2024 average annual wage for the sector was \$73,206. Wages in this sector have also been steadily on the rise each year since 2017, increasing by 32.1 percent paying an annual average wage of \$73,206 in 2024

10.6% increase - In employment since the pandemic, an increase of 10.6 percent, adding 8,261 jobs in that time.

Establishment Facts



9,653

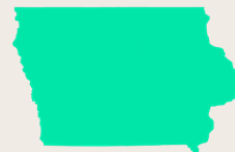
Construction locations across Iowa in 2024

6,104

Specialty Trade Contractor locations represented the majority of establishments within the sector across Iowa in 2024, followed by Construction of Buildings with 2,529 locations. Heavy & Civil Engineering Construction is third with 1,020 establishments.



\$81,054 - National Annual Average Wage*



\$73,507 - Iowa Annual Average Wage*

9.3% lower annual average wage in Iowa for this sector than the national average. Iowa had the fourth lowest annual average wage for this sector compared to its neighboring states, with Kansas, Nebraska and South Dakota being lower. Illinois had the highest wage reporting \$90,842

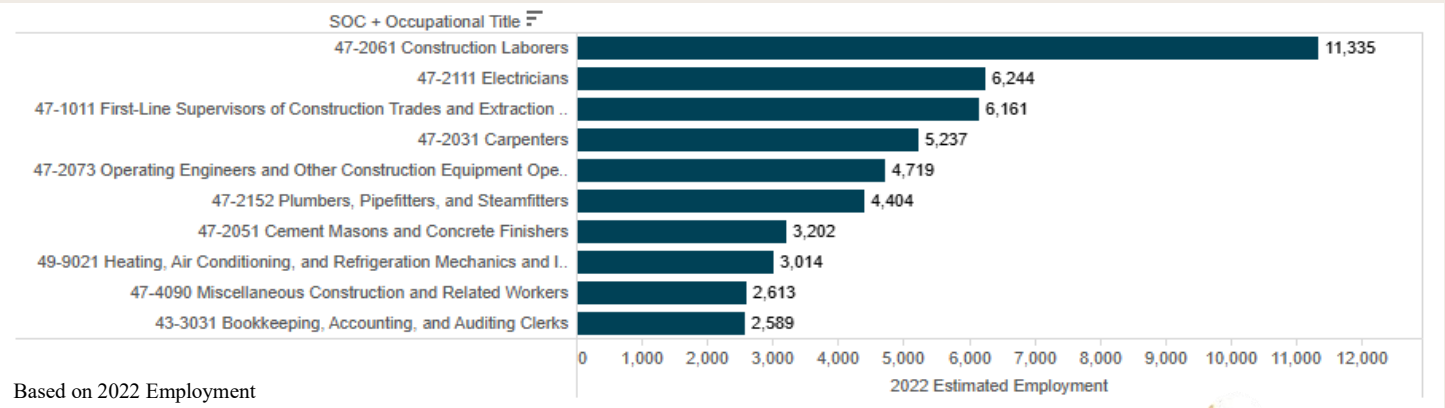
Source: Quarterly Census of Employment and Wages (QCEW), Bureau of Labor Statistics
Iowa Workforce Development
<https://workforce.iowa.gov/labor-market-information/>

*Annual Average Wage only includes private employment

<https://www.iowalmi.gov/qcew>

CONSTRUCTION Iowa Industry Profile

Top 10 Occupations for Construction



13.7% - of all employment within the sector was held by individuals in the Construction Laborers Occupations.

2024-4th Qtr Industry Subsector Breakout by Employment & Wages

Industry Description	Locations	Average Monthly Employment	Average Weekly Wage Calculation
Grand Total	9,713	86,517	\$1,608
Specialty Trade Contractors	6,149	56,364	\$1,539
Construction of Buildings	2,535	16,591	\$1,646
Heavy and Civil Engineering Construction	1,029	13,562	\$1,849

65.1% -

of employment is within the largest subsector, Specialty Trade Contractors, which employed 56,364 workers in 2024

\$1,849 - average weekly pay in Heavy and Civil Engineering Construction subsector was the highest in the industry

Contact Information

Iowa Workforce Development, Employment Statistics Bureau

1000 E Grand Ave
Des Moines, IA 50319
800-532-1249

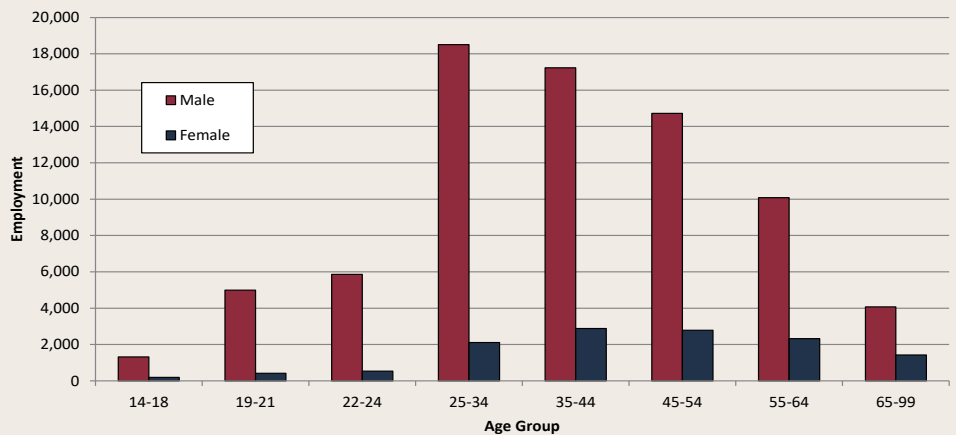
Fax: 515-281-8195
iwd.lmi@iwd.iowa.gov

www.iowaworkforcedevelopment.gov

*Equal opportunity employer/program.
Auxiliary aids and services are available upon request to individuals with disabilities.*

TTY 515-281-4748
1-800-831-1399

Industry Distribution by Age and Gender, 4th Quarter 2024



85.8%- majority of employment for this sector was held by males, while females accounted for 14.2 percent of the workforce.

Source: Quarterly Census of Employment and Wages (QCEW), Bureau of Labor Statistics Iowa Workforce Development
<https://workforce.iowa.gov/labor-market-information/>