

2024 IOWA INDUSTRY PROFILE

ACCOMMODATION & FOOD SERVICES



IOWA WORKFORCE DEVELOPMENT

What is Accommodation & Food Services?

The Accommodation and Food Services sector comprises firms that provide customers with lodging and/or prepare meals, snacks and beverages for immediate consumption. The sector includes both accommodation and food services because the two activities are often combined at the same establishment.

Excluded from this sector are civic and social organizations; amusement and recreation parks; theaters; and other recreation or entertainment facilities providing food and beverage services.

Source: www.bls.gov/cew/bls_naics/bls_naics_app.htm

Industry Employment & Wages

7.9% - Of all covered public and private employment in Iowa, with 123,200 jobs.

63.8% lower - Average annual wages of \$22,185 in this sector are 63.8 percent lower than the statewide average of \$61,352 for all industries; however, there is a greater ratio of part-time employment in addition to lower hourly rates than in other industries.

19.6% increase - Employment increased by 19.6 percent since the pandemic to 123,200 in 2024. Despite these gains, employment remains below the levels achieved as far back as 2016, well before the pandemic.

Establishment Facts



7,412

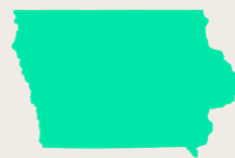
Accommodations & Food Services locations across Iowa in 2024

5,268

Restaurants and Other Eating Places made up the majority of the establishments within the sector across Iowa in 2024, with 5,268 locations. A distant second is Drinking Places (Alcoholic Beverages), reporting 881 locations, with **Traveler Accommodation** subsector in third place reporting 756 locations. Room and Boarding Houses reported the lowest number, at 41 locations which is 0.6 percent of the sector's total locations.



\$29,838 - National Annual Average Wage*



\$22,045 - Iowa Annual Average Wage*

26.1% lower annual average wage in Iowa for this sector than the national average. Iowa also had the lowest annual average wage for this sector compared to its neighboring states. Illinois reported the highest annual average wage of \$31,130

Source: Quarterly Census of Employment and Wages (QCEW), Bureau of Labor Statistics
Iowa Workforce Development
<https://workforce.iowa.gov/labor-market-information/>

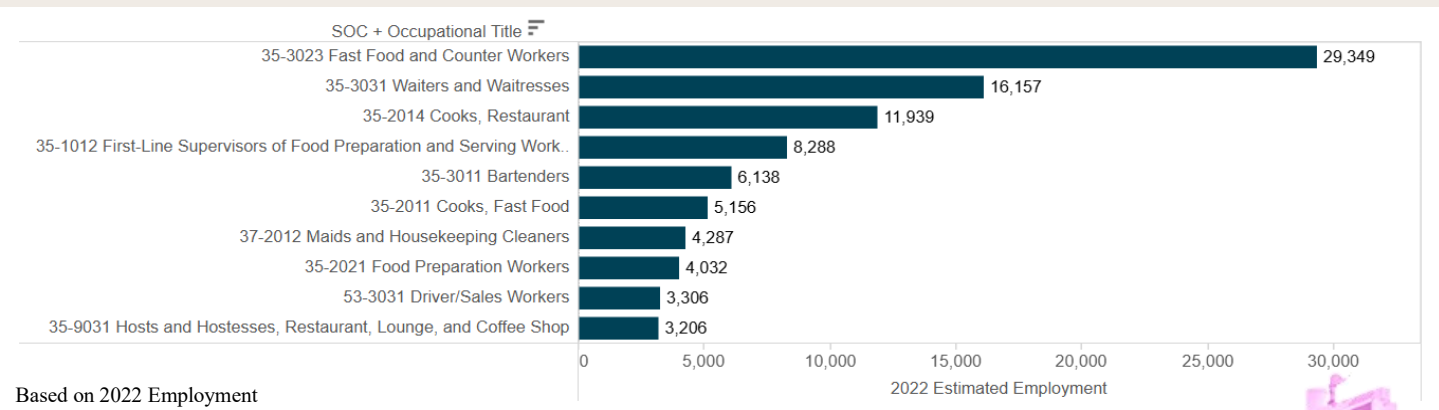
*Annual Average Wage only includes private employment

<https://www.iowalmi.gov/qcew>

ACCOMMODATION & FOOD SERVICES

Iowa Industry Profile

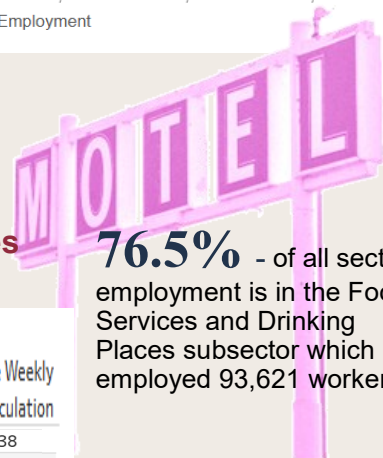
Top 10 Occupations for Accommodation & Food Services



25% - of all employment within the sector is listed as the occupation Fast Food and Counter Workers

2024-4th Qtr Industry Subsector Breakout by Employment & Wages

Industry Description	Locations	Average Monthly Employment	Average Weekly Wage Calculation
Grand Total	7,470	122,389	\$438
Restaurants and Other Eating Places	5,330	93,621	\$400
Traveler Accommodation	755	17,510	\$646
Drinking Places (Alcoholic Beverages)	872	6,505	\$300
Special Food Services	421	4,294	\$609
RV (Recreational Vehicle) Parks and Recreatio..	51	280	\$537
Rooming and Boarding Houses, Dormitories, a..	41	179	\$360



76.5% - of all sector employment is in the Food Services and Drinking Places subsector which employed 93,621 workers.

\$646 - the highest average weekly pay in this industry was in Traveler Accommodation.

Contact Information

Iowa Workforce Development, Employment Statistics Bureau

1000 E Grand Ave
Des Moines, IA 50319
800-532-1249

Fax: 515-281-8195

iw@iwd.iowa.gov

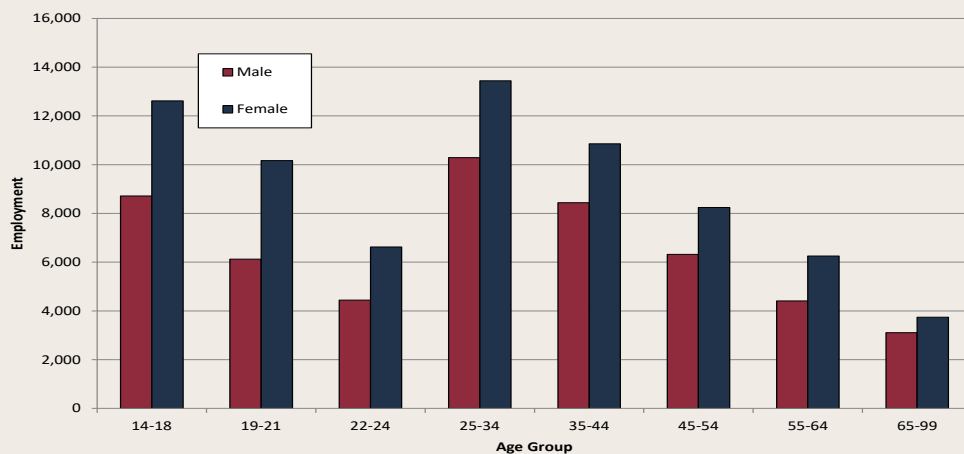
www.iowaworkforcedevelopment.gov

Equal opportunity employer/program.
Auxiliary aids and services are available upon request to individuals with disabilities.

TTY 515-281-4748

1-800-831-1399

Industry Distribution by Age and Gender, 4th Quarter 2024



58.1%-Females made up the majority of employment for this sector accounting for 58.1 percent, while men accounted for 41.9 percent of the workforce.

Source: Quarterly Census of Employment and Wages (QCEW), Bureau of Labor Statistics
Iowa Workforce Development
<https://workforce.iowa.gov/labor-market-information/>