

2024 IOWA INDUSTRY PROFILE

EDUCATION



IOWA WORKFORCE DEVELOPMENT

What is Education Services?

The **Educational Services** sector comprises establishments that provide instruction and training in a wide variety of subjects. Specialized establishments, such as schools, colleges, universities, and training centers, provide this instruction and training.

These establishments may be privately owned and operated for profit or not for profit, or they may be publicly owned and operated. They may also offer food and accommodation services to their students.

Source: www.bls.gov/cew/bls_naics/bls_naics_app.htm

Industry Employment & Wages

9.6% - Of all covered public and private employment in Iowa, with 150,418 jobs.

11.3% lower - than the statewide average of \$61,352 for all industries, the 2024 average annual wage for the sector was \$54,424.

5.8% increase - In employment since the pandemic adding 8,198 jobs increasing through 2024, still not topping the high in 2018 which had 151,519 jobs. Wages have continually increased since 2014, jumping most significantly during the pandemic by 6.8 % in 2020 potentially as an attempt to try and retain or lure workers back.

Establishment Facts



3,110

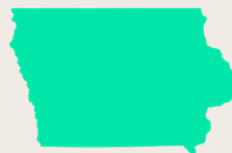
Educational Services locations across Iowa in 2024

1,581

Elementary & Secondary School locations represented the majority of establishments within the sector across Iowa in 2024, with 1,581 locations and 96,842 employees. With 444 establishments, the Other Schools & Instruction industry had the second-most locations, but only had 3,405 employees. Colleges & Universities had the second-highest employment, with 34,347 employees



\$64,023 - National Annual Average Wage



\$44,468 - Iowa Annual Average Wage

Source: *Quarterly Census of Employment and Wages (QCEW)*, Bureau of Labor Statistics
Iowa Workforce Development
<https://workforce.iowa.gov/labor-market-information/>

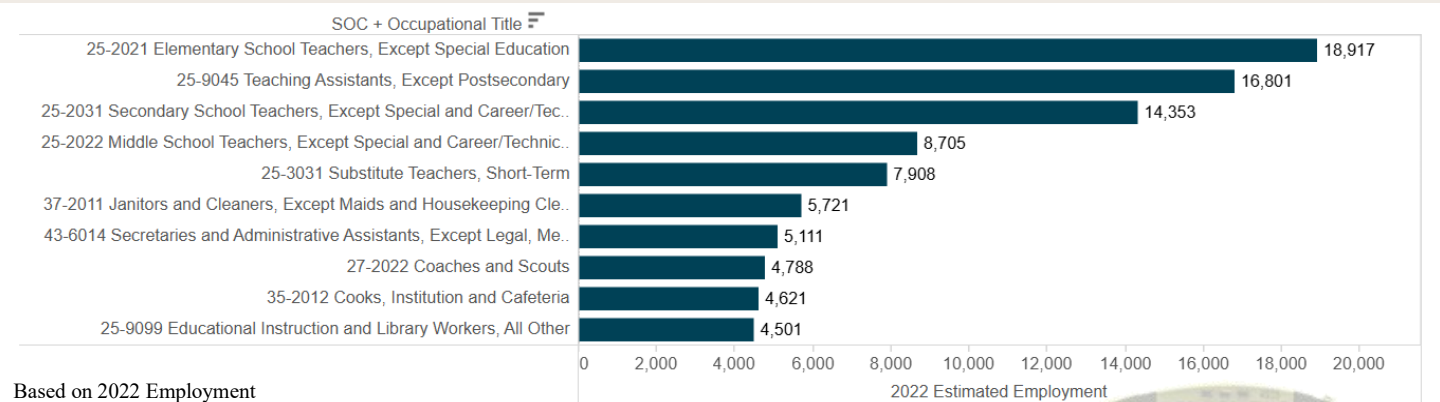
*Annual Average Wage only includes private employment

30.5% lower annual average wage in Iowa for this sector than the national average. Iowa has one of the lowest annual average wages for this sector compared to its neighboring states, with only North Dakota and South Dakota reporting lower. Illinois had the highest annual average wage reporting \$66,564.

EDUCATION

Iowa Industry Profile

Top 10 Occupations for Education



10.7% - of all employment within the sector was held by individuals in the Elementary School Teachers, Except Special Education occupations.

2024-4th Qtr Industry Subsector Breakout by Employment & Wages

Industry Description	Locations	Average Monthly Employment	Average Weekly Wage Calculation
Grand Total	3,143	157,776	\$1,043
Elementary and Secondary Schools	1,579	103,232	\$892
Colleges, Universities, and Professional Schools	368	34,902	\$1,556
Junior Colleges	98	9,944	\$837
Educational Support Services	344	4,895	\$1,471
Other Schools and Instruction	444	3,523	\$311
Technical and Trade Schools	110	759	\$1,033
Business Schools and Computer and Management Training	200	521	\$1,510

65.4% - of employment was in the largest subsector, Elementary & Secondary Schools, which employed 103,232 workers.

\$1,556 - average weekly pay in the Colleges, Universities, and Professional Schools subsector was highest in the industry

Contact Information

Iowa Workforce Development, Employment Statistics Bureau

1000 E Grand Ave
Des Moines, IA 50319
800-532-1249

Fax: 515-281-8195

iw.d.lmi@iwd.iowa.gov

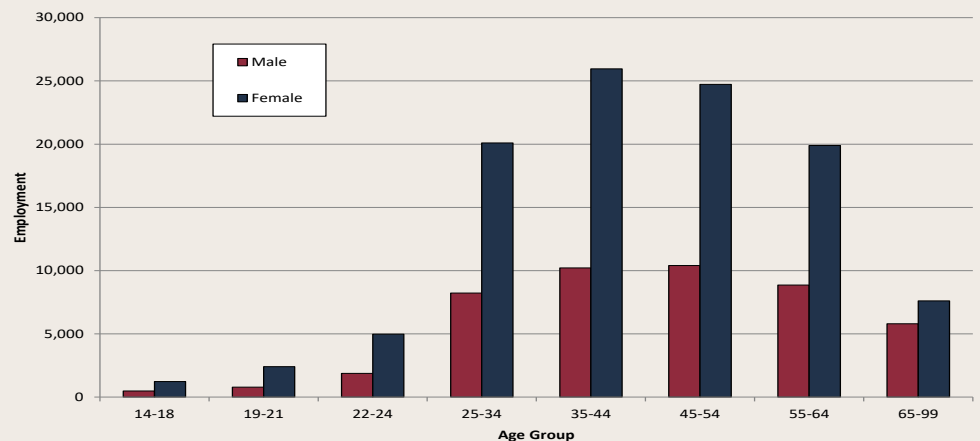
www.iowaworkforcedevelopment.gov

Equal opportunity employer/program. Auxiliary aids and services are available upon request to individuals with disabilities.

TTY 515-281-4748

1-800-831-1399

Industry Distribution by Age and Gender, 4th Quarter 2024



69.6%- of employment in this sector was held by females, while males accounted for 30.4 percent of the workforce.

Source: Quarterly Census of Employment and Wages (QCEW), Bureau of Labor Statistics Iowa Workforce Development <https://workforce.iowa.gov/labor-market-information/>