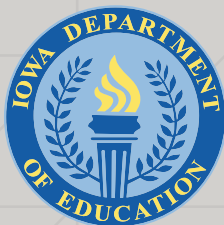


Adult Education and Literacy

Program Year 2017 Annual Report

(July 1, 2016 to June 30, 2017)



**COMMUNITY COLLEGES &
WORKFORCE PREPARATION**

PROSPERITY THROUGH EDUCATION

www.educateiowa.gov/ccpublications

**IOWA DEPARTMENT
OF EDUCATION**



Grimes State Office Building

Phone: 515-281-8260
Fax: 515-242-5988
www.educateiowa.gov

Ryan Wise
Director, Iowa Department
of Education
515-281-3436
ryan.wise@iowa.gov

Jeremy Varner
Administrator, Division of
Community Colleges and
Workforce Preparation
515-281-8260
jeremy.varner@iowa.gov

Barbara Burrows
Chief, Bureau of
Community Colleges
515-281-0319
barbara.burrows@iowa.gov

Alex Harris
State Director of
Adult Education and Literacy
515-281-3640
alex.harris@iowa.gov

Published:
2018

**State of Iowa
Department of Education**
Grimes State Office Building
400 E. 14th Street
Des Moines, IA 50319-0146

State Board of Education

Charles C. Edwards, Jr., President, Des Moines
Michael L. Knedler, Vice President, Council Bluffs
Brooke Axiotis, Des Moines
Michael Bearden, Gladbrook
Bettie Bolar, Marshalltown
Diane Crookham-Johnson, Oskaloosa
Angela English, Dyersville
Mike May, Spirit Lake
Mary Ellen Miller, Wayne County
Robert Nishimwe, Student Member, Des Moines

Administration

Ryan M. Wise, Director and Executive Officer
of the State Board of Education

**Division of Community Colleges
and Workforce Preparation**

Jeremy Varner, Division Administrator

Bureau of Community Colleges

Barbara Burrows, Bureau Chief
Alex Harris, State Director of Adult
Education and Literacy

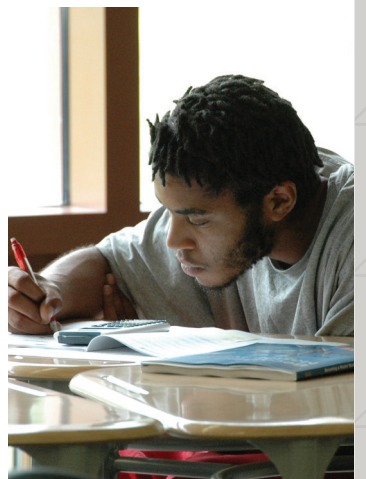
It is the policy of the Iowa Department of Education not to discriminate on the basis of race, creed, color, sexual orientation, gender identity, national origin, sex, disability, religion, age, political party affiliation, or actual or potential parental, family or marital status in its programs, activities, or employment practices as required by the Iowa Code sections 216.9 and 256.10(2), Titles VI and VII of the Civil Rights Act of 1964 (42 U.S.C. § 2000d and 2000e), the Equal Pay Act of 1973 (29 U.S.C. § 206, et seq.), Title IX (Educational Amendments, 20 U.S.C. §§ 1681 – 1688), Section 504 (Rehabilitation Act of 1973, 29 U.S.C. § 794), and the Americans with Disabilities Act (42 U.S.C. § 12101, et seq.). If you have questions or complaints related to compliance with this policy by the Iowa Department of Education, please contact the legal counsel for the Iowa Department of Education, Grimes State Office Building, 400 E. 14th Street, Des Moines, IA 50319-0146, telephone number: 515-281-5295, or the Director of the Office for Civil Rights, U.S. Department of Education, Citigroup Center, 500 W. Madison Street, Suite 1475, Chicago, IL 60661-4544, telephone number: 312-730-1560, FAX number: 312-730-1576, TDD number: 877-521-2172, email: OCR.Chicago@ed.gov.

About the Report

The Department of Education, Division of Community Colleges and Workforce Preparation (Division), is preparing this report in response to the Skilled Iowa and Job Creation Fund for the state appropriation for Adult Basic Education (ABE) and Adult Education Literacy (AEL) Programs (260C.50). This report was coordinated by the Division with the assistance of Iowa's 15 community colleges.

Acknowledgments

The staff and administration of the Division wish to acknowledge and thank the 15 community college presidents and their AEL staff for their assistance in developing this report. The figures noted in this report were obtained from each of Iowa's 15 community colleges via the Community College Management Information System (MIS) and various reporting tools/databases utilized by the Department.



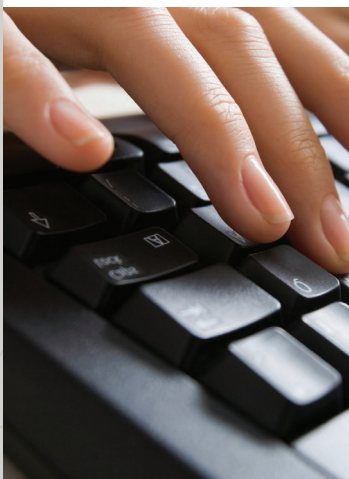


Table of Contents

About the Report	iii
Acknowledgments	iii
Introduction	2
Eligible Costs	2
Program Components	3
Process	3
Methods in Reporting	4
Analysis	5
Appendix: Tables and Figures	6
<i>Table 1: AEL Fiscal Summary for All Programs: FY17</i>	6
<i>Table 2A: AEL Program Summary by College: FY17</i>	7
<i>Table 2B: AEL Program Summary by College: FY16</i>	7
<i>Table 3A: AEL Program Expenditures by College, State AEL: FY17</i>	8
<i>Table 3B: AEL Program Expenditures by College, State ESL: FY17</i>	8
<i>Table 3C: AEL Program Expenditures by College, State AEL: FY16</i>	9
<i>Table 3D: AEL Program Expenditures by College, State ESL: FY16</i>	9
<i>Figure 1A: AEL Program Expenditures by Quarter, State AEL: FY17</i>	10
<i>Figure 1B: AEL Program Expenditures by Quarter, State ESL: FY17</i>	10
<i>Table 4A: AEL Program Expenditures by College, Federal AEL: FY17</i>	11
<i>Table 4B: AEL Program Expenditures by College, Federal AEL: FY16</i>	11
<i>Figure 2: AEL Program Expenditures by Quarter, Federal AEL/IELCE: FY17</i> ...	12
<i>Table 5A: AEL Educational Functioning Level (EFL)¹ by College: FY17</i>	13
<i>Figure 3A: AEL Participant Comparison: FY16 and FY17</i>	13
<i>Table 5B: AEL Educational Functioning Level (EFL)¹ by College: FY16</i>	14
<i>Figure 3B: AEL Post-Test Rate Comparison: FY16 and FY17</i>	14
<i>Table 6A: AEL Performance¹ Summary of Completers by EFL: FY17</i>	15
<i>Table 6B: AEL Performance¹ Summary of Completers by EFL: FY16</i>	15
<i>Figure 4: AEL Performance Summary by Level: FY16 and FY17</i>	16

Introduction

Adult education has a rich history in Iowa of providing services that assist adults in improving their skills, achieving their educational goals, and transitioning to further education or employment. Instruction is designed for adults functioning at the lowest levels of basic skills and/or needing English language instruction to advance their levels of learning.

As defined by Title II of the Workforce Innovation and Opportunity Act (WIOA), adult education enables adults to: (1) become literate and obtain the knowledge and skills necessary for employment and self-sufficiency; (2) obtain the educational skills necessary to become full partners in the educational development of their children; and (3) complete a secondary school education.

Adult education offers solutions. Its history of responding to learners' needs continues to address the skill gap and economic demands of Iowa's workforce regions. Whether a learner's goals are related to personal improvement, family literacy, further training, or employment, undereducated adults in Iowa need a system that provides clear pathways and support.

Eligible Costs

Funds received from state funding for AEL programs adhere to the allowable use restrictions of the Adult Education and Family Literacy Act (AEFLA) and subsequent adult education legislation, except for administrative cost restrictions. Exceptions include the allowable use of funds for high school equivalency testing, administration, and associated costs. Only activities directly linked to AEL programs and



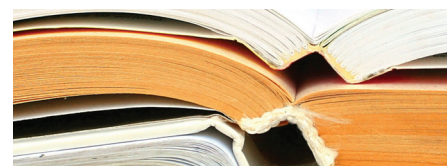
ADDRESSING IOWA'S NEEDS AND CHALLENGES THROUGH ADULT EDUCATION

In FY17, Iowa's adult education and literacy (AEL) programs served 11,688 participants, helping them improve their skills, achieve educational goals, and transition to further education or employment.



ADULTS WITHOUT HIGH SCHOOL DIPLOMAS

According to the U.S. Census Bureau's 2016 American Community Survey, 8.6 percent of Iowa's population, age 18 years and over (207,963), neither graduated from high school nor earned a high school equivalency diploma. In FY17, Iowa's adult education and literacy (AEL) programs awarded high school equivalency diplomas to 1,718 participants.



THE LIMITED ENGLISH PROFICIENT (LEP) POPULATION

Iowa's LEP population increased to 100,321 in 2016. The American Community Survey classified this population as having self-identified as "speaks English less than very well." Of this population, 51.5 percent are Spanish speaking, 24.2 percent are Asian/Pacific Islander, 15.4 percent are Indo-European, and 8.9 percent spoke other languages. In FY17, Iowa's AEL programs served 4,853 participants enrolled in English as a second language programs.



instruction shall be funded with monies received from state AEL funds. Since the intent of the state funds are to expand services and improve the quality of AEL programs, state funds can be used to supplement federal funds to deliver services to all eligible participants. Consideration should be given to providing AEL activities concurrently with workforce preparation activities and workforce training for the purpose of educational and career advancement.

Program Components

Eligible institutions maintain the ability to provide the following AEL services as deemed appropriate by the community or needs of their students:

1. Adult basic education.
2. Programs for adults of limited English proficiency.
3. Adult secondary education, including programs leading to the achievement of a high school equivalency diploma or a high school diploma.
4. Instructional services to improve student proficiencies necessary to function effectively in adult life, including accessing further education, employment-related training, or employment.
5. Assessment and guidance services adhering to state's assessment policy.
6. Programs and services stipulated by current and subsequent adult education legislation.

Institutions shall effectively use technology, services, and delivery systems, including distance education, in a manner sufficient to increase the amount and quality of student learning and performance.

Process

AEL state funds are distributed based upon the state general aid (SGA) formula. However, state funds designated for English as a Second Language (ESL) are jointly distributed by the Division and the community colleges based on the need for instruction in the region as determined by census survey and local outreach efforts.

Federal AEL funds are distributed by performance (15 percent) and need (85 percent) to all community colleges. These funds include a specific carve-out for English Language and Civics Education, averaging \$236,358, over the last two years. Each federally-funded program submits an annual local plan, detailing the services and strategies for the upcoming year. Each plan highlights the local area needs, past effectiveness, and current planned activities that demonstrate continuous improvement. Added emphasis has been placed on the criteria of sufficient intensity and duration with collaborative approaches for providing support services for participants.

Methods in Reporting

For this report, a fiscal year (FY) is the 12-month period from July 1 to June 30. For an eligible individual to enroll in AEL services, a pre-test is administered that measures basic skill levels. As long as the individual scores under a 12th grade level in math and/or reading, or lacks a high school credential, they are eligible for services and counted as an eligible individual for reporting purposes. To be counted as an AEL participant, for federal reporting, eligible individuals must attend instruction for 12 or more hours.

Total courses are reported through the Division's MIS, and include those taken by eligible individuals and participants. Each eligible individual and participant can be enrolled in multiple courses, such as ESL and basic skill development, throughout the year.

Under WIOA, measurable skill gain (MSG) is used to demonstrate performance and is indicated by participants who complete an educational functioning level (EFL) or complete the high school equivalency diploma (HSED). An EFL is a defined set of levels at which reportable individuals are initially placed based on their abilities to perform literacy-related tasks in specific content areas determined by a pre-test. Making an EFL gain is achieved by a post-test in either a reading or math content area depicting a sufficient score to move to the next level, often demonstrating a grade or multiple grade level advancement.

In addition, a period of participation (POP) was introduced by the National Reporting System (NRS) to track participants that exit services and then re-enter within the program year. According to NRS, *a period of participation begins each time an individual enters adult education and gets at least 12 hours of service¹ and a POP ends when there is no service or scheduled service for 90 days¹.* Each participant can have multiple POPs; however, only one MSG per POP is reported. Comparison with previous year enrollment and performance is not applicable due to the introduction of POP and the modification of MSG.

¹ Defining Key Elements of NRS Report. Retrieved from <http://www.nrsweb.org/trainings/events/DefiningKeyElements.aspx>

Analysis

This report compares AEL financial allocations, expenditures, and performance for fiscal year 2016 and 2017 (FY16 and FY17).

The financial allocations for FY17 include state appropriated funds for AEL and ESL programs. Programs receive an annual allocation of \$5,140,000 to expand their services to eligible individuals. Federal allocations to Iowa's AEL programs has steadily declined over the past 10 years by 26.8 percent. In FY17, Iowa received \$3,450,141, of which \$2,992,842 was allocated to local programs. The remaining \$457,299 was kept at the state level for leadership and administrative purposes.

In addition to new funds, programs carried forward \$967,720 from both state and federal funds from FY16. This resulted in available funds for FY17 totaling \$9,100,562. Many programs have used this funding to expand their access to services within their regions and to improve partnerships with workforce delivery services as part of the WIOA. Of the \$9,100,562 available in FY17, 76.5 percent (\$6,959,254) was spent on direct instruction. Total administrative expenditures by 15 programs was 8.8 percent (\$803,621) of the available funds. In FY17, 90.5 percent of the available funds were spent.

In FY17, Iowa's AEL programs served 11,688 participants (unduplicated). Of the 11,688 participants, 371 participated in multiple POPs, resulting in 12,059 reported POPs. To determine MSG, indicated by educational functioning levels (EFL), AEL programs pre- and post-test participants after a minimum of 40 instructional hours. Without a post-test, measuring EFL would be impossible.

Based on the first period of participation, 60.7 percent of the 11,688 participants were post-tested. Of those, 55.5 percent achieved an EFL. Since MSG also includes the awarding of Iowa's High School Equivalency Diploma (HSED) in FY17, another 1,718 participants earned MSG via their acquisition of their diplomas. For the 12,059 POPs reported, there were 5,339 MSG (either made an EFL or received the HSED), resulting in an overall MSG for the state of 44 percent.

Core outcome measures reported for AEL, which typically includes entering and retaining employment or entering postsecondary or transition training, was not available at the time of this report due to lags in available wage information from Iowa Workforce Development and collegiate data from the National Student Clearinghouse. This data will be reported in a federal report and partially captured in the annual publication, *The 2017 Annual Condition of Iowa's Community Colleges 2017*.

The remaining report includes tables summarizing the FY17 and FY16 fiscal and performance data in summary and by individual community college.

Appendix: Tables and Figures

TABLE 1: AEL FISCAL SUMMARY FOR ALL PROGRAMS: FY17

State Fiscal Year Budget

Carry Forward from Prior FY ¹	\$674,295
Current Year State Allocation	\$5,140,000

Total Available State Funds (AEL and ESL) \$5,814,295

State AEL Line Item	Expenses per Quarter				YTD. Expend.
	Q1	Q2	Q3	Q4	
Administrative Expenses	\$111,605	\$132,290	\$125,103	\$169,788	\$538,787
Instructional Expenses	\$633,546	\$746,270	\$700,808	\$882,986	\$2,963,609
Professional Development Expenses	\$8,984	\$18,532	\$19,373	\$34,930	\$81,820
HSED Expenses	\$79,103	\$85,228	\$72,283	\$90,844	\$327,458
Total	\$833,238	\$982,321	\$917,567	\$1,178,548	\$3,911,674
Carry Forward to New FY:				\$542,113	

State ESL Line Item	Expenses per Quarter				YTD. Expend.
	Q1	Q2	Q3	Q4	
Administrative Expenses	\$12,678	\$18,024	\$15,948	\$20,980	\$67,631
Instructional Expenses	\$235,607	\$329,519	\$308,508	\$310,495	\$1,184,129
Professional Development Expenses	\$496	\$1,642	\$4,407	\$6,387	\$12,931
Total	\$248,781	\$349,186	\$328,863	\$337,862	\$1,264,691
Carry Forward to New FY:				\$95,818	

Federal Fiscal Year Budget

Carry Forward from Prior FY	\$293,425
Current Year State Allocation	\$2,992,842

Total Available Federal Funds (AEL and IELCE²) \$3,286,267

Federal AEL/IELCE Line Item	Expenses per Quarter				YTD. Expend.
	Q1	Q2	Q3	Q4	
Administrative Expenses	\$63,000	\$48,656	\$42,763	\$42,784	\$197,203
AEL Instructional Expenses	\$419,518	\$698,599	\$641,847	\$781,679	\$2,541,642
IELCE Instructional Expenses	\$51,775	\$113,873	\$34,949	\$69,276	\$269,873
Professional Development Expenses	\$11,291	\$18,452	\$5,546	\$11,809	\$47,098
Total	\$545,583	\$879,580	\$725,105	\$905,548	\$3,055,817
Carry Forward to New FY:				\$230,450	

1 Note corrections made in Table 3C and 3D resulting in a revised Carry Forward.

2 EL/Civics was redefined as Integrated English Literacy and Civics Education (IELCE) by the WIOA.

TABLE 2A: AEL PROGRAM SUMMARY BY COLLEGE: FY17

College	Federal Allocation	State Allocation	Total Expenditures ¹	Total Courses ²	Participants ³	Total POP ⁴	Total POP with MSG ⁵	HSED Awards
Northeast Iowa	\$127,918	\$230,476	\$371,027	422	220	239	43	44
North Iowa Area	\$105,727	\$228,748	\$347,687	398	240	253	120	47
Iowa Lakes	\$74,020	\$211,262	\$295,747	111	165	170	56	15
Northwest Iowa	\$84,110	\$125,451	\$211,534	590	201	216	80	4
Iowa Central	\$189,509	\$290,150	\$479,659	2426	1123	1172	681	204
Iowa Valley	\$150,780	\$241,563	\$458,320	1763	563	588	307	65
Hawkeye	\$194,383	\$334,950	\$529,333	2838	737	754	409	47
Eastern Iowa	\$274,274	\$416,719	\$652,577	2892	1098	1125	490	213
Kirkwood	\$287,106	\$730,339	\$1,071,391	6851	1367	1406	568	181
Des Moines Area	\$670,827	\$1,046,189	\$1,711,452	8068	3141	3239	1321	461
Western Iowa Tech	\$277,469	\$338,643	\$559,058	2724	1002	1025	479	89
Iowa Western	\$168,542	\$284,079	\$466,617	2549	653	671	281	151
Southwestern	\$91,153	\$121,354	\$228,732	728	165	166	71	33
Indian Hills	\$149,916	\$342,993	\$478,001	1771	440	450	167	85
Southeastern	\$147,107	\$197,084	\$371,048	2181	573	585	266	79
TOTAL	\$2,992,842	\$5,140,000	\$8,232,183	36,312	11,688	12,059	5,339	1,718

TABLE 2B: AEL PROGRAM SUMMARY BY COLLEGE: FY16

College	Federal Allocation	State Allocation	Total Expenditures ¹	Total Courses ²	Eligible Individuals ⁶	Participants ³	Skill Gains ⁷	HSED Awards
Northeast Iowa	\$126,820	\$231,876	\$380,255	584	306	292	77	41
North Iowa Area	\$103,398	\$230,258	\$260,193	527	394	262	151	67
Iowa Lakes	\$69,089	\$211,162	\$261,828	389	242	164	58	22
Northwest Iowa	\$85,028	\$126,684	\$239,289	692	321	192	80	12
Iowa Central	\$183,538	\$292,575	\$487,725	3001	1530	1197	664	207
Iowa Valley	\$147,321	\$242,926	\$439,924	1841	675	535	293	59
Hawkeye	\$198,699	\$332,971	\$671,778	2617	954	806	406	40
Eastern Iowa	\$291,312	\$415,315	\$670,213	3473	1881	1167	630	358
Kirkwood	\$264,751	\$737,239	\$940,823	5539	2418	1287	463	169
Des Moines Area	\$688,896	\$1,041,531	\$1,726,387	7892	3710	3389	1412	444
Western Iowa Tech	\$232,819	\$334,051	\$566,427	3651	1785	1141	534	82
Iowa Western	\$165,199	\$287,036	\$457,362	3439	1405	700	238	173
Southwestern	\$85,540	\$120,441	\$187,700	664	332	155	72	30
Indian Hills	\$160,373	\$338,167	\$685,882	1358	717	429	116	72
Southeastern	\$140,243	\$197,766	\$389,331	2327	1101	662	259	90
TOTAL	\$2,943,026	\$5,139,998	\$8,365,117	37,994	17,771	12,378	5,453	1,866

1 Includes carry over funds from previous FY.

2 Based on MIS enrollment; could be co-enrolled.

3 Students enrolled that attended 12+ hours with a pre-test.

4 Period of Participation in this FY.

5 MSG are determined by post-testing and achieving a sufficient score to move to the next

6 Represents unduplicated headcount.

7 Participants that persist with at least 40+ hours of instruction and post-test with an EFL gain.

TABLE 3A: AEL PROGRAM EXPENDITURES BY COLLEGE, STATE AEL: FY17

College	Administrative	Professional Development	AEL Instruction	HSED Expenses	Total Expenditures	Allocation Remaining
Northeast Iowa	\$29,356	\$0	\$175,124	\$0	\$204,481	\$2,893
North Iowa Area	\$34,086	\$16,060	\$138,699	\$10,489	\$199,334	\$300,542
Iowa Lakes	\$79,170	\$5,475	\$109,310	\$734	\$194,689	\$0
Northwest Iowa	\$3,525	\$0	\$49,135	\$0	\$52,660	\$77,362
Iowa Central	\$34,633	\$1,572	\$183,407	\$113	\$219,724	\$0
Iowa Valley	\$5,475	\$0	\$192,393	\$5,645	\$203,513	\$1,846
Hawkeye	\$92,161	\$12,773	\$141,038	\$15,873	\$261,846	\$0
Eastern Iowa	\$16,263	\$16,365	\$275,426	\$23,605	\$331,660	\$0
Kirkwood	\$75,824	\$9,036	\$501,993	\$20,276	\$607,129	\$0
Des Moines Area	\$17,807	\$7,053	\$482,808	\$142,088	\$649,756	\$0
Western Iowa Tech	\$1,491	\$1,206	\$180,357	\$17,284	\$200,338	\$15,040
Iowa Western	\$45,678	\$2,444	\$163,044	\$20,673	\$231,838	\$1,957
Southwestern	\$13,532	\$1,075	\$75,367	\$9,607	\$99,581	\$65,422
Indian Hills	\$65,239	\$3,025	\$141,679	\$61,070	\$271,014	\$29,504
Southeastern	\$24,547	\$5,737	\$153,828	\$0	\$184,112	\$47,547
Total	\$538,787	\$81,820	\$2,963,609	\$327,458	\$3,911,674	\$542,113
% of Total	13.8%	2.1%	75.8%	8.4%	100.0%	

TABLE 3B: AEL PROGRAM EXPENDITURES BY COLLEGE, STATE ESL: FY17

College	Administrative	Professional Development	AEL Instruction	Total Expenditures	Allocation Remaining
Northeast Iowa	\$23,249	\$0	\$15,653	\$38,902	\$0
North Iowa Area	\$0	\$1,230	\$39,463	\$40,693	\$0
Iowa Lakes	\$0	\$88	\$31,266	\$31,354	\$0
Northwest Iowa	\$5,543	\$0	\$32,604	\$38,147	\$5,232
Iowa Central	\$0	\$0	\$70,426	\$70,426	\$0
Iowa Valley	\$0	\$0	\$106,179	\$106,179	\$0
Hawkeye	\$18,893	\$0	\$54,211	\$73,104	\$0
Eastern Iowa	\$0	\$775	\$84,284	\$85,059	\$0
Kirkwood	\$417	\$1,239	\$121,555	\$123,210	\$0
Des Moines Area	\$11,303	\$8,876	\$376,254	\$396,433	\$0
Western Iowa Tech	\$2,357	\$0	\$91,917	\$94,274	\$28,991
Iowa Western	\$0	\$0	\$50,284	\$50,284	\$0
Southwestern	\$0	\$724	\$42,224	\$42,949	\$15,680
Indian Hills	\$2,428	\$0	\$56,345	\$58,772	\$1,147
Southeastern	\$3,441	\$0	\$11,466	\$14,907	\$44,767
Total	\$67,631	\$12,931	\$1,184,129	\$1,264,691	\$95,818
% of Total	5.3%	1.0%	93.6%	100.0%	

TABLE 3C: AEL PROGRAM EXPENDITURES BY COLLEGE, STATE AEL: FY16

College	Administrative	Professional Development	AEL Instruction	HSED Expenses	Total Expenditures	Allocation Remaining
Northeast Iowa	\$25,841	\$0	\$185,680	\$0	\$211,522	\$15,800
North Iowa Area	\$41,568	\$18,746	\$48,890	\$11,543	\$120,747	\$305,500
Iowa Lakes	\$78,187	\$7,635	\$79,304	\$0	\$165,127	\$14,781
Northwest Iowa ¹	\$29,587	\$1,081	\$133,331	\$0	\$163,998	\$41,524
Iowa Central	\$25,981	\$4,066	\$201,083	\$113	\$231,243	\$0
Iowa Valley ²	\$5,537	\$3,462	\$195,882	\$13,117	\$217,998	\$32,931
Hawkeye	\$362	\$31,141	\$369,899	\$500	\$401,902	\$0
Eastern Iowa	\$25,895	\$7,171	\$274,166	\$42,740	\$349,973	\$0
Kirkwood	\$72,129	\$14,721	\$558,481	\$20,625	\$665,956	\$0
Des Moines Area	\$18,754	\$8,842	\$441,431	\$180,928	\$649,955	\$0
Western Iowa Tech	\$5,040	\$2,980	\$198,004	\$9,215	\$215,239	\$0
Iowa Western	\$71,720	\$3,925	\$131,954	\$38,446	\$246,044	\$0
Southwestern	\$13,529	\$2,284	\$50,098	\$12,674	\$78,585	\$74,793
Indian Hills	\$21,049	\$15,227	\$281,156	\$92,166	\$409,597	\$17,443
Southeastern	\$24,543	\$7,747	\$194,958	\$2,758	\$230,032	\$68,014
Total	\$459,722	\$129,028	\$3,344,317	\$424,825	\$4,357,918	\$570,786
% of Total	10.6%	3.0%	76.9%	9.8%	100.0%	

TABLE 3D: AEL PROGRAM EXPENDITURES BY COLLEGE, STATE ESL: FY16

College	Administrative	Professional Development	AEL Instruction	Total Expenditures	Allocation Remaining
Northeast Iowa	\$18,237	\$2,971	\$23,828	\$45,035	\$0
North Iowa Area	\$0	\$71	\$39,506	\$39,577	\$6,321
Iowa Lakes	\$0	\$0	\$31,254	\$31,254	\$0
Northwest Iowa ¹	\$5,709	\$1,696	\$30,357	\$37,762	\$6,425
Iowa Central	\$0	\$0	\$72,944	\$72,944	\$0
Iowa Valley	\$0	\$0	\$74,605	\$74,605	\$37,044
Hawkeye	\$22,067	\$0	\$49,110	\$71,177	\$0
Eastern Iowa	\$0	\$1,729	\$82,020	\$83,749	\$0
Kirkwood	\$709	\$1,704	\$127,736	\$130,149	\$0
Des Moines Area	\$7,078	\$5,853	\$378,647	\$391,578	\$0
Western Iowa Tech	\$682	\$1,018	\$117,112	\$118,812	\$0
Iowa Western	\$0	\$0	\$63,829	\$63,829	\$0
Southwestern	\$0	\$160	\$29,672	\$29,832	\$27,485
Indian Hills ²	\$5,900	\$797	\$109,215	\$115,912	\$0
Southeastern ²	\$5,043	\$1,044	\$52,729	\$58,816	\$26,234
Total	\$65,425	\$17,043	\$1,282,564	\$1,365,031	\$103,509
% of Total	4.8%	1.2%	94.0%	100.0%	

1 Updates to reported value for Allocation Remaining.

2 Correction made by the Department for Allocation Remaining.

FIGURE 1A: AEL PROGRAM EXPENDITURES BY QUARTER, STATE AEL: FY17

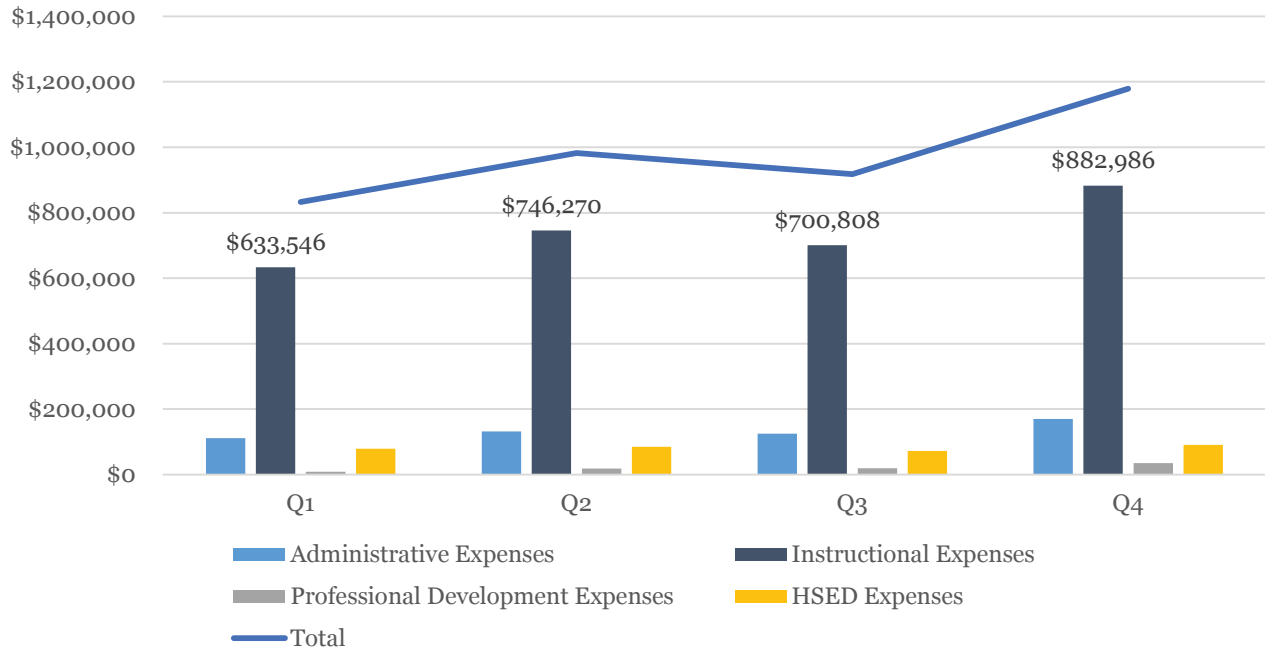


FIGURE 1B: AEL PROGRAM EXPENDITURES BY QUARTER, STATE ESL: FY17

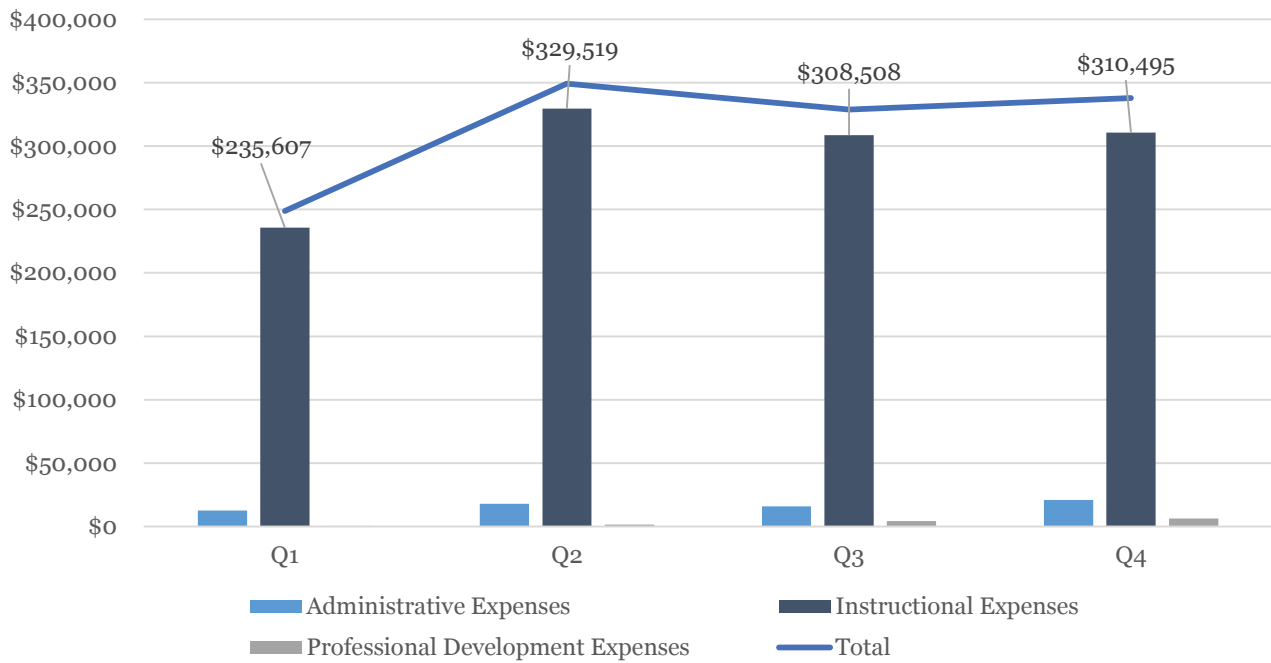


TABLE 4A: AEL PROGRAM EXPENDITURES BY COLLEGE, FEDERAL AEL: FY17

College	Administrative	Professional Development	AEL Instruction	IELCE Expenses	Total Expenditures	Allocation Remaining
Northeast Iowa	\$6,973	\$2,229	\$113,142	\$5,300	\$127,644	\$3,396
North Iowa Area	\$4,748	\$2,519	\$95,720	\$4,674	\$107,661	\$1,594
Iowa Lakes	\$3,563	\$2,367	\$61,360	\$2,415	\$69,704	\$7,958
Northwest Iowa ¹	\$12,172	\$1,415	\$99,284	\$7,856	\$120,727	\$3,451
Iowa Central	\$9,463	\$4,921	\$160,755	\$14,370	\$189,509	\$0
Iowa Valley ²	\$0	\$1,755	\$133,365	\$13,508	\$148,628	\$2,152
Hawkeye	\$9,719	\$4,876	\$164,591	\$15,197	\$194,383	\$0
Eastern Iowa	\$33,091	\$3,701	\$184,307	\$14,759	\$235,858	\$93,237
Kirkwood	\$16,593	\$7,580	\$278,814	\$38,065	\$341,052	\$66,087
Des Moines Area	\$28,771	\$7,022	\$555,739	\$73,730	\$665,263	\$9,606
Western Iowa Tech	\$13,838	\$2,852	\$220,081	\$27,674	\$264,446	\$13,466
Iowa Western	\$22,817	\$2,490	\$150,987	\$8,201	\$184,495	\$1,756
Southwestern	\$14,553	\$1,205	\$66,311	\$4,134	\$86,203	\$11,206
Indian Hills	\$7,496	\$2,058	\$103,738	\$34,922	\$148,214	\$1,702
Southeastern	\$13,407	\$107	\$153,448	\$5,068	\$172,030	\$14,838
Total	\$197,203	\$47,098	\$2,541,642	\$269,873	\$3,055,817	\$230,450
% of Total	6.5%	1.5%	83.2%	8.8%	100.0%	

TABLE 4B: AEL PROGRAM EXPENDITURES BY COLLEGE, FEDERAL AEL: FY16

College	Administrative	Professional Development	AEL Instruction	EL/Civics Instruction	Total Expenditures	Allocation Remaining
Northeast Iowa	\$7,599	\$2,478	\$108,300	\$5,321	\$123,698	\$3,122
North Iowa Area	\$4,616	\$2,458	\$87,759	\$5,001	\$99,870	\$3,528
Iowa Lakes	\$3,039	\$1,402	\$57,391	\$3,615	\$65,447	\$3,642
Northwest Iowa ¹	\$6,142	\$1,612	\$34,149	\$3,058	\$44,960	\$40,068
Iowa Central	\$8,762	\$4,070	\$155,039	\$15,667	\$183,538	\$0
Iowa Valley ²	\$0	\$2,969	\$130,181	\$14,171	\$147,321	\$0
Hawkeye	\$9,736	\$3,098	\$171,558	\$14,307	\$198,699	\$0
Eastern Iowa	\$35,234	\$2,517	\$194,869	\$3,881	\$236,491	\$54,821
Kirkwood	\$7,338	\$2,854	\$121,911	\$12,614	\$144,718	\$120,033
Des Moines Area	\$22,272	\$8,218	\$575,587	\$78,777	\$684,854	\$4,042
Western Iowa Tech	\$11,215	\$4,136	\$191,011	\$26,014	\$232,376	\$443
Iowa Western	\$22,271	\$3,802	\$113,365	\$8,051	\$147,489	\$17,710
Southwestern	\$11,501	\$1,761	\$62,358	\$3,663	\$79,284	\$6,256
Indian Hills	\$7,672	\$3,061	\$140,974	\$8,666	\$160,373	\$0
Southeastern	\$13,975	\$4,347	\$78,998	\$3,163	\$100,483	\$39,760
Total	\$171,372	\$48,783	\$2,223,450	\$205,969	\$2,649,601	\$293,425
% of Total	6.5%	1.8%	83.9%	7.8%	100.0%	

FIGURE 2: AEL PROGRAM EXPENDITURES BY QUARTER, FEDERAL AEL/IELCE: FY17

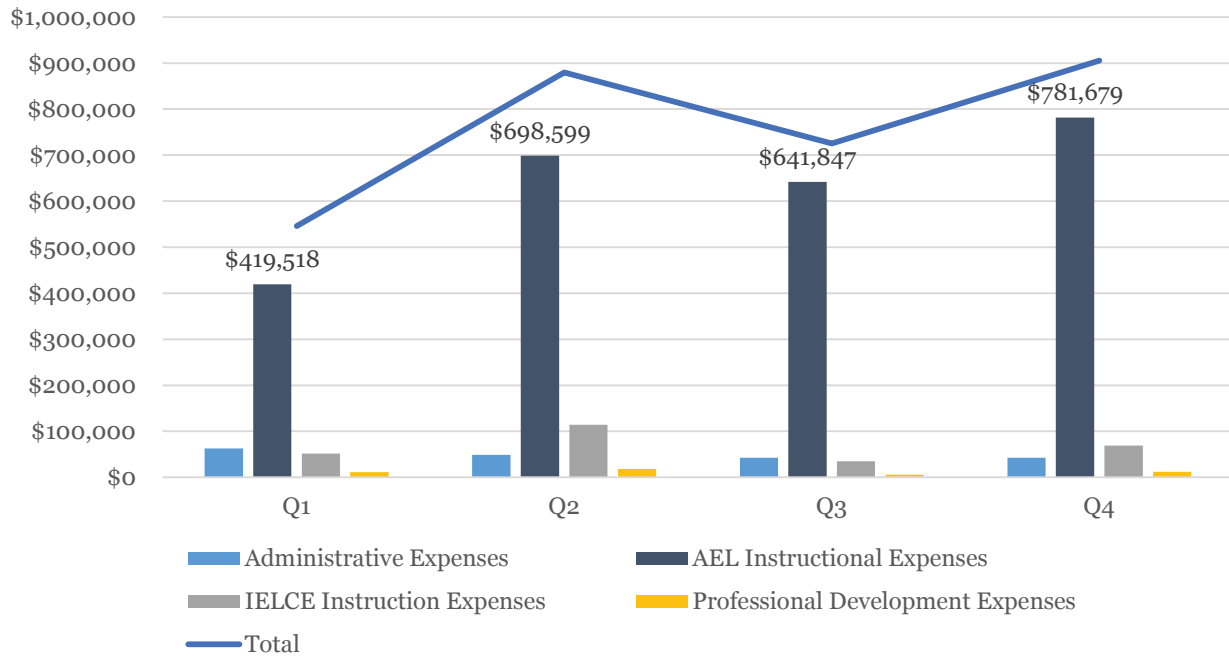


TABLE 5A: AEL EDUCATIONAL FUNCTIONING LEVEL (EFL)¹ BY COLLEGE: FY17

College	ABE Levels ² 1-4	ABE Levels ³ 5-6	ESL Levels ⁴ 1-6	Participants (total initial participation)	Participant Rate ⁵	Total Post- Tested ⁶	Post-Test Rate ⁷	EFL Gain ⁸ (in the first period of participation)
Northeast Iowa	137	33	50	220	83.7%	62	29.7%	18
North Iowa Area	138	44	58	240	76.2%	130	56.0%	70
Iowa Lakes	61	26	77	164	67.5%	91	56.5%	46
Northwest Iowa	71	11	119	201	70.5%	141	70.5%	73
Iowa Central	621	156	346	1,123	85.5%	755	71.5%	457
Iowa Valley	154	46	363	563	80.0%	378	68.5%	232
Hawkeye	169	81	487	737	72.7%	551	75.8%	356
Eastern Iowa	657	148	293	1,098	74.6%	594	55.5%	308
Kirkwood	663	192	512	1,367	53.6%	797	59.6%	418
Des Moines Area	1,395	229	1,517	3,141	74.7%	1,813	58.5%	964
Western Iowa Tech	271	61	670	1,002	74.5%	594	60.2%	381
Iowa Western	443	112	98	653	75.2%	354	57.3%	187
Southwestern	80	36	50	166	49.1%	83	55.3%	36
Indian Hills	203	51	186	440	69.7%	238	55.1%	99
Southeastern	437	109	27	573	64.4%	319	58.9%	184
Total	5,500	1,335	4,853	11,688	71.1%	6,900	60.7%	3,829
% of Total	47.1%	11.4%	41.5%	100.0%	-	-	-	-

- 1 A defined set of levels at which reportable individuals are initially placed based on their abilities to perform literacy-related tasks in specific content areas by a pre-test.
- 2 Includes grade levels 00-08.
- 3 ABE Level 5-6 or ASE (Adult Secondary High) grade levels 09-12.
- 4 ESL (English as a Second Language)—Includes grade levels 00-08.

- 5 Determined by dividing eligible Individuals by those who are enrolled as participants (attended 12+ hours).
- 6 Excludes ABE Level 6.
- 7 Determined by dividing number post-tested by total participants.
- 8 Participants with at least 40+ hours of instruction and post-test with a gain, sufficient to transition to the next level of instruction (reflected as a one to two grade level equivalency gain).

FIGURE 3A: AEL PARTICIPANT COMPARISON: FY16 AND FY17

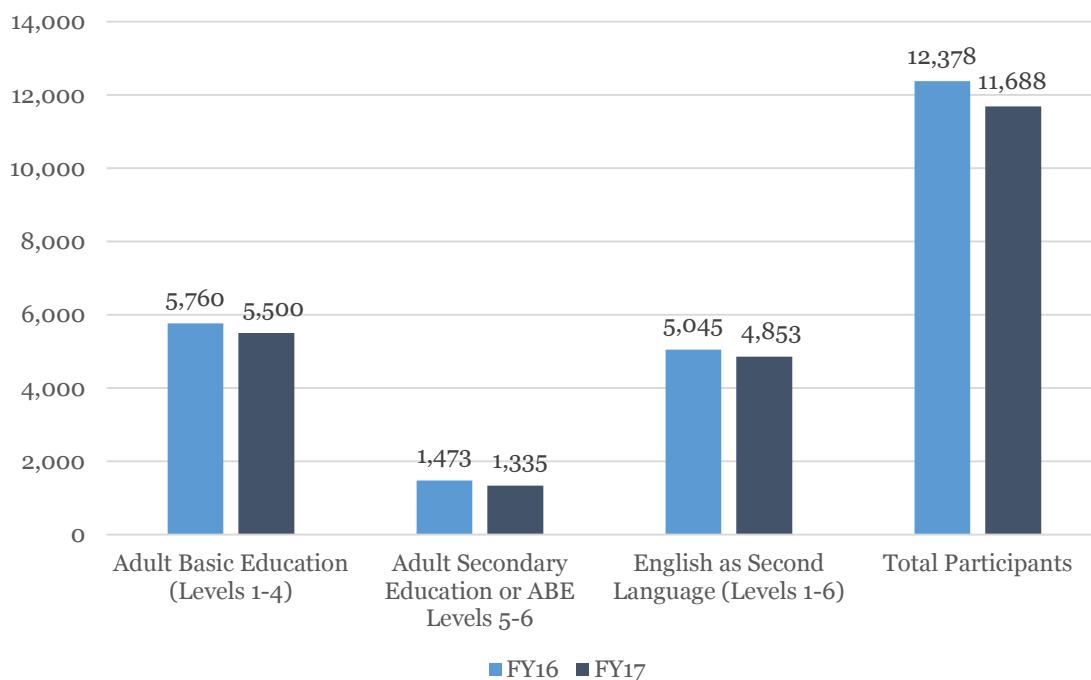


TABLE 5B: AEL EDUCATIONAL FUNCTIONING LEVEL (EFL)¹ BY COLLEGE: FY16

College	ABE ²	ASE ³	ESL ⁴	Total Participants	Participant Rate ⁵	Total Post-Tested ⁶	Post-Test Rate ⁷	EFL Gain ⁸
Northeast Iowa	183	52	57	292	95.4%	108	37.0%	77
North Iowa Area	55	37	70	262	66.5%	160	61.1%	151
Iowa Lakes	79	21	64	164	67.8%	97	59.1%	58
Northwest Iowa	60	20	112	192	59.8%	129	67.2%	80
Iowa Central	690	148	359	1,197	78.2%	839	70.1%	664
Iowa Valley	208	34	293	535	79.3%	375	70.1%	293
Hawkeye	245	73	488	806	84.5%	562	69.7%	406
Eastern Iowa	735	141	291	1,167	60.0%	751	64.4%	630
Kirkwood	560	231	496	1,287	53.2%	772	60.0%	463
Des Moines Area	1,347	336	1,706	3,389	91.3%	2,194	64.7%	1412
Western Iowa Tech	274	80	787	1,141	63.9%	716	62.8%	534
Iowa Western	504	98	98	700	49.8%	387	55.3%	238
Southwestern	76	36	43	155	46.7%	78	50.3%	72
Indian Hills	231	47	151	429	59.8%	221	51.5%	116
Southeastern	513	119	30	662	60.1%	384	58.0%	259
Total	5,760	1,473	5,045	12,378	69.7%	7,773	62.8%	5,453
% of Total	46.5%	11.9%	40.8%	100.0%	-	-	-	44.1%

1 A defined set of levels at which reportable individuals are initially placed based on their abilities to perform literacy-related tasks in specific content areas by a pre-test.
 2 Includes grade levels 00-08.
 3 ABE Level 5-6 or ASE (Adult Secondary High) grade levels 09-12.
 4 ESL (English as a Second Language)—Includes grade levels 00-08.

5 Determined by dividing eligible Individuals by those who are enrolled as participants (attended 12+ hours).
 6 Excludes ABE Level 6.
 7 Determined by dividing by number post-tested by total participants.
 8 Participants with at least 40+ hours of instruction and post-test with a gain, sufficient to transition to the next level of instruction (reflected as a one to two grade level equivalency gain).

FIGURE 3B: AEL POST-TEST RATE COMPARISON: FY16 AND FY17

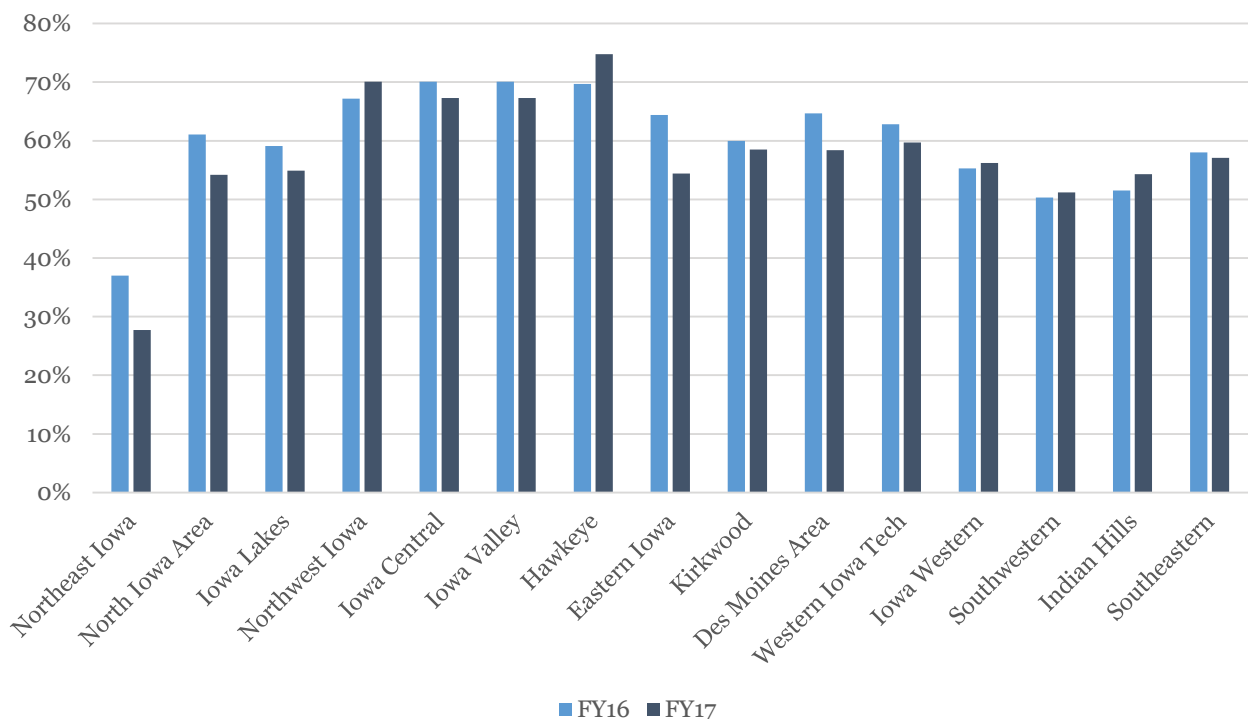


TABLE 6A: AEL PERFORMANCE¹ SUMMARY OF COMPLETERS BY EFL: FY17

Level	Total Number of Participants	Total POP ²	POP with MSG ³	MSG Rate ⁴	FY17 State Targets
ABE Level 1	200	202	65	32.2%	40%
ABE Level 2	652	681	299	43.9%	42%
ABE Level 3	1,500	1,547	645	41.7%	44%
ABE Level 4	3,148	3,258	1,304	40.0%	40%
ABE Level 5	1,019	1,040	613	58.9%	50%
ABE Level 6	316	321	182	56.7%	--
ABE Subtotal	6,835	7,049	3,108	44.1%	--
ESL Level 1	351	358	156	43.6%	47%
ESL Level 2	520	539	265	49.2%	48%
ESL Level 3	1,188	1,225	598	48.8%	48%
ESL Level 4	1,255	1,288	584	45.3%	42%
ESL Level 5	907	945	448	47.4%	45%
ESL Level 6	632	655	180	27.5%	25%
ESL Subtotal	4,853	5,010	2,231	44.5%	--
% of Total	11,688	12,059	5,339	44.3%	

TABLE 6B: AEL PERFORMANCE¹ SUMMARY OF COMPLETERS BY EFL: FY16

Level	Total Number of FY16 Completers	% Completers	FY16 State Targets
ABE Level 1	78	36%	37%
ABE Level 2	361	47%	38%
ABE Level 3	645	38%	45%
ABE Level 4	1,150	36%	35%
ABE Level 5	562	53%	55%
ABE Level 6	268	--	--
ABE Subtotal	3,064	--	--
ESL Level 1	218	54%	47%
ESL Level 2	288	51%	53%
ESL Level 3	616	53%	49%
ESL Level 4	611	46%	39%
ESL Level 5	452	48%	38%
ESL Level 6	204	33%	22%
ESL Subtotal	2,389	--	--
Total	5,453	44%	

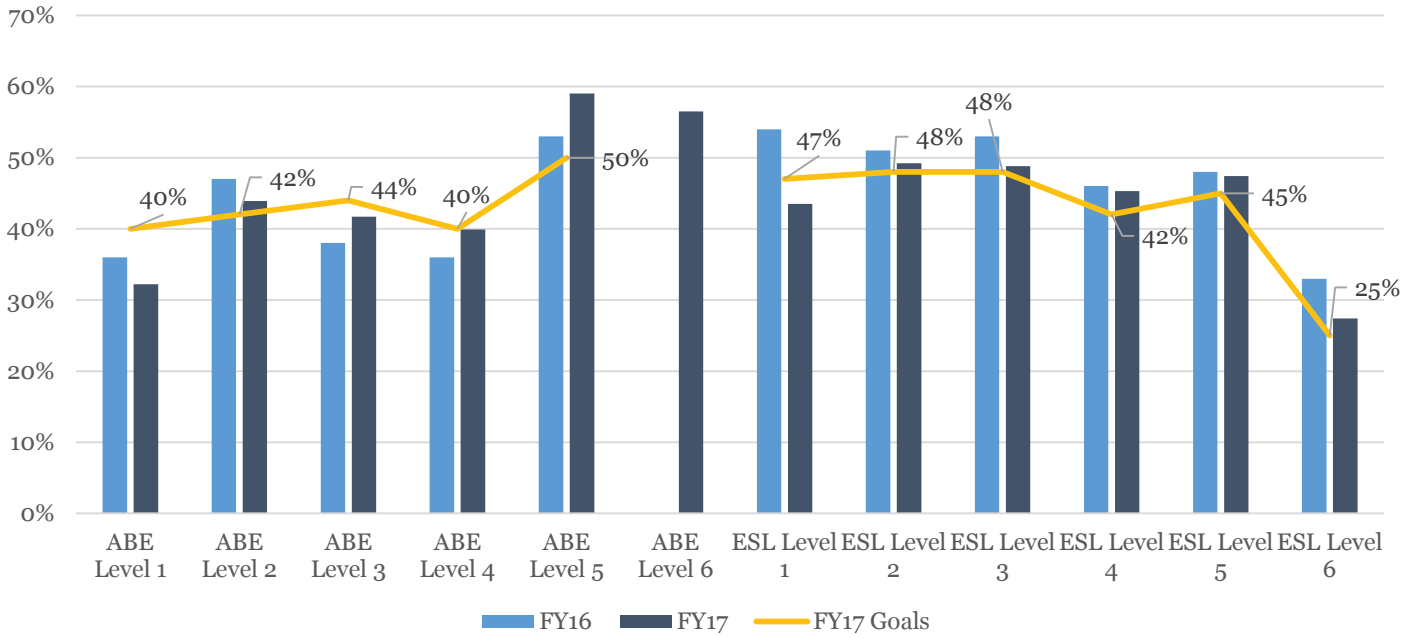
1 Performance compares MSG against federally negotiated targets for the state.

2 Total POP includes total periods of participation.

3 POP with MSG (Period of Participation with Measurable Skill Gain) determines MSG by post-testing and achieving a sufficient score to move to the next EFL.

4 MSG Rate = POP with MSG/Total POP

FIGURE 4: AEL PERFORMANCE SUMMARY BY LEVEL: FY16 AND FY17





COMMUNITY COLLEGES & WORKFORCE PREPARATION

PROSPERITY THROUGH EDUCATION

www.educateiowa.gov/ccpublications

The Division of Community Colleges and Workforce Preparation within the Iowa Department of Education administers a variety of diverse programs that enhance Iowa's educational system and help to prepare a skilled and knowledgeable workforce. Divided between two bureaus — the Bureau of Community Colleges and the Bureau of Career and Technical Education — the Division is committed to providing and supporting opportunities for lifelong learning. In addition to working with Iowa's 15 public community colleges on state accreditation, program approval, equity review, and data reporting, guidance is also provided in the areas of career and technical education, workforce training and economic development, adult education and literacy, military education, the state mandated OWI education program, the GAP Tuition and PACE programs, Senior Year Plus, the National Crosswalk Service Center, and the Statewide Intermediary Network program.