

ADULT EDUCATION AND LITERACY IN IOWA

Fiscal Year
2018
Annual Report



**COMMUNITY COLLEGES &
WORKFORCE PREPARATION**
PROSPERITY THROUGH EDUCATION
www.educateiowa.gov/ccpublications

**IOWA DEPARTMENT
OF EDUCATION**



Grimes State Office Building

Phone: 515-281-8260
Fax: 515-242-5988
www.educateiowa.gov

Ryan Wise
Director, Iowa Department
of Education
515-281-3436
ryan.wise@iowa.gov

Jeremy Varner
Administrator, Division of
Community Colleges and
Workforce Preparation
515-281-8260
jeremy.varner@iowa.gov

Barbara Burrows
Chief, Bureau of
Community Colleges
515-281-0319
barbara.burrows@iowa.gov

Alex Harris
State Director of
Adult Education and Literacy
515-281-3640
alex.harris@iowa.gov

Published:
2018

**State of Iowa
Department of Education**
Grimes State Office Building
400 E. 14th Street
Des Moines, IA 50319-0146

State Board of Education

Brooke Axiotis, Des Moines
Michael Bearden, Gladbrook
Bettie Bolar, Marshalltown
Joshua Byrnes, Osage
Angela English, Dyersville
Michael L. Knedler, Council Bluffs
Mike May, Spirit Lake
Mary Ellen Miller, Wayne County
Kimberly Wayne, Des Moines
Fez Zafar, Student Member, Clive

Administration

Ryan M. Wise, Director and Executive Officer
of the State Board of Education

**Division of Community Colleges
and Workforce Preparation**

Jeremy Varner, Division Administrator

Bureau of Community Colleges

Barbara Burrows, Bureau Chief
Alex Harris, State Director of Adult
Education and Literacy

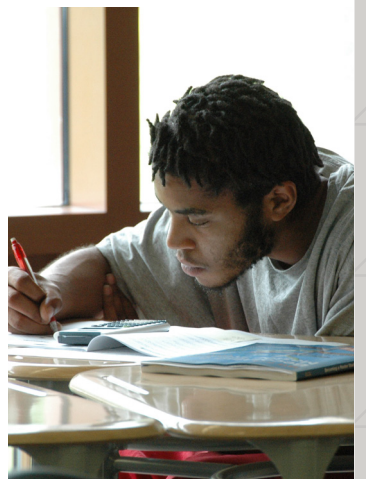
It is the policy of the Iowa Department of Education not to discriminate on the basis of race, creed, color, sexual orientation, gender identity, national origin, sex, disability, religion, age, political party affiliation, or actual or potential parental, family or marital status in its programs, activities, or employment practices as required by the Iowa Code sections 216.9 and 256.10(2), Titles VI and VII of the Civil Rights Act of 1964 (42 U.S.C. § 2000d and 2000e), the Equal Pay Act of 1973 (29 U.S.C. § 206, et seq.), Title IX (Educational Amendments, 20 U.S.C. §§ 1681 – 1688), Section 504 (Rehabilitation Act of 1973, 29 U.S.C. § 794), and the Americans with Disabilities Act (42 U.S.C. § 12101, et seq.). If you have questions or complaints related to compliance with this policy by the Iowa Department of Education, please contact the legal counsel for the Iowa Department of Education, Grimes State Office Building, 400 E. 14th Street, Des Moines, IA 50319-0146, telephone number: 515-281-5295, or the Director of the Office for Civil Rights, U.S. Department of Education, Citigroup Center, 500 W. Madison Street, Suite 1475, Chicago, IL 60661-4544, telephone number: 312-730-1560, FAX number: 312-730-1576, TDD number: 877-521-2172, email: OCR.Chicago@ed.gov.

About the Report

The Department of Education, Division of Community Colleges and Workforce Preparation, has prepared this report in response to the Skilled Iowa and Job Creation Fund legislation related to the state appropriation for Adult Basic Education and Adult Education Literacy (AEL) Programs (260C.50) This report was coordinated by the Department with the assistance of Iowa's 15 community colleges.

Acknowledgments

The staff and administration of the Division of Community Colleges and Workforce Preparation wish to acknowledge and thank the 15 community college presidents and their staffs for their assistance in developing this report. The figures noted in this report were obtained from each of Iowa's 15 community colleges.



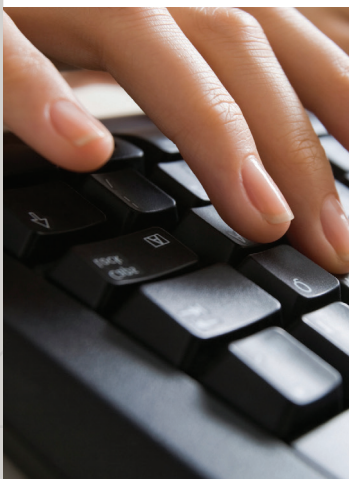


Table of Contents

About the Report	iii
Acknowledgments	iii
Introduction	2
Eligible Costs	3
Program Components	3
Process	3
Methods in Reporting	4
Appendix: Tables and Figures	6
<i>Table 1: AEL Fiscal Summary for All Programs: FY18</i>	6
<i>Table 2A: AEL Program Summary by College: FY18</i>	7
<i>Table 2B: AEL Program Summary by College: FY17</i>	7
<i>Table 3A: AEL Program Expenditures by College, State AEL: FY18</i>	8
<i>Table 3B: AEL Program Expenditures by College, State ESL: FY18</i>	8
<i>Table 3C: AEL Program Expenditures by College, State AEL: FY17</i>	9
<i>Table 3D: AEL Program Expenditures by College, State ESL: FY17</i>	9
<i>Figure 1A: AEL Program Expenditures by Quarter, State AEL: FY18</i>	10
<i>Figure 1B: AEL Program Expenditures by Quarter, State ESL: FY17</i>	10
<i>Table 4A: AEL Program Expenditures by College, Federal AEL: FY18</i>	11
<i>Table 4B: AEL Program Expenditures by College, Federal AEL: FY17</i>	11
<i>Figure 2: AEL Program Expenditures by Quarter, Federal AEL/IELCE: FY18</i> ...	12
<i>Table 5A: AEL Educational Functioning Level (EFL) by College: FY18</i>	13
<i>Table 5B: AEL Educational Functioning Level Gains (EFL) by College: FY17</i> .	13
<i>Figure 3A: AEL Participant Comparison: FY17 and FY18</i>	14
<i>Figure 3B: AEL Post-Test Rate Comparison: FY17 and FY18</i>	14
<i>Table 6A: AEL Performance¹ Summary of Completers by Level: FY18</i>	15
<i>Table 6B: AEL Performance¹ Summary of Completers by Level: FY17</i>	15
<i>Figure 4: AEL Performance Summary by Level: FY17 and FY18</i>	16

Introduction

Adult education has a rich history in Iowa of providing services that assist adults in improving their skills, achieving their educational goals, and transitioning to further education or employment. Instruction is designed for adults functioning at the lowest levels of basic skills and English language instruction to those with advanced levels of learning.

As defined by Title II of the Workforce Innovation and Opportunity Act (WIOA) of 2014, adult education enables adults to: (1) become literate and obtain the knowledge and skills necessary for employment and self-sufficiency; (2) obtain the educational skills necessary to become full partners in the educational development of their children; and (3) complete a secondary school education.

Adult education offers solutions. Adult education's history of responding to learners' needs is addressing the skill gap and economic demands of Iowa's workforce. Whether a learner's goals are related to personal improvement, family literacy, further training, or employment, undereducated adults in Iowa need a system that provides clear pathways and support.



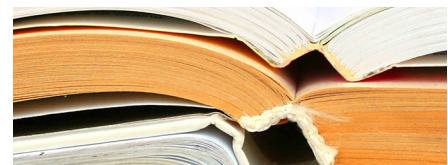
ADDRESSING IOWA'S NEEDS AND CHALLENGES THROUGH ADULT EDUCATION

In FY18, Iowa's adult education and literacy (AEL) programs served 11,247 unique participants, helping them improve their skills, achieve educational goals, and transition to further education or employment.



ADULTS WITHOUT HIGH SCHOOL DIPLOMAS

According to the U.S. Census Bureau's 2017 American Community Survey, 8.3 percent of Iowa's population, age 25 years and over (169,966 people), neither graduated from high school nor earned a high school equivalency diploma. In FY18, a total of 1,602 participants completed all five sub-tests and had data available for matching against HSED recipients. Of those who met the age requirement this year, 1,496 were awarded equivalency diplomas.



THE LIMITED ENGLISH PROFICIENT (LEP) POPULATION

Iowa's LEP population, 5 years of age and over, totaled over 218,229. The American Community Survey's 5-year (2012-2017) estimates indicate, of that population, 93,111 self-identified as "speaks English less than very well". In FY18, Iowa's AEL providers served 4,761 participants enrolled in English as a Second Language programs.

Eligible Costs

Funds received from state funding sources and allocated to adult education and literacy (AEL) providers shall adhere to the allowable use restrictions of the Adult Education and Family Literacy Act, (AEFLA) and subsequent adult education legislation, except for administrative cost restrictions. Exceptions include the allowable use of funds for high school equivalency testing, administration, and associated costs. Only activities directly linked to AEL programs and instruction shall be funded with monies received from state AEL and English as a Second Language (ESL) funds. Since the intent of the state funds was to expand services and improve the quality of AEL and ESL activities, the federal funds serve to supplement services provided to all eligible participants. Consideration should be given to providing activities concurrently with workforce preparation activities and workforce training for the purpose of educational and career advancement.

Program Components

Eligible institutions maintain the ability to provide the following AEL and ESL services as deemed appropriate by the community or needs of the participants.

1. Adult basic education.
2. Programs for adults of limited English proficiency.
3. Adult secondary education, including programs leading to the achievement of a high school equivalency certificate and/or high school diploma.
4. Instructional services provided by qualified instructors to improve student proficiencies necessary to function effectively in adult life, including accessing further education, employment-related training, or employment. Institutions shall effectively use technology, services, and delivery systems, including distance education, in a manner sufficient to increase the amount and quality of student learning and performance.
5. Assessment and guidance services adhering to state's assessment policy.
6. Programs and services stipulated by current and subsequent adult education legislation.

Process

AEL state funds are distributed based upon the state general aid (SGA) formula. However, state funds designated for ESL are jointly distributed by the Department and the community colleges based on need for instruction in the region, as determined by census survey and local outreach efforts.

Federal AEL funds were distributed through a competitive grant process for fiscal years (FY) 2018 through 2020, based on need (85 percent), with the remaining funds (15 percent) allocated initially as an incentive for Integrated Education and Training (IET) activities. In subsequent years, these funds will be allocated based on performance. Eligibility for the awarding of federal funds was

based on demonstrated effectiveness in providing AEL activities as defined by 34 CFR Part 463.23 of the WIOA. A separate competition for Integrated English Literacy and Civics Education (IELCE) under Section §243, averaging an annual allocation of \$230,000, resulted in awards being granted to eight providers.

Due to the federal competition, the carry forward from the previous fiscal year was required to be spent within the first quarter of the new funding cycle and any unused portion reverted to the state for reallocation. Providers spent 61 percent (\$140,615) of their carry forward. The state also provided funds (\$52,600) for targeted technical assistance and professional development, mainly in the area of designing quality IET/IELCE programs. Providers were awarded a 3.6 percent increase in FY18 federal funds.

The competitive process required each provider to submit an application detailing the services and strategies for the funding period. Each application highlighted the local area needs, evidence of past effectiveness, and current planned activities that demonstrate continuous improvement. Emphasis was placed on the criteria of sufficient intensity and duration, with collaborative approaches for providing support services for participants.

Methods in Reporting

For this report, a fiscal year is the 12-month period from July 1 to June 30. To enroll in AEL services, eligible individuals must take a pre-test to measure basic skill levels. Individuals who lack basic English language skills, score under a tenth-grade level in math and/or reading, or lack a high school credential, are eligible for services and counted as eligible individuals for reporting.

To be counted as an AEL participant, eligible individuals must attend instruction for 12 or more hours before being eligible to count for federal reporting.

Total courses include eligible individuals and participants who are enrolled in the community college Management Information System (MIS) and can include more than one AEL course, such as ESL and basic skill development, throughout the course of the year.

Finally, those participants who achieve a measurable skill gain (MSG) are those who persist with hours of instruction, post-test, and make an educational level gain in either math or reading—depending on their instructional goal or focus. MSGs are equivalent to a grade or multiple grade level completion. Under WIOA, a MSG is also counted if a participant completes the requirements for the awarding of a high school equivalency diploma (HSED).

Analysis

This report compares AEL financial allocations, expenditures, and performance within the state and by the providers for FY17 and FY18.

The financial allocations for FY18 included state appropriated funds for AEL, as well as for ESL programs. Programs received an annual state allocation of \$5,140,000 to expand services to eligible individuals. In FY18, Iowa received a portion of the federal allocation by formula totaling \$3,616,753, of which \$3,106,592 was allocated to local providers. In addition to new funds, providers also carried forward \$867,930 in state and federal funds from FY17. Many providers used these funds to expand access to services and improve partnerships with workforce delivery services as part of WIOA.

Of the \$9,114,523 in state and federal funds available to local providers in FY18, 72.5 percent (\$6,612,365) was spent on direct instruction and 8.9 percent (\$815,658) on administrative expenditures by providers. A total of 88.3 percent of the available funds was spent in FY18.

In FY18, Iowa's AEL providers served 11,247 unique participants (i.e., remained in the program longer than 12 hours). In FY17, period of participation (PoP) was introduced by the National Reporting System (NRS) for the purpose of reporting MSGs with participants who exit services and then re-enter within the same program year. According to NRS, "a period of participation begins each time an individual enters adult education and gets at least 12 hours of service," and a period of participation ends when there is "no service or scheduled service for 90 days".¹ Therefore, each participant can have multiple periods of participation in the same year. Of the 11,247 unique participants in FY18 served, there were 11,565 periods of participation reported.

To measure educational gains, AEL providers pre- and post-test participants after a minimum number of instructional hours. Of the 11,247 participants in FY18, 64.6 percent were post-tested. Of those post-tested, 65.7 percent demonstrated an educational functioning level (EFL) gain. In FY18, 1,602 participants completed all five HSED sub-tests and 1,496 were awarded equivalency diplomas. For the 11,565 participants for all periods during the program year reported, there were 5,430 MSGs (i.e., students either made EFL gains or were awarded a HSED).

Core measure reporting for AEL, which typically includes entering and retaining employment and entering postsecondary or transition training, was not available at the time of this report due to lags in reporting wage information and data from the National Student Clearinghouse. This data will be reported in a federal report and captured in the annual publication, *Condition of Iowa's Community Colleges 2018*. The remainder of this report contains tables and figures to illustrate FY18 revenue, expenditures, and participant performance. FY17 data is also provided for comparison purposes.

¹ Defining Key Elements of NRS Report. Retrieved from <https://nrsweb.org/training-ta/f2f-training/accessible/1-understanding-revised-national-reporting-system-adult>.

Appendix: Tables and Figures

TABLE 1: AEL FISCAL SUMMARY FOR ALL PROGRAMS: FY18

State Fiscal Year Budget

Carry Forward from Prior FY ¹	\$637,480
Current Year State Allocation	\$5,140,001
Total Available State Funds (AEL and ESL)	\$5,777,481

State AEL Line Item	Expenses per Quarter				YTD. Expend.
	Q1	Q2	Q3	Q4	
Administrative Expenses	\$137,323	\$127,967	\$123,177	\$177,135	\$565,602
Instructional Expenses	\$540,192	\$748,950	\$718,428	\$1,026,766	\$3,034,336
Professional Development Expenses	\$18,908	\$13,771	\$17,180	\$15,128	\$64,987
HSED Expenses	\$74,618	\$71,573	\$75,658	\$76,786	\$298,635
Total	\$771,040	\$962,261	\$934,444	\$1,295,815	\$3,963,560
Carry Forward to New FY: \$461,102					

State ESL Line Item	Expenses per Quarter				YTD. Expend.
	Q1	Q2	Q3	Q4	
Administrative Expenses	\$17,372	\$16,113	\$15,780	\$11,106	\$60,370
Instructional Expenses	\$245,060	\$337,559	\$372,034	\$283,427	\$1,238,081
Professional Development Expenses	\$775	\$3,759	\$269	\$1,710	\$6,512
Total	\$263,208	\$357,430	\$388,083	\$296,243	\$1,304,963
Carry Forward to New FY: \$47,854					

Federal Fiscal Year Budget

Carry Forward from Prior FY	\$230,450
Current Year State Allocation	\$3,106,592
Total Available Federal Funds (AEL and IELCE)	\$3,337,042

Federal AEL/IELCE Line Item	Expenses per Quarter				YTD. Expend.
	Q1	Q2	Q3	Q4	
Administrative Expenses	\$52,218	\$51,932	\$46,839	\$38,698	\$189,686
AEL Instructional Expenses	\$492,423	\$745,903	\$627,247	\$474,375	\$2,339,948
IELCE Instructional Expenses	\$30,470	\$48,764	\$37,132	\$43,057	\$159,423
Professional Development Expenses	\$24,496	\$19,144	\$13,275	\$33,807	\$90,723
Total	\$599,607	\$865,744	\$724,493	\$589,936	\$2,779,781
Carry Forward to New FY: \$444,010					

¹ Note corrections made in Table 3C resulting in a revised carry forward.

TABLE 2A: AEL PROGRAM SUMMARY BY COLLEGE: FY18

College	Federal Allocation	State Allocation	Total Expenditures ¹	Total Courses ²	Participants ³	Total POP ⁴	Total POP with MSG ⁵	HSED Awards
Northeast Iowa	\$135,835	\$230,392	\$299,161	822	311	321	111	75
North Iowa Area	\$105,772	\$229,196	\$341,821	631	259	259	126	59
Iowa Lakes	\$75,659	\$211,764	\$235,697	291	142	150	57	7
Northwest Iowa	\$100,500	\$127,234	\$232,996	751	187	201	89	3
Iowa Central	\$218,568	\$289,269	\$507,737	2249	1019	1045	605	179
Iowa Valley	\$133,078	\$243,860	\$362,526	1557	478	499	304	52
Hawkeye	\$245,418	\$336,026	\$581,444	3003	783	788	437	44
Eastern Iowa	\$297,576	\$418,090	\$727,822	2381	985	1009	464	175
Kirkwood	\$367,957	\$735,829	\$1,016,603	7875	1684	1730	755	188
Des Moines Area	\$644,763	\$1,037,527	\$1,566,612	8715	2776	2880	1262	463
Western Iowa Tech	\$267,526	\$338,366	\$627,928	1941	878	879	452	77
Iowa Western	\$146,662	\$283,536	\$382,410	2161	557	579	239	123
Southwestern	\$82,453	\$121,118	\$245,936	712	174	175	97	40
Indian Hills	\$137,657	\$340,860	\$509,839	1587	414	432	172	52
Southeastern	\$147,168	\$196,934	\$409,774	2312	600	618	260	65
TOTAL	\$3,106,592	\$5,140,001	\$8,048,304	36,988	11,247	11,565	5,430	1,602

TABLE 2B: AEL PROGRAM SUMMARY BY COLLEGE: FY17

College	Federal Allocation	State Allocation	Total Expenditures ¹	Total Courses ²	Participants ³	Total POP ⁴	Total POP with MSG ⁵	HSED Awards
Northeast Iowa	\$127,918	\$230,476	\$371,027	422	220	239	43	44
North Iowa Area	\$105,727	\$228,748	\$347,687	398	240	253	120	47
Iowa Lakes	\$74,020	\$211,262	\$295,747	111	165	170	56	15
Northwest Iowa	\$84,110	\$125,451	\$211,534	590	201	216	80	4
Iowa Central	\$189,509	\$290,150	\$479,659	2426	1123	1172	681	204
Iowa Valley	\$150,780	\$241,563	\$458,320	1763	563	588	307	65
Hawkeye	\$194,383	\$334,950	\$529,333	2838	737	754	409	47
Eastern Iowa	\$274,274	\$416,719	\$652,577	2892	1098	1125	490	213
Kirkwood	\$287,106	\$730,339	\$1,071,391	6851	1367	1406	568	181
Des Moines Area	\$670,827	\$1,046,189	\$1,711,452	8068	3141	3239	1321	461
Western Iowa Tech	\$277,469	\$338,643	\$559,058	2724	1002	1025	479	89
Iowa Western	\$168,542	\$284,079	\$466,617	2549	653	671	281	151
Southwestern	\$91,153	\$121,354	\$228,732	728	165	166	71	33
Indian Hills	\$149,916	\$342,993	\$478,001	1771	440	450	167	85
Southeastern	\$147,107	\$197,084	\$371,048	2181	573	585	266	79
TOTAL	\$2,992,841	\$5,140,000	\$8,232,183	36,312	11,688	12,059	5,339	1,718

1 Includes carry over funds from previous FY.

2 Based on MIS enrollment; could be co-enrolled.

3 Students enrolled who attended 12+ hours with a pre-test.

4 Period of Participation in this FY.

5 POP with MSG (Period of Participation with Measurable Skill Gains) MSG are determined by post-testing and achieving a sufficient score to move to the next EFL or achieving a HSED award.

TABLE 3A: AEL PROGRAM EXPENDITURES BY COLLEGE, STATE AEL: FY18

College	Administrative	Professional Development	AEL Instruction	HSED Expenses	Total Expenditures	Allocation Remaining
Northeast Iowa	\$52,114	\$658	\$117,424	\$795	\$170,991	\$23,026
North Iowa Area	\$36,534	\$13,888	\$146,897	\$11,692	\$209,012	\$285,907
Iowa Lakes	\$34,220	\$245	\$94,438	\$850	\$129,753	\$50,155
Northwest Iowa	\$17,871	\$0	\$114,000	\$0	\$131,871	\$33,989
Iowa Central	\$28,220	\$0	\$191,406	\$98	\$219,724	\$0
Iowa Valley	\$5,490	\$2,831	\$164,582	\$1,371	\$174,274	\$0
Hawkeye	\$39,277	\$13,760	\$201,504	\$7,306	\$261,846	\$0
Eastern Iowa	\$37,869	\$7,078	\$244,828	\$41,885	\$331,660	\$0
Kirkwood	\$96,768	\$9,984	\$483,283	\$17,095	\$607,129	\$0
Des Moines Area	\$27,587	\$0	\$515,152	\$107,017	\$649,756	\$0
Western Iowa Tech	\$9,884	\$1,412	\$201,045	\$16,669	\$229,009	\$1,409
Iowa Western	\$33,973	\$789	\$155,523	\$29,675	\$219,960	\$15,792
Southwestern	\$13,532	\$3,025	\$93,159	\$9,909	\$119,625	\$36,007
Indian Hills	\$107,717	\$4,882	\$148,029	\$51,949	\$312,578	\$0
Southeastern	\$24,547	\$6,435	\$163,066	\$2,326	\$196,374	\$14,817
Total	\$565,602	\$64,987	\$3,034,336	\$298,635	\$3,963,560	\$461,102
% of Total	14.3%	1.6%	76.6%	7.5%	100.0%	

TABLE 3B: AEL PROGRAM EXPENDITURES BY COLLEGE, STATE ESL: FY18

College	Administrative	Professional Development	AEL Instruction	Total Expenditures	Allocation Remaining
Northeast Iowa	\$23,715	\$0	\$15,103	\$38,818	\$0
North Iowa Area	\$0	\$0	\$34,820	\$34,820	\$0
Iowa Lakes	\$0	\$0	\$31,856	\$31,856	\$0
Northwest Iowa	\$5,810	\$0	\$30,989	\$36,799	\$7,169
Iowa Central	\$0	\$0	\$69,545	\$69,545	\$0
Iowa Valley	\$0	\$0	\$71,432	\$71,432	\$0
Hawkeye	\$4,638	\$0	\$69,542	\$74,180	\$0
Eastern Iowa	\$0	\$1,964	\$84,466	\$86,430	\$0
Kirkwood	\$0	\$53	\$128,647	\$128,700	\$0
Des Moines Area	\$17,711	\$1,859	\$368,199	\$387,770	\$0
Western Iowa Tech	\$429	\$0	\$134,227	\$134,656	\$17,323
Iowa Western	\$0	\$0	\$45,113	\$45,113	\$4,628
Southwestern	\$0	\$0	\$33,644	\$33,644	\$12,944
Indian Hills	\$2,076	\$0	\$56,857	\$58,933	\$0
Southeastern	\$5,990	\$2,636	\$63,640	\$72,266	\$5,791
Total	\$60,370	\$6,512	\$1,238,081	\$1,304,963	\$47,854
% of Total	4.6%	0.5%	94.9%	100.0%	

TABLE 3C: AEL PROGRAM EXPENDITURES BY COLLEGE, STATE AEL: FY17

College	Administrative	Professional Development	AEL Instruction	HSED Expenses	Total Expenditures	Allocation Remaining
Northeast Iowa ¹	\$29,356	\$0	\$175,124	\$0	\$204,481	\$2,443
North Iowa Area	\$34,086	\$16,060	\$138,699	\$10,489	\$199,334	\$300,542
Iowa Lakes	\$79,170	\$5,475	\$109,310	\$734	\$194,689	\$0
Northwest Iowa ¹	\$3,525	\$0	\$49,135	\$0	\$52,660	\$77,362
Iowa Central	\$34,633	\$1,572	\$183,407	\$113	\$219,724	\$0
Iowa Valley ²	\$5,475	\$0	\$192,393	\$5,645	\$203,513	\$1,846
Hawkeye	\$92,161	\$12,773	\$141,038	\$15,873	\$261,846	\$0
Eastern Iowa	\$16,263	\$16,365	\$275,426	\$23,605	\$331,660	\$0
Kirkwood	\$75,824	\$9,036	\$501,993	\$20,276	\$607,129	\$0
Des Moines Area	\$17,807	\$7,053	\$482,808	\$142,088	\$649,756	\$0
Western Iowa Tech	\$1,491	\$1,206	\$180,357	\$17,284	\$200,338	\$15,040
Iowa Western	\$45,678	\$2,444	\$163,044	\$20,673	\$231,838	\$1,957
Southwestern	\$13,532	\$1,075	\$75,367	\$9,607	\$99,581	\$65,422
Indian Hills	\$65,239	\$3,025	\$141,679	\$61,070	\$271,014	\$29,504
Southeastern	\$24,547	\$5,737	\$153,828	\$0	\$184,112	\$47,547
Total	\$538,787	\$81,821	\$2,963,608	\$327,457	\$3,911,675	\$541,663
% of Total	13.8%	2.1%	75.8%	8.4%	100.0%	

¹ Updates to reported values for AEL Instruction and Total Expenditure resulted in a revised Allocation Remaining.

TABLE 3D: AEL PROGRAM EXPENDITURES BY COLLEGE, STATE ESL: FY17

College	Administrative	Professional Development	AEL Instruction	Total Expenditures	Allocation Remaining
Northeast Iowa	\$23,249	\$0	\$15,653	\$38,902	\$0
North Iowa Area	\$0	\$1,230	\$39,463	\$40,693	\$0
Iowa Lakes	\$0	\$88	\$31,266	\$31,354	\$0
Northwest Iowa ¹	\$5,543	\$0	\$32,604	\$38,147	\$5,232
Iowa Central	\$0	\$0	\$70,426	\$70,426	\$0
Iowa Valley	\$0	\$0	\$106,179	\$106,179	\$0
Hawkeye	\$18,893	\$0	\$54,211	\$73,104	\$0
Eastern Iowa	\$0	\$775	\$84,284	\$85,059	\$0
Kirkwood	\$417	\$1,239	\$121,555	\$123,211	\$0
Des Moines Area	\$11,303	\$8,876	\$376,254	\$396,433	\$0
Western Iowa Tech	\$2,357	\$0	\$91,917	\$94,274	\$28,991
Iowa Western	\$0	\$0	\$50,284	\$50,284	\$0
Southwestern	\$0	\$724	\$42,224	\$42,948	\$15,680
Indian Hills	\$2,428	\$0	\$56,345	\$58,773	\$1,147
Southeastern	\$3,441	\$0	\$11,466	\$14,907	\$44,767
Total	\$67,631	\$12,932	\$1,184,131	\$1,264,694	\$95,817
% of Total	5.3%	1.0%	93.6%	100.0%	

FIGURE 1A: AEL PROGRAM EXPENDITURES BY QUARTER, STATE AEL: FY18

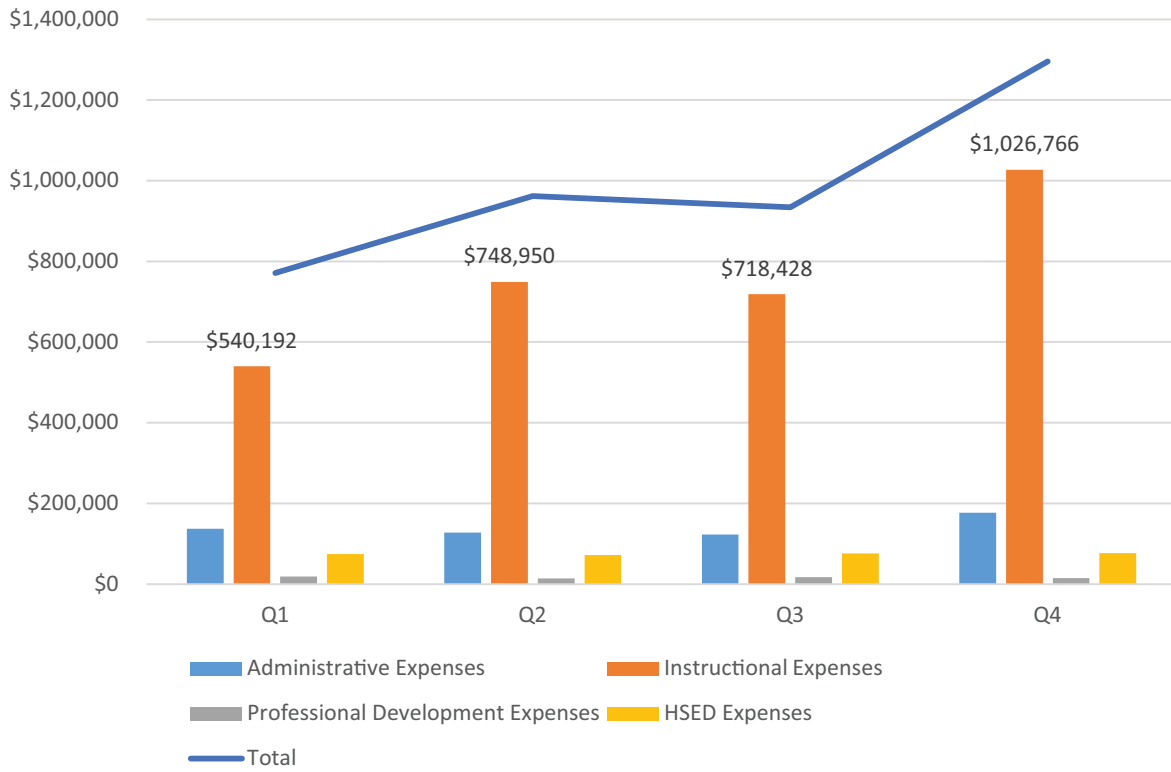


FIGURE 1B: AEL PROGRAM EXPENDITURES BY QUARTER, STATE ESL: FY17

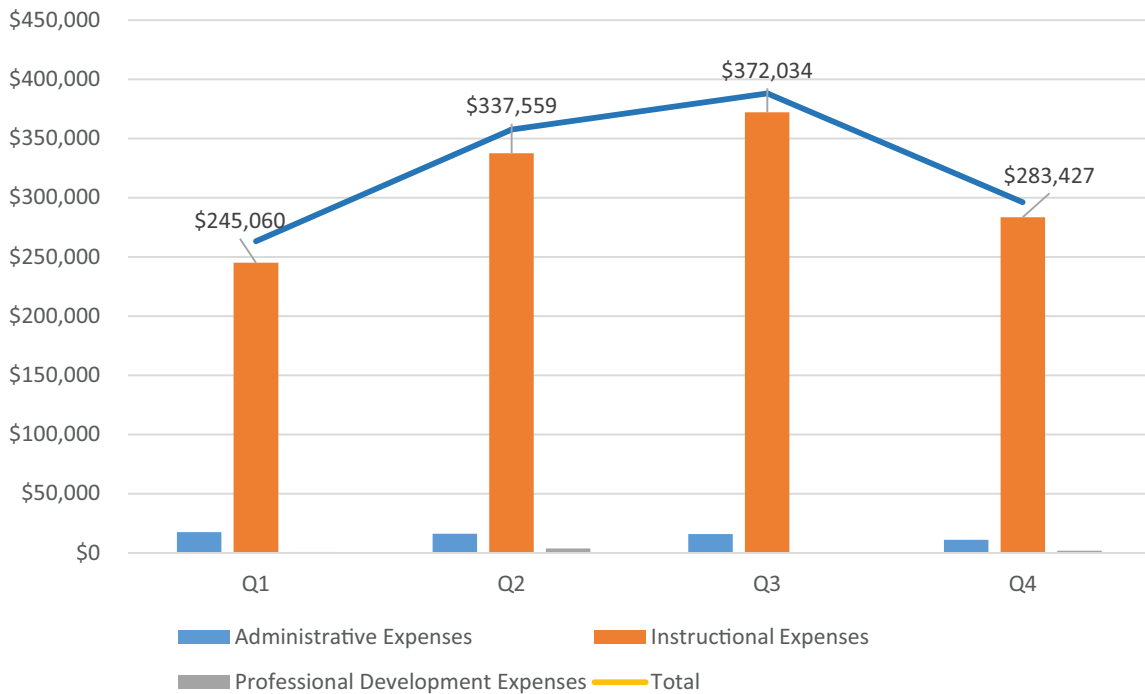


TABLE 4A: AEL PROGRAM EXPENDITURES BY COLLEGE, FEDERAL AEL: FY18

College	Administrative	Professional Development	AEL Instruction	IELCE Expenses	Total Expenditures	Allocation Remaining
Northeast Iowa	\$11,502	\$2,300	\$75,550	\$0	\$89,351	\$46,484
North Iowa Area	\$12,603	\$3,546	\$81,840	\$0	\$97,990	\$7,782
Iowa Lakes	\$3,565	\$1,470	\$59,430	\$9,623	\$74,088	\$9,529
Northwest Iowa ¹	\$7,450	\$6,316	\$50,558	\$2	\$64,326	\$16,210
Iowa Central	\$9,312	\$7,224	\$187,682	\$14,250	\$218,468	\$100
Iowa Valley ²	\$0	\$3,429	\$113,391	\$0	\$116,820	\$16,259
Hawkeye	\$16,771	\$4,400	\$186,247	\$38,000	\$245,418	\$0
Eastern Iowa	\$38,885	\$6,040	\$237,957	\$26,850	\$309,732	\$23,202
Kirkwood	\$8,366	\$6,931	\$227,330	\$38,147	\$280,774	\$151,222
Des Moines Area	\$19,859	\$2,619	\$502,555	\$4,052	\$529,086	\$115,677
Western Iowa Tech	\$13,376	\$1,796	\$234,841	\$14,250	\$264,263	\$13,855
Iowa Western	\$17,355	\$16,662	\$83,320	\$0	\$117,337	\$29,325
Southwestern	\$9,896	\$16,107	\$66,663	\$0	\$92,667	\$992
Indian Hills	\$6,590	\$5,355	\$112,134	\$14,250	\$138,329	\$1,030
Southeastern	\$14,157	\$6,529	\$120,449	\$0	\$141,134	\$12,343
Total	\$189,686	\$90,723	\$2,339,948	\$159,423	\$2,779,781	\$444,010
% of Total	6.8%	3.3%	84.2%	5.7%	100.0%	

TABLE 4B: AEL PROGRAM EXPENDITURES BY COLLEGE, FEDERAL AEL: FY17

College	Administrative	Professional Development	AEL Instruction	EL/Civics Instruction	Total Expenditures	Allocation Remaining
Northeast Iowa	\$6,973	\$2,229	\$113,142	\$5,300	\$127,644	\$3,396
North Iowa Area	\$4,748	\$2,519	\$95,720	\$4,674	\$107,661	\$1,594
Iowa Lakes	\$3,563	\$2,367	\$61,360	\$2,415	\$69,704	\$7,958
Northwest Iowa ¹	\$12,172	\$1,415	\$99,284	\$7,856	\$120,727	\$3,451
Iowa Central	\$9,463	\$4,921	\$160,755	\$14,370	\$189,509	\$0
Iowa Valley ²	\$0	\$1,755	\$133,365	\$13,508	\$148,628	\$2,152
Hawkeye	\$9,719	\$4,876	\$164,591	\$15,197	\$194,383	\$0
Eastern Iowa	\$33,091	\$3,701	\$184,307	\$14,759	\$235,858	\$93,237
Kirkwood	\$16,593	\$7,580	\$278,814	\$38,065	\$341,052	\$66,087
Des Moines Area	\$28,771	\$7,022	\$555,739	\$73,730	\$665,263	\$9,606
Western Iowa Tech	\$13,838	\$2,852	\$220,081	\$27,674	\$264,446	\$13,466
Iowa Western	\$22,817	\$2,490	\$150,987	\$8,201	\$184,495	\$1,756
Southwestern	\$14,553	\$1,205	\$66,311	\$4,134	\$86,203	\$11,206
Indian Hills	\$7,496	\$2,058	\$103,738	\$34,922	\$148,214	\$1,702
Southeastern	\$13,407	\$107	\$153,448	\$5,068	\$172,030	\$14,838
Total	\$197,203	\$47,098	\$2,541,642	\$269,873	\$3,055,817	\$230,450
% of Total	6.5%	1.5%	83.2%	8.8%	100.0%	

FIGURE 2: AEL PROGRAM EXPENDITURES BY QUARTER, FEDERAL AEL/IELCE: FY18

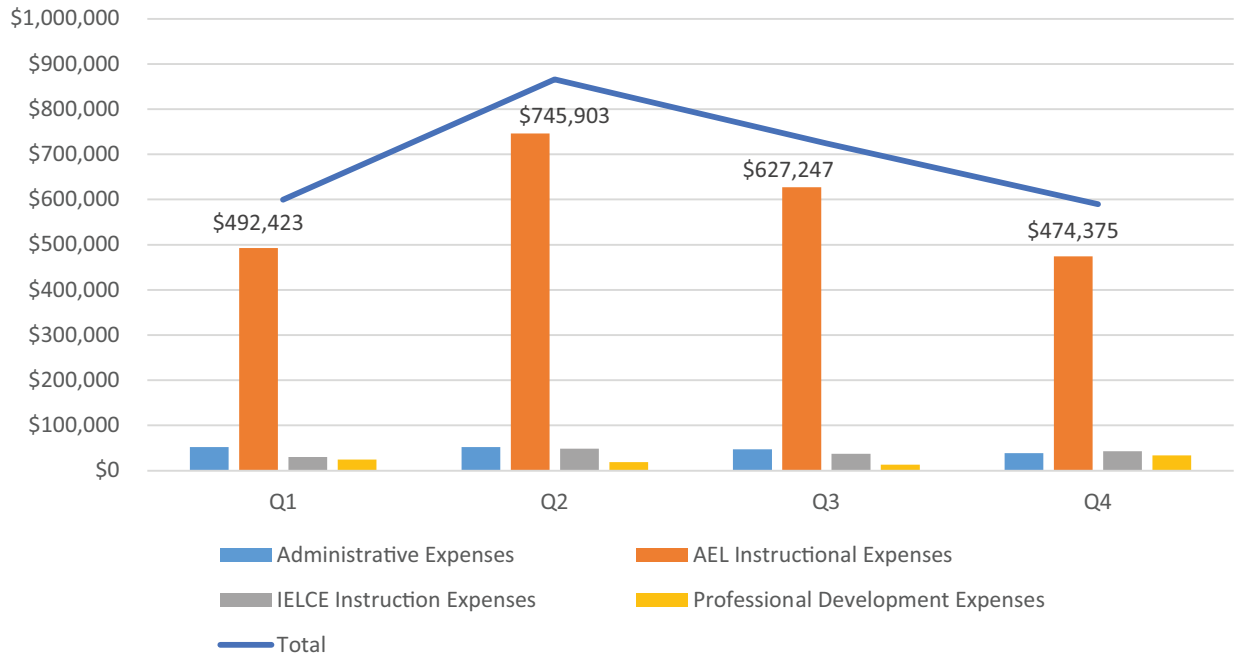


TABLE 5A: AEL EDUCATIONAL FUNCTIONING LEVEL (EFL)¹ BY COLLEGE: FY18

College	Adult Basic Education ²	Adult Secondary Education ³	English as Second Language ⁴	Participants (total initial participation)	Participant Rate ⁵	Total Post-Tested ⁶	Post-Test Rate ⁷	Percent of POP with MSG
Northeast Iowa	182	45	84	311	65.8%	141	47.2%	36.6%
North Iowa Area	171	30	58	259	71.3%	152	59.8%	48.7%
Iowa Lakes	73	14	55	142	63.7%	90	63.4%	38.0%
Northwest Iowa	49	13	125	187	64.5%	138	74.2%	44.3%
Iowa Central	537	122	360	1,019	86.1%	753	77.0%	57.9%
Iowa Valley	139	40	299	478	83.9%	384	81.9%	60.9%
Hawkeye	172	64	547	783	71.4%	598	77.4%	55.5%
Eastern Iowa	611	107	267	985	73.6%	618	64.3%	46.0%
Kirkwood	794	205	685	1,684	60.6%	1,032	63.0%	43.6%
Des Moines Area	1,233	157	1,386	2,776	74.7%	1,588	58.0%	43.8%
Western Iowa Tech	278	71	529	878	73.5%	576	66.7%	51.4%
Iowa Western	352	106	99	557	75.8%	296	56.2%	41.3%
Southwestern	96	37	41	174	54.5%	114	68.3%	55.4%
Indian Hills	177	46	191	414	68.8%	264	65.0%	39.8%
Southeastern	441	124	35	600	75.0%	338	59.3%	42.1%
Total	5,305	1,181	4,761	11,247	71.7%	7,082	64.6%	46.9%
% of Total	47.2%	10.5%	42.3%	100.0%	-	-	-	-

TABLE 5B: AEL EDUCATIONAL FUNCTIONING LEVEL GAINS (EFL)¹ BY COLLEGE: FY17

College	Adult Basic Education ²	Adult Secondary Education ³	English as Second Language ⁴	Participants (total initial participation)	Participant Rate ⁵	Total Post-Tested ⁶	Post-Test Rate ⁷	EFL ¹ (in the first Period of Participation)
Northeast Iowa	137	33	50	220	83.70%	62	29.7%	18
North Iowa Area	138	44	58	240	76.20%	130	56.0%	70
Iowa Lakes	61	26	77	164	67.50%	91	56.5%	46
Northwest Iowa	71	11	119	201	70.50%	141	70.5%	73
Iowa Central	621	156	346	1,123	85.50%	755	71.5%	457
Iowa Valley	154	46	363	563	80.00%	378	68.5%	232
Hawkeye	169	81	487	737	72.70%	551	75.8%	356
Eastern Iowa	657	148	293	1,098	74.60%	594	55.5%	308
Kirkwood	663	192	512	1,367	53.60%	797	59.6%	418
Des Moines Area	1,395	229	1,517	3,141	74.70%	1,813	58.5%	964
Western Iowa Tech	271	61	670	1,002	74.50%	594	60.2%	381
Iowa Western	443	112	98	653	75.20%	354	57.3%	187
Southwestern	80	36	50	166	49.10%	83	55.3%	36
Indian Hills	203	51	186	440	69.70%	238	55.1%	99
Southeastern	437	109	27	573	64.40%	319	58.9%	184
Total	5,500	1,335	4,853	11,688	71.1%	6,900	60.7%	3,829
% of Total	47.1%	11.4%	41.5%	100.0%	-	-	-	-

1 Participants with at least 40+ hours of instruction and post-test with a gain, sufficient to transition to the next level of instruction (reflected as a one to two grade-level equivalency gain).
 2 Includes grade levels 00-08.
 3 Includes grade levels 09-12.

4 ESL (English as a Second Language)—Includes grade levels 00-08.
 5 Eligible Individuals divided by those who are enrolled as participants (attended 12+ hours).
 6 Excludes ABE Level 6.
 7 Number post-tested divided by total who achieved an EFL.

FIGURE 3A: AEL PARTICIPANT COMPARISON: FY17 AND FY18

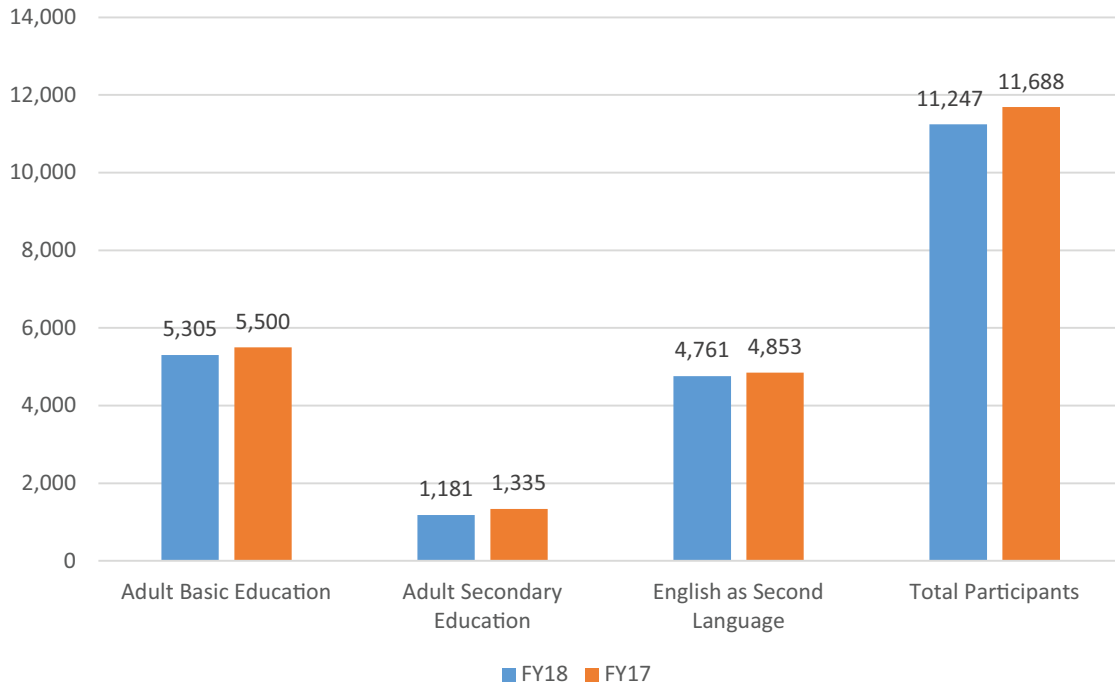


FIGURE 3B: AEL POST-TEST RATE COMPARISON: FY17 AND FY18

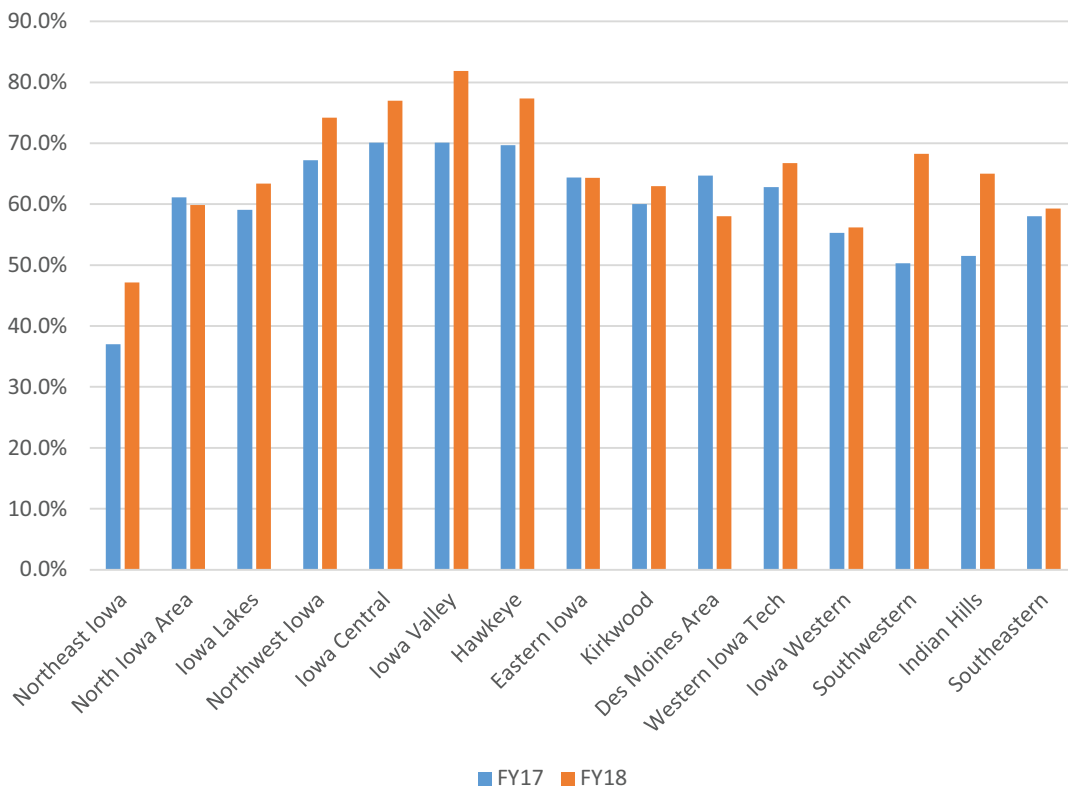


TABLE 6A: AEL PERFORMANCE¹ SUMMARY OF COMPLETERS BY LEVEL: FY18

Level	Total Number of Participants	Total POP ²	POP with MSG ³	MSG Rate ⁴	FY18 State Targets
ABE Level 1	184	191	83	43%	41%
ABE Level 2	635	653	287	44%	43%
ABE Level 3	1,443	1,491	652	44%	44%
ABE Level 4	3,043	3,146	1,308	42%	41%
ABE Level 5	904	921	554	60%	51%
ABE Level 6	277	281	173	62%	--
ABE Subtotal	6,486	6,683	3,057	46%	--
ESL Level 1	337	344	187	54%	48%
ESL Level 2	580	592	306	52%	49%
ESL Level 3	1,204	1,226	664	54%	49%
ESL Level 4	1,256	1,295	607	47%	43%
ESL Level 5	862	882	432	49%	46%
ESL Level 6	522	543	177	33%	26%
ESL Subtotal	4,761	4,882	2,373	49%	--
Total	11,247	11,565	5,430	47%	

TABLE 6B: AEL PERFORMANCE¹ SUMMARY OF COMPLETERS BY LEVEL: FY17

Level	Total Number of Participants	Total POP ²	POP with MSG ³	MSG Rate ⁴	FY18 State Targets
ABE Level 1	200	202	65	32.2%	40%
ABE Level 2	652	681	299	43.9%	42%
ABE Level 3	1,500	1,547	645	41.7%	44%
ABE Level 4	3,148	3,258	1,304	40.0%	40%
ABE Level 5	1,019	1,040	613	58.9%	50%
ABE Level 6	316	321	182	56.7%	--
ABE Subtotal	6,835	7,049	3,108	44.1%	--
ESL Level 1	351	358	156	43.6%	47%
ESL Level 2	520	539	265	49.2%	48%
ESL Level 3	1,188	1,225	598	48.8%	48%
ESL Level 4	1,255	1,288	584	45.3%	42%
ESL Level 5	907	945	448	47.4%	45%
ESL Level 6	632	655	180	27.5%	25%
ESL Subtotal	4,853	5,010	2,231	44.5%	--
Total	11,688	12,059	5,339	44.3%	

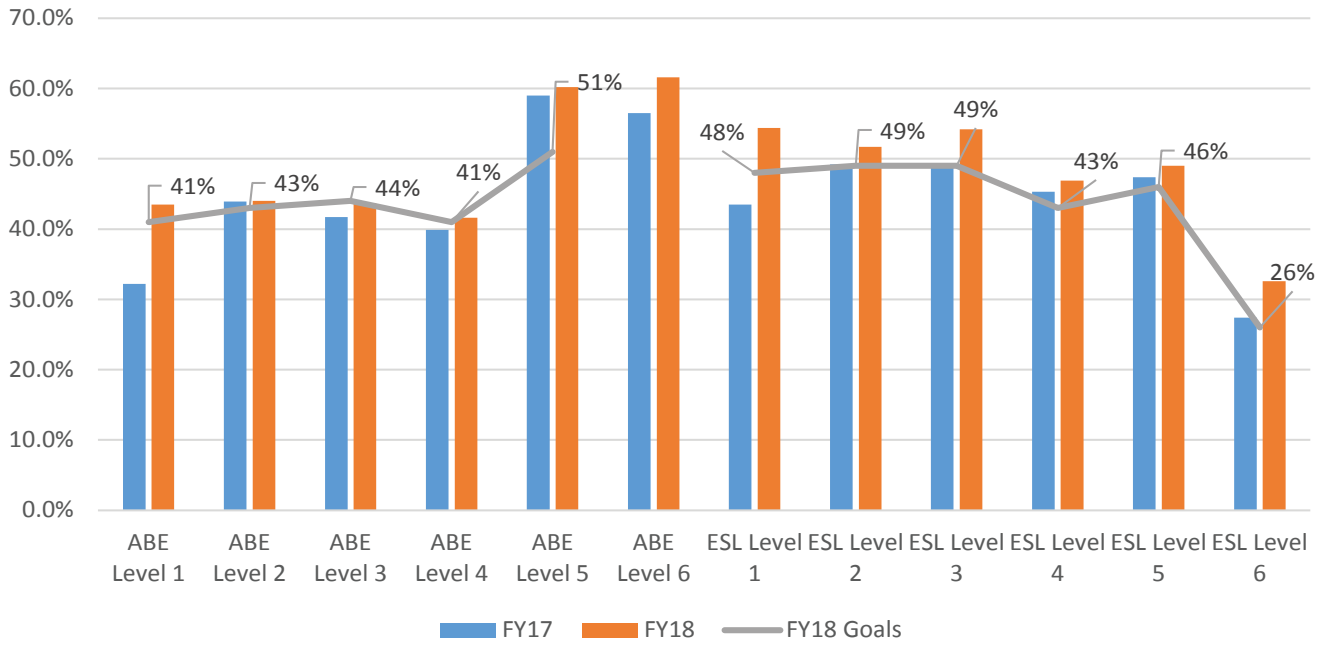
1 Performance compares MSG against federally negotiated targets for the state.

2 Total POP includes total periods of participation.

3 POP with MSG (Period of Participation with Measurable Skill Gain) determines MSG by post-testing and achieving a sufficient score to move to the next EFL.

4 MSG Rate = POP with MSG/Total POP

FIGURE 4: AEL PERFORMANCE SUMMARY BY LEVEL: FY17 AND FY18





COMMUNITY COLLEGES & WORKFORCE PREPARATION

PROSPERITY THROUGH EDUCATION

www.educateiowa.gov/ccpublications

The Division of Community Colleges and Workforce Preparation within the Iowa Department of Education administers a variety of diverse programs that enhance Iowa's educational system and help to prepare a skilled and knowledgeable workforce. Divided between two bureaus — the Bureau of Community Colleges and the Bureau of Career and Technical Education — the Division is committed to providing and supporting opportunities for lifelong learning. In addition to working with Iowa's 15 public community colleges on state accreditation, program approval, equity review, and data reporting, guidance is also provided in the areas of career and technical education, workforce training and economic development, adult education and literacy, military education, the state mandated OWI education program, the GAP Tuition and PACE programs, Senior Year Plus, the National Crosswalk Service Center, and the Statewide Intermediary Network program.