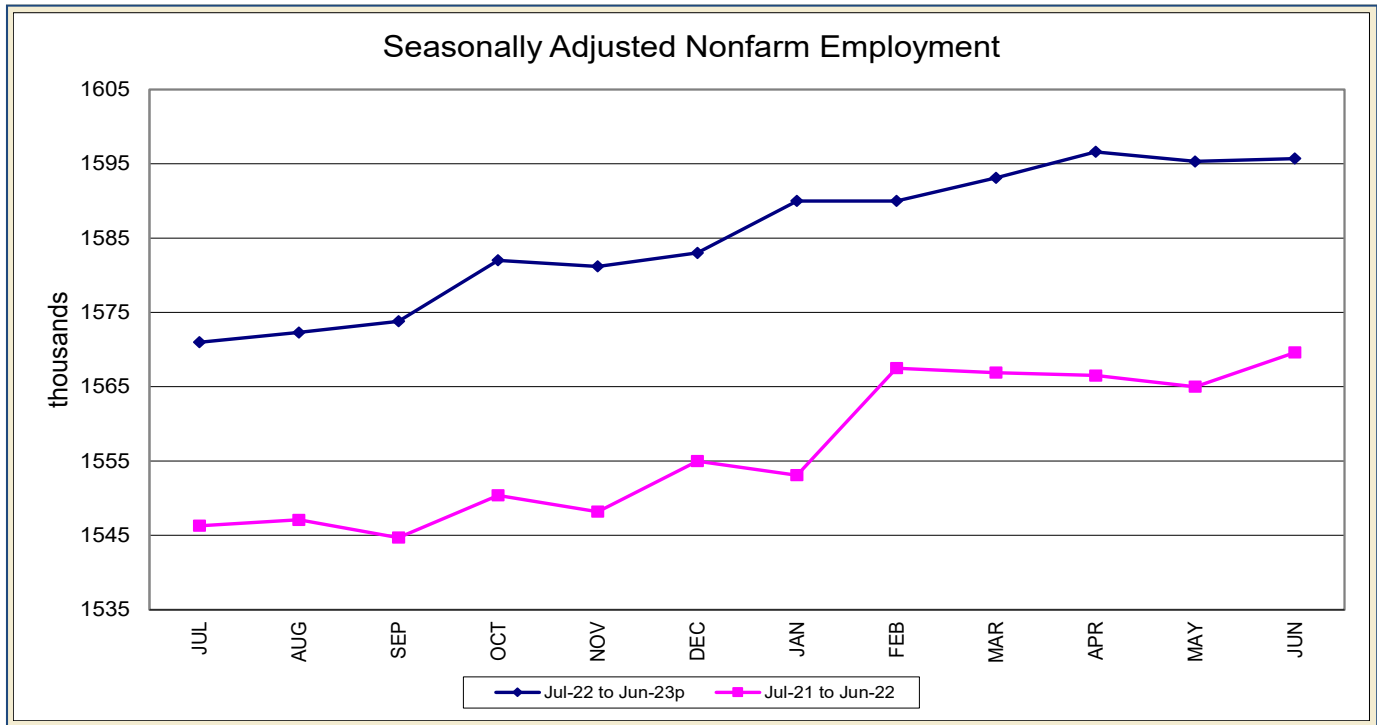


IOWA NONFARM EMPLOYMENT

IOWA WORKFORCE DEVELOPMENT

June 2023

Small Statewide Employment Gains Seen as Construction Employment Recedes



Iowa establishments gained 400 jobs in June, lifting total nonfarm employment to 1,595,700 jobs. This is the fourth increase in 2023 and follows a loss of 1,300 jobs in May. Job gains in leisure and hospitality and education and health care more than offset a disappointing June for the construction industry which shed jobs for the second consecutive month. Goods producing sectors combined shed 3,600 jobs since April, but private services have countered with 2,500 jobs added. Government added 100 jobs since May and is now up 3,700 jobs versus last year while total nonfarm employment has advanced by 26,100.

Arts, entertainment, and recreation industries added the most jobs in June, gaining 3,200 jobs. This is the fourth consecutive increase for this industry which was partially fueled by hiring at amusement, gambling,

and recreation establishments. Education and health care establishments added 1,000 jobs and were generally driven by health care and social assistance firms hiring. This is now the fourth consecutive gain for this supersector which is up 3,800 jobs since February. On the other hand, construction shed the most jobs in June (-1,700) and has reflected some weakness this year with 3,800 jobs pared since January. Professional and business services lost 1,400 jobs and was led by losses in administrative support and waste management. Financial activities posted the only other major loss (-500). This sector has trended down over the past three months with 1,100 jobs shed since March.

Annually, education and health care has added the most jobs (+12,000). Slightly over half of the jobs added

were in health care and social assistance. Leisure and hospitality is now up 9,400 jobs following a large increase in recreational industries in June. While most sectors have advanced, there are a few sectors paring jobs over the past twelve months and were led by administrative support and waste management (-4,900) and transportation and warehousing (-3,300).

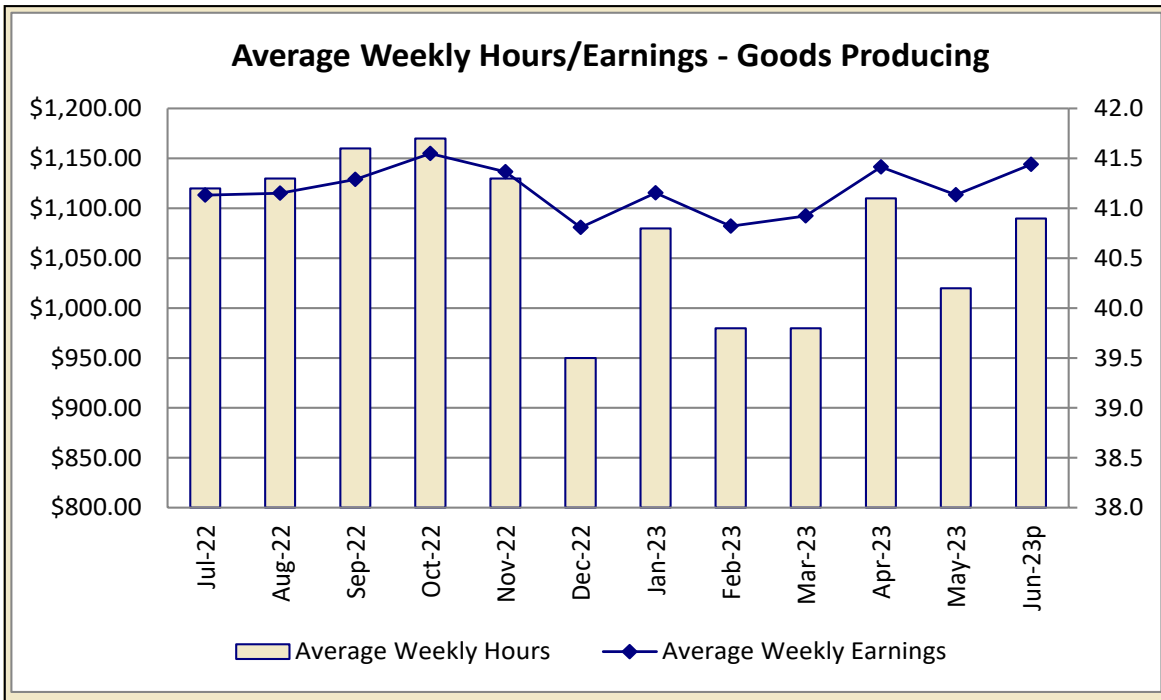
Nationally, total nonfarm employment added 209,000 jobs in June. The largest gains were in government (+60,000), health care and social assistance (+41,000), and social assistance (+24,000).

IOWA NONFARM EMPLOYMENT

IOWA WORKFORCE DEVELOPMENT

June 2023

IOWA'S HOURS & EARNINGS

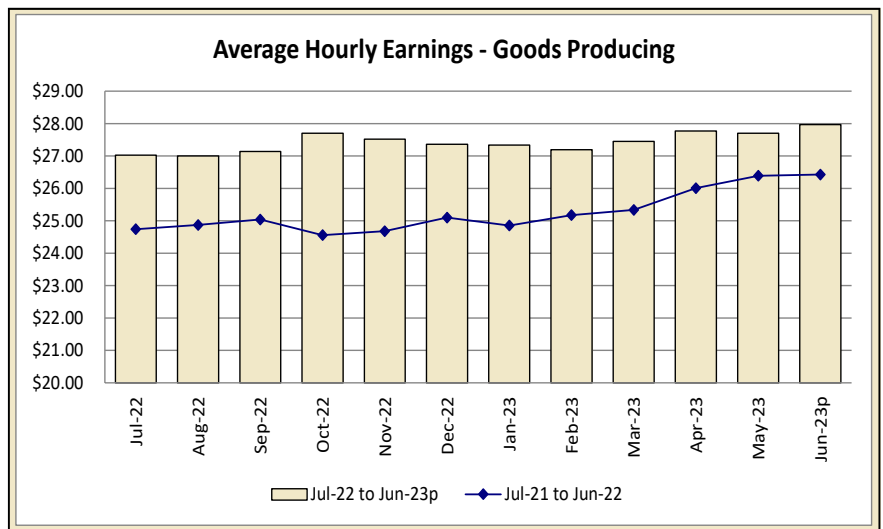


Production workers in Iowa's goods-producing sectors earned \$1,143.97 in June, up \$55.05 compared to one year ago. The annual gain was largely due to gains in hourly earnings, particularly in construction which added \$2.12 per hour on average. Construction workers averaged \$1,357.79 per week in June, up \$129.34 compared to 2022. Manufacturing production workers averaged \$991.45, up \$36.39 versus last year.

Within service sectors, retail trade workers averaged \$516.79 in June, up \$34.39 versus one year ago. Finance activities workers have had their average weekly earnings contracted slightly (-\$5.20) and workers averaged \$1,108.85 per week.

| Goods-producing Hours & Earnings | |
|----------------------------------|------------|
| Average Weekly Earnings | \$1,143.97 |
| Average Hourly Earnings | \$27.97 |
| Average Weekly Hours | 40.9 |

For additional information,
contact James Morris (515-281-8515)



IOWA NONFARM EMPLOYMENT

IOWA WORKFORCE DEVELOPMENT

June 2023

METROPOLITAN STATISTICAL AREAS

SEASONALLY ADJUSTED NONFARM EMPLOYMENT (TOTAL NONFARM)

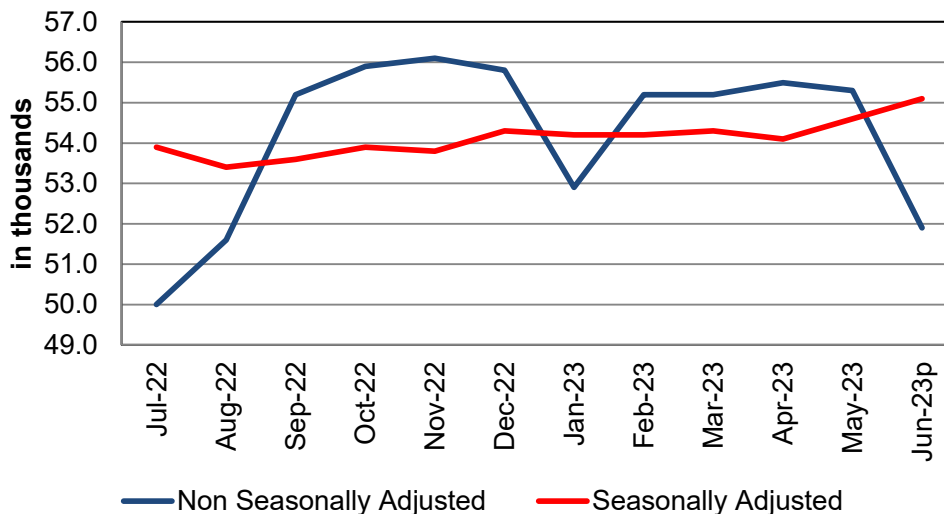
| MSA | Jun-22 | Jul-22 | Aug-22 | Sep-22 | Oct-22 | Nov-22 | Dec-22 | Jan-23 | Feb-23 | Mar-23 | Apr-23 | May-23 | Jun-23p |
|------------------------|--------|--------|--------|--------|--------|--------|--------|--------|--------|--------|--------|--------|---------|
| AMES | 53.8 | 53.9 | 53.4 | 53.6 | 53.9 | 53.8 | 54.3 | 54.2 | 54.2 | 54.3 | 54.1 | 54.6 | 55.1 |
| CEDAR RAPIDS | 142.1 | 142.6 | 142.7 | 142.5 | 142.5 | 142.3 | 142.8 | 143.6 | 144.6 | 144.4 | 144.7 | 143.4 | 143.0 |
| DES MOINES/W. DES MOIN | 383.5 | 384.4 | 385.0 | 387.0 | 389.4 | 388.4 | 390.8 | 393.0 | 391.9 | 391.9 | 391.3 | 391.9 | 390.0 |
| DUBUQUE | 60.1 | 60.0 | 60.5 | 60.7 | 60.7 | 60.5 | 60.8 | 61.0 | 60.8 | 60.5 | 60.4 | 60.5 | 60.5 |
| IOWA CITY | 99.4 | 99.6 | 99.9 | 100.2 | 100.9 | 100.8 | 100.5 | 101.0 | 101.3 | 101.2 | 101.0 | 101.3 | 100.9 |
| SIOUX CITY | 88.2 | 88.3 | 88.4 | 88.6 | 89.1 | 89.4 | 89.4 | 90.0 | 89.8 | 90.1 | 90.4 | 89.7 | 89.0 |
| WATERLOO/CEDAR FALLS | 88.7 | 88.5 | 88.6 | 88.2 | 88.5 | 89.0 | 89.3 | 89.6 | 89.7 | 89.6 | 89.5 | 89.7 | 89.3 |

| Ames Metropolitan Statistical Area | | | | | | | |
|--|--|--------------------|--|------------------|--|--------|--|
| Total Nonfarm 2023 (prelim) | | Total Nonfarm 2022 | | % Change—1 Year | | | |
| 51,900 | | 50,500 | | 2.77% | | | |
| Noteworthy Expanding & Contracting Industries (1 year) | | | | | | | |
| State government | | 6.03% | | Local government | | -1.79% | |

Employment in the Ames metropolitan statistical area (MSA) shrank by 3,400 between May and June, a decrease of 6.1 percent month-to-month. This contraction in employment is typical for this time of year, as activity slows at the MSA’s state university. Correspondingly, state government employment fell by 3,200 positions, while employment in the private service-providing sector declined by 400 positions. Meanwhile, employment in the goods-producing and local government sectors both increased by 100 positions. Federal government employment was unchanged.

Employment in the MSA expanded by 1,400 positions year-over-year, an increase of 2.8 percent. This increase in employment was present in various sectors of the MSA’s economy. State government employment posted the largest nominal and percentage gain, rising by 700 positions. Private service-providing and goods-producing employment grew by 600 and 200 positions, respectively. On the opposite side of the spectrum, local and municipal governments trimmed 100 positions from their payrolls. Employment in the federal government sector was stable.

Ames - Nonfarm Employment



For additional information, contact Daniel Edwards (515-281-7547)

IOWA NONFARM EMPLOYMENT

IOWA WORKFORCE DEVELOPMENT

June 2023

| Cedar Rapids Metropolitan Statistical Area | | | |
|--|--------------------|----------------------|--------|
| Total Nonfarm 2023 (prelim) | Total Nonfarm 2022 | % Change—1 Year | |
| 144,300 | 143,600 | 0.49% | |
| Noteworthy Expanding & Contracting Industries (1 year) | | | |
| Educ & health services | 6.83% | Financial activities | -2.78% |

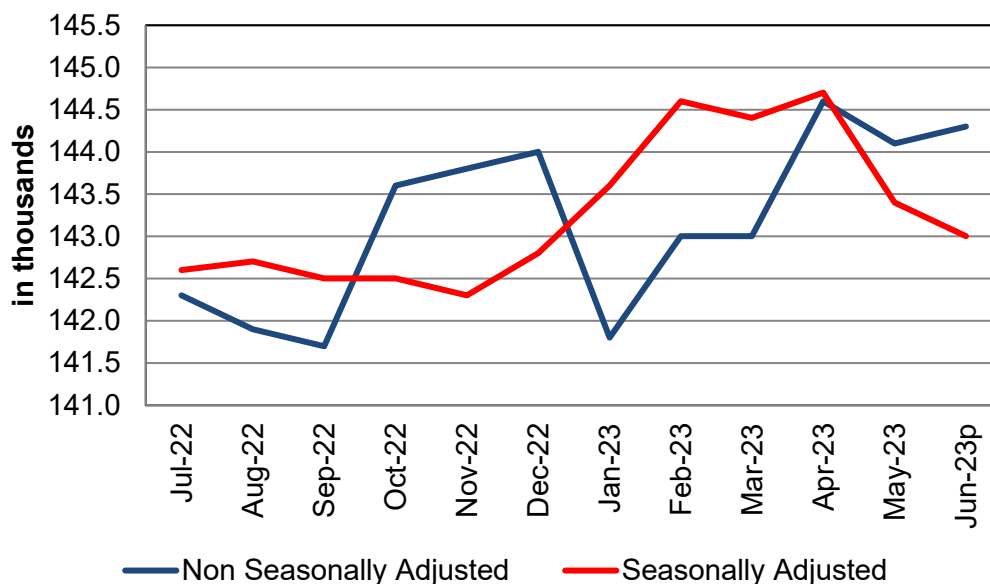
The Cedar Rapids metropolitan statistical area gained 200 jobs from May bringing total nonfarm employment to 144,300.

The area experienced gains in the majority of sectors, adding jobs in: mining, logging and construction (+200), leisure and hospitality (+200), manufacturing (+100), trade, transportation and warehousing (+100), financial activities (+100), and educational and health services (+100). Unfortunately, the gains were not enough to negate the loss in government (-600), fueled by a loss of 700 in local government.

Employment was unchanged from May in three sectors: information, professional and business services and other services. Information and other services are both unchanged over the year as well. Employment in both sectors has not fluctuated more than +/- 100 in that period.

Over the year the metro area has gained 700 jobs, led by a gain of 1,400 in educational and health services. Smaller gains were seen in a couple of sectors, including: manufacturing (+300) and professional and business services (+400). Multiple sectors experienced employment declines, which served to partially offset the overall gains in the metro area. Most notably, trade, transportation and warehousing, which trimmed 800 jobs.

Cedar Rapids - Nonfarm Employment



For additional information, contact Dennis Schwartz (515-281-5754)

IOWA NONFARM EMPLOYMENT

IOWA WORKFORCE DEVELOPMENT

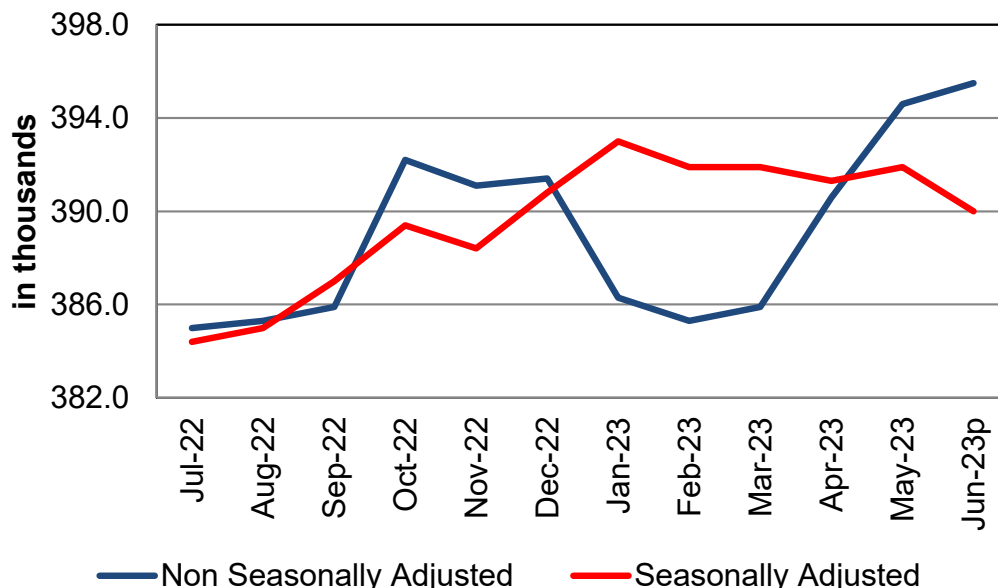
June 2023

| Des Moines/West Des Moines Metropolitan Statistical Area | | | |
|--|--------------------|-------------------------|-----------------|
| Total Nonfarm 2023 (prelim) | Total Nonfarm 2022 | | % Change—1 Year |
| 395,500 | 386,500 | | 2.33% |
| Noteworthy Expanding & Contracting Industries (1 year) | | | |
| Wholesale trade | 8.51% | Mining, logging & const | -2.45% |

Total nonfarm employment in Des Moines increased by 900 in June, lifting the total number of jobs to 395,500. The largest gain this month was with leisure and hospitality which seasonally added 1,800 jobs as firms prepare for increased summer activity. Part of this increase was due to hiring in full-service restaurants which gained 300 jobs. Financial activities added 900 jobs thanks to hiring in both credit intermediation and insurance carriers and related activities. Smaller gains this month included mining, logging, and construction and professional and business services, both of which gained 400 jobs in June. Job losses were limited to just a few sectors but were led by education and health services, which shed 1,900 jobs. This loss was highly seasonal and due to private education firms temporarily breaking for the summer. Local schools were also responsible for government losses which shed 700 jobs at the local level.

Annually, the Des Moines Metro has gained 9,000 jobs. Education and health care has added the most jobs (+3,700). Gains have been nearly even within both sectors. Government has been propelled by hiring within local government entities and is now up 2,800 jobs. Trade and transportation is up 2,000 jobs thanks mostly to wholesale trade hiring (+1,600). Conversely, job losses have been led by financial activities (-1,100) due to declines in credit intermediation and related activities. Smaller losses included mining, logging, and construction (-600) and professional and business services (-400).

Des Moines/West Des Moines - Nonfarm Employment



For additional information, contact James Morris (515-281-8515)

IOWA NONFARM EMPLOYMENT

IOWA WORKFORCE DEVELOPMENT

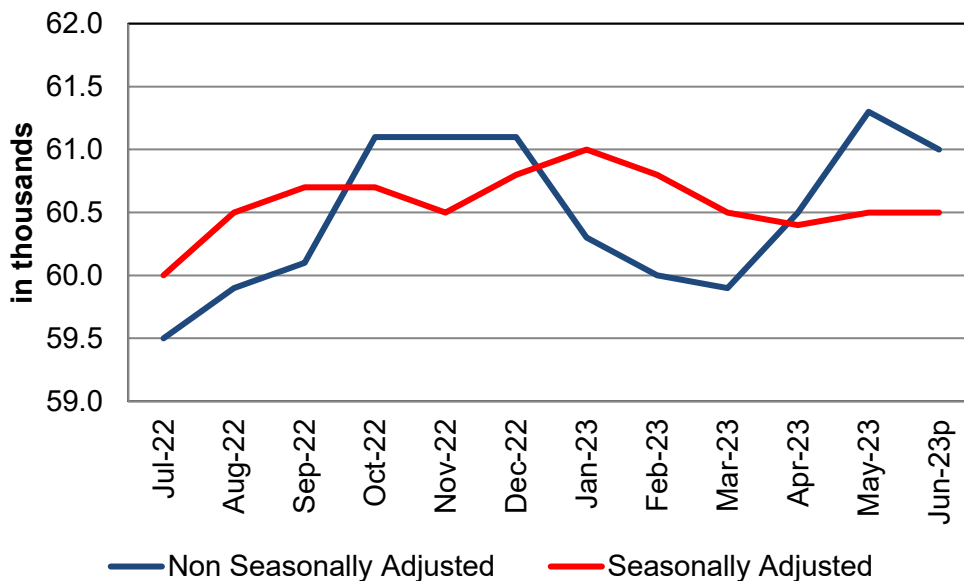
June 2023

| Dubuque Metropolitan Statistical Area | | | |
|--|--------------------|------------------|-----------------|
| Total Nonfarm 2023 (prelim) | Total Nonfarm 2022 | | % Change—1 Year |
| 61,000 | 60,700 | | 0.49% |
| Noteworthy Expanding & Contracting Industries (1 year) | | | |
| Trade & transport | 6.45% | Local government | -2.38% |

The Dubuque Metro area shed a slight 300 jobs in June, lowering total nonfarm employment to 61,000 jobs. This month's loss is not unexpected for this time of year and follows a larger-than-expected gain in May. Local government was responsible for most of the drop due to education firms breaking for the summer (-400). Private services also decreased slightly (-100) but was partially offset gain hiring within goods producing sectors (+200).

Over the past twelve months, establishments have added 300 jobs. Goods producing sectors gained 300 jobs and private service industries have added 100. Government is down slightly compared to last year (-100).

Dubuque - Nonfarm Employment



For additional information, contact James Morris (515-281-8515)

IOWA NONFARM EMPLOYMENT

IOWA WORKFORCE DEVELOPMENT

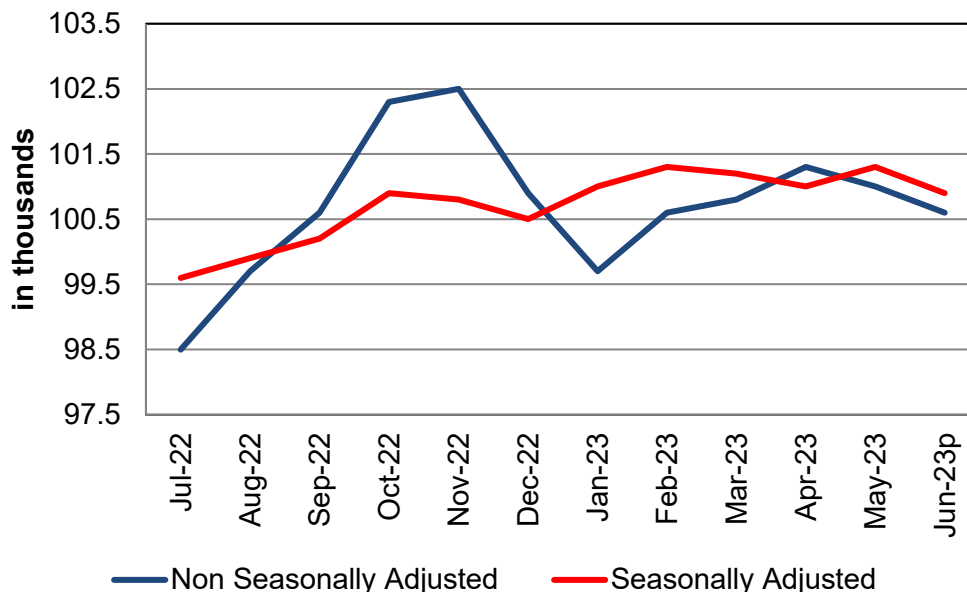
June 2023

| Iowa City Metropolitan Statistical Area | | | |
|--|--------------------|------------------|--------|
| Total Nonfarm 2023 (prelim) | Total Nonfarm 2022 | % Change—1 Year | |
| 100,600 | 99,000 | 1.62% | |
| Noteworthy Expanding & Contracting Industries (1 year) | | | |
| Leisure & hospitality | 4.08% | Local government | -2.50% |

Employment in the Iowa City metropolitan statistical area (MSA) declined by 400 between May and June, a decrease of 0.4 percent over-the-month. Primarily responsible for the contraction were job losses in the private service-providing sector, as employers in the sector pared 500 positions. Much of these losses occurred in trade, transportation, and utilities, which shrank by 200 positions. Employment in the goods-producing sector grew by 100 positions month-to-month. Employment in the public sector was virtually unchanged.

Employment in the MSA rose by 1,600 over-the-year, an increase of 1.6 percent. This increase occurred primarily within the state government and private service-providing sectors. As a whole, service-providing employment grew by 1,500 positions, with 1,000 of those positions belonging to state government employers and 700 belonging to private service-providing employers; employment within the local government sector fell by 200 positions. Among private service-providing establishments, employment within accommodation and food services grew by 500 positions. Goods-producing employment rose by 100 positions, while federal government employment was unchanged.

Iowa City - Nonfarm Employment



For additional information, contact Daniel Edwards (515-281-7547)

IOWA NONFARM EMPLOYMENT

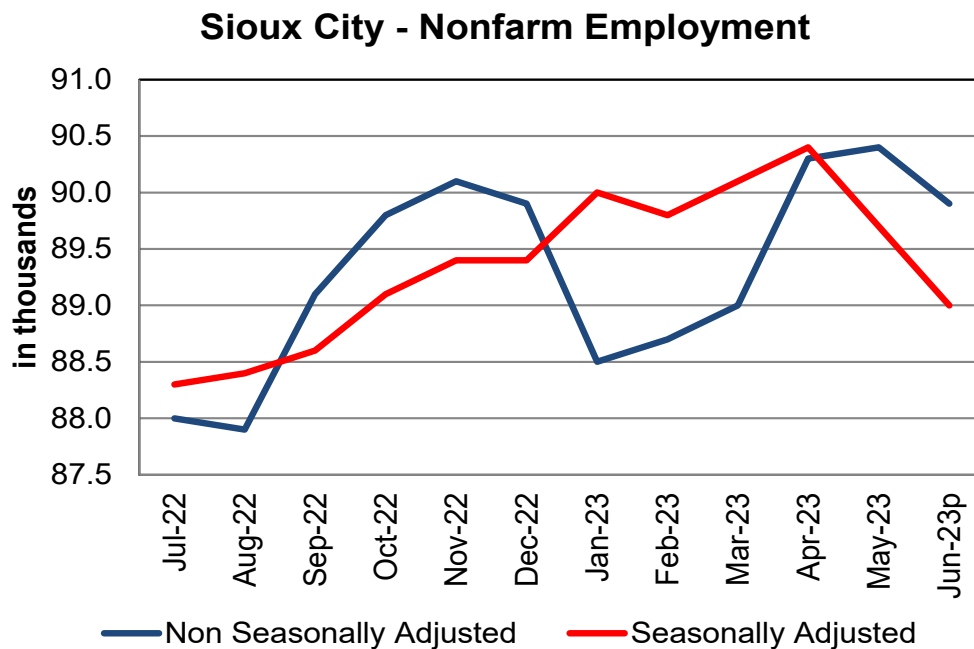
IOWA WORKFORCE DEVELOPMENT

June 2023

| Sioux City Metropolitan Statistical Area | | | |
|--|--------------------|-----------------|--------|
| Total Nonfarm 2023 (prelim) | Total Nonfarm 2022 | % Change—1 Year | |
| 89,900 | 88,600 | 1.47% | |
| Noteworthy Expanding & Contracting Industries (1 year) | | | |
| Local government | 8.14% | Retail trade | -4.08% |

The Sioux City MSA pared 500 jobs from May, with losses in service-providing sectors (-700) partially offset by small gains in a manufacturing (+200) and professional and business services (+100). Government shed 600 jobs, nearly all in local government. Trade, transportation and warehousing and leisure and hospitality were both unchanged.

Overall, area employment is up 1,300 jobs (+1.47%) from one year ago. Gains were led by non-durable goods manufacturing which added 900 jobs, resulting in a gain of 1,100 jobs in the manufacturing sector. Government netted an additional 600 jobs after an offset of -100 to the 700 jobs gained in local government. Leisure and hospitality employment is down 400 jobs from one year ago.



For additional information, contact James Morris (515-281-8515)

IOWA NONFARM EMPLOYMENT

IOWA WORKFORCE DEVELOPMENT

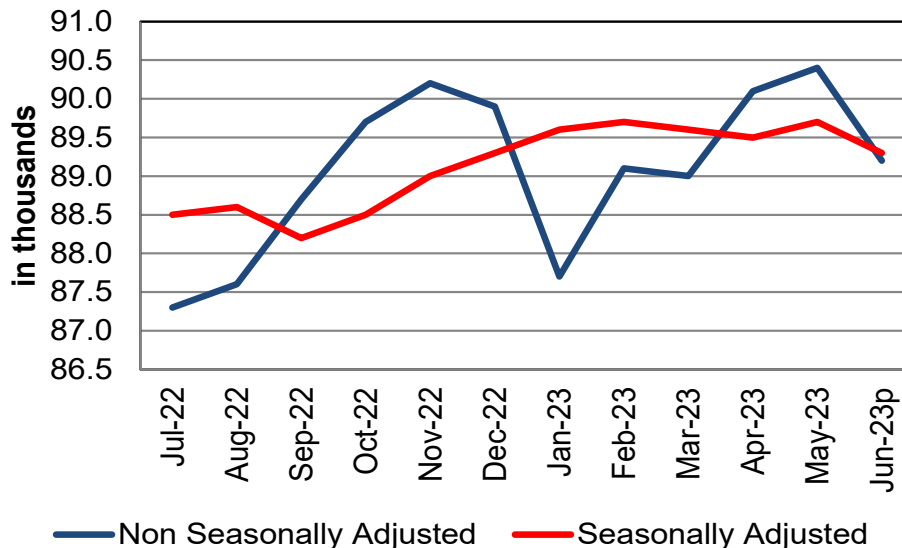
June 2023

| Waterloo/Cedar Falls Metropolitan Statistical Area | | | |
|--|--------------------|------------------|-----------------|
| Total Nonfarm 2023 (prelim) | Total Nonfarm 2022 | | % Change—1 Year |
| 89,200 | 88,400 | | 0.90% |
| Noteworthy Expanding & Contracting Industries (1 year) | | | |
| Educ & health services | 3.70% | State government | -17.86% |

Total nonfarm employment in the Waterloo/Cedar Falls metropolitan statistical area decreased by 1,200 jobs from May in an expected seasonal change. This brings nonfarm employment down to 89,200. Several sectors enjoyed employment gains that served as a partial offset to the seasonal losses seen in government. Sectors with gains include leisure and hospitality (+300), financial activities (+100) and manufacturing (+100). The reduction of jobs in government (-1,600) was entirely in state government and occurred as a result of the summer break in education.

Over the year the area added 800 jobs (+0.90%), aided by jobs increases in several sectors. The employment increase was led by a gain of 500 in educational and health services. Manufacturing contributed another 200 jobs and leisure and hospitality gained 100 jobs. Government employment is down 500 jobs from one year ago.

Waterloo/Cedar Falls - Nonfarm Employment



For additional information, contact Dennis Schwartz (515-281-5754)

IOWA NONFARM EMPLOYMENT

IOWA WORKFORCE DEVELOPMENT

June 2023

Click on a link below to visit web page

[Links to Additional Information](#)

[Worker Adjustment & Retraining Notification Act](#)

[U.S. Bureau of Labor Statistics](#)

[Unemployment Insurance Benefit Payments](#)

[Consumer Price Index \(CPI\)](#)

[Unemployment Insurance Benefit Paid by County](#)

[Employment Statistics for Canada](#)

[Current Employment Statistics](#)

The Current Employment Statistics (CES) program produces detailed industry estimates of employment, hours, and earnings of workers on nonfarm payrolls. CES State and Metro Area produces data for all 50 States, the District of Columbia, Puerto Rico, the Virgin Islands, and about 450 metropolitan areas and divisions. CES National Estimates produces estimates for the nation.

Each month, CES surveys approximately 131,000 businesses and government agencies, representing 670,000 individual worksites.

Equal opportunity employer/program. Auxiliary aids and services are available upon request to individuals with disabilities. For deaf and hard of hearing, use Relay 711

[Contact Information](#)

Iowa Workforce Development
Employment Statistics Bureau
1000 East Grand Avenue
Des Moines, IA 50319-0209
Tel: 515-281-8515
Tel: 800-532-9793
Fax: 515-281-8195
Email: james.morris@iwd.iowa.gov
www.iowaworkforce.org

<http://www.iowalmi.gov/>