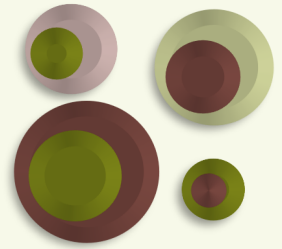
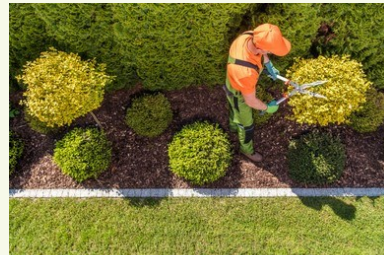
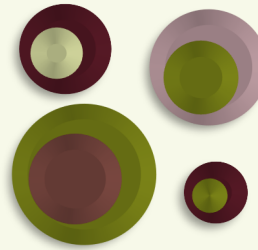


2023 IOWA INDUSTRY PROFILE

ADMINISTRATIVE SUPPORT, WASTE MANAGEMENT, & REMEDIATION

IOWA WORKFORCE DEVELOPMENT



Executive Summary

In 2022, the Administrative Support, Waste Management, and Remediation Services sector comprised 4.4 percent of all public and private sector employment in Iowa. Employment in this sector had an average annual wage of \$47,561 in 2022, which was 17.1 percent lower than the statewide average of \$57,378 for all industries. In comparison to other states in the Midwest, Indiana, Wisconsin and Ohio had lower average annual wages in the sector (\$44,433, \$44,923 and \$47,255, respectively) than Iowa's average sector wage for private employers of \$47,391.

The largest industry group in this sector (by employment) is Employment services, which consists of job placement agencies, temporary help services and other such businesses, which could have employees performing work in any of the other sectors. This industry subsector includes 26,167 jobs and represents 38.5 percent of the industry employment. The next largest industry group in this sector is Services to buildings and dwellings, with 19,862 jobs, representing 29.2 percent of the industry employment.

Employment in this sector is predominantly male, representing 53.6 percent of all employees in the sector. 24.6 percent of all those employed in the sector are between the ages of 25 and 34.



ADMINISTRATIVE SUPPORT, WASTE MANAGEMENT, & REMEDIATION IOWA INDUSTRY PROFILE



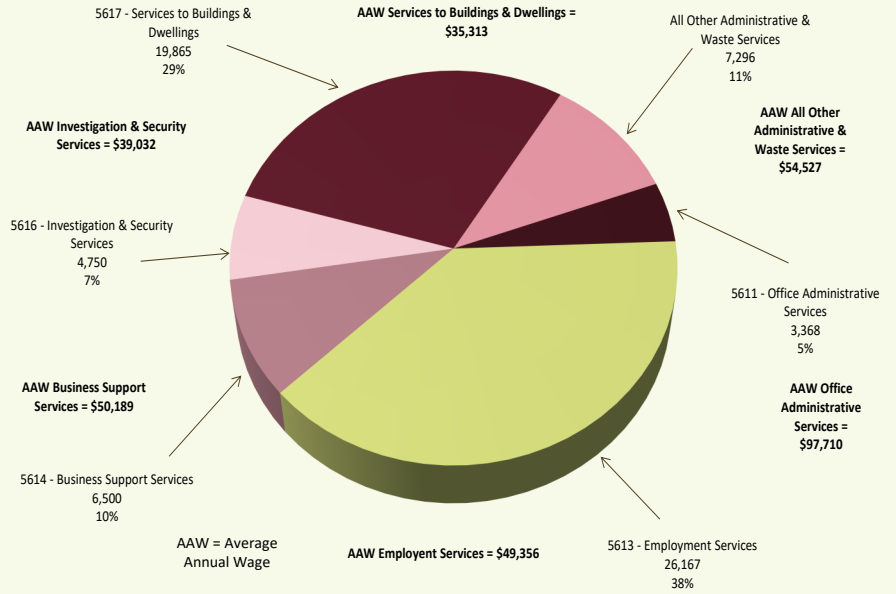
What are Administrative Support, Waste Management, and Remediation Services?

This sector comprises firms that perform routine support activities for the day-to-day operations of other organizations. The firms in this sector specialize in one or more of these support activities and provide these services to clients in a variety of industries and, in some cases, to households.

Activities performed include: office administration, hiring and placing of personnel, document preparation and similar clerical services, solicitation, collection, security and surveillance services, cleaning, and waste disposal services.

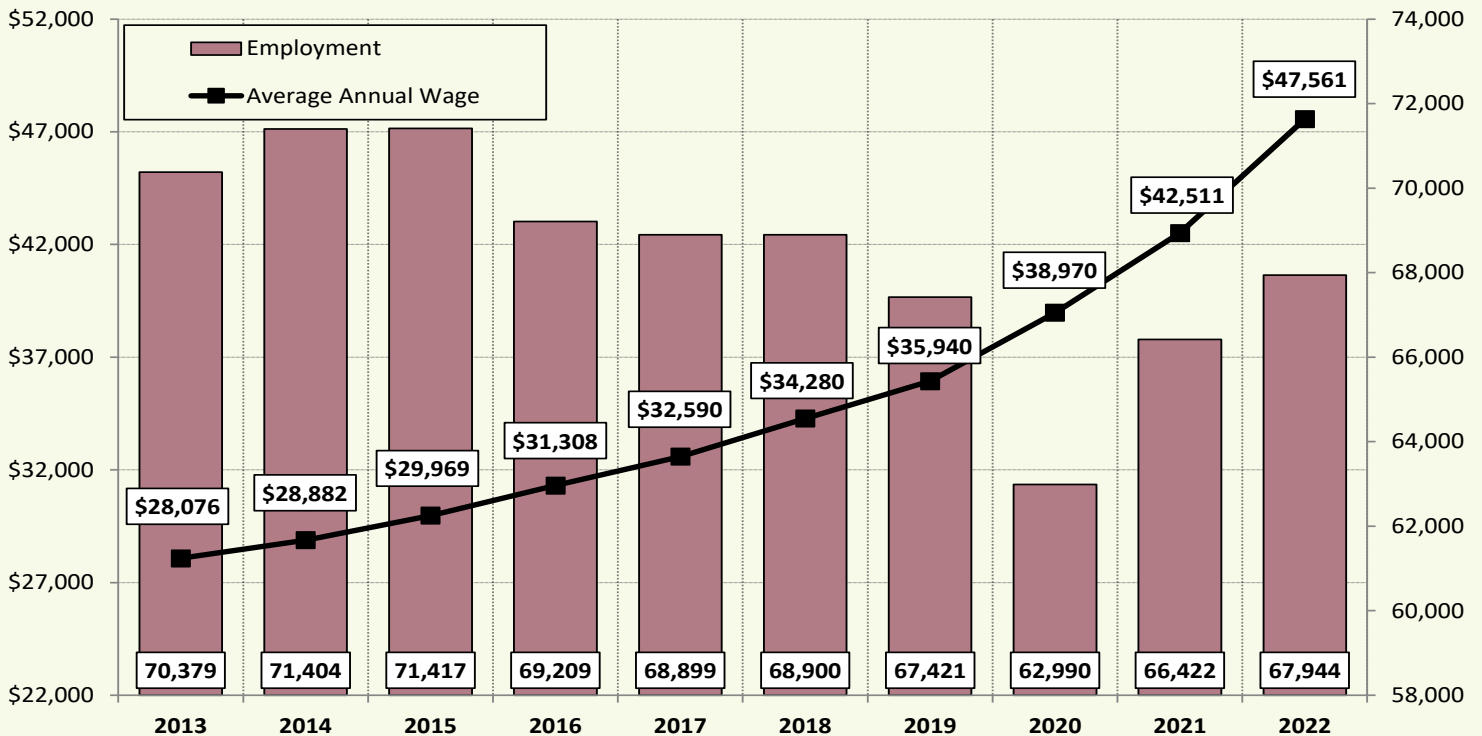
Source: www.bls.gov/cew/bls_naics/bls_naics_app.htm

2022 Industry Breakout by Employment in Iowa
Administrative Support, Waste Management & Remediation NAICS Industry Coding
Percentage Employed and Average Annual Wage by Subsector



Source: Quarterly Census of Employment and Wages (QCEW), Iowa Workforce Development

2013–2022 Employment in Administrative Support, Waste Management & Remediation in Iowa



Source: Quarterly Census of Employment and Wages (QCEW), Iowa Workforce Development

ADMINISTRATIVE SUPPORT, WASTE MANAGEMENT, & REMEDIATION IOWA INDUSTRY PROFILE



| Top Occupations in Administrative Support & Waste Management | Employment |
|--|------------|
| Janitors and Cleaners, Except Maids and Housekeeping Cleaners | 8,737 |
| Laborers and Freight, Stock, and Material Movers, Hand | 4,019 |
| Landscaping and Groundskeeping Workers | 3,854 |
| Security Guards | 3,480 |
| Customer Service Representatives | 2,992 |
| Office Clerks, General | 1,939 |
| Telemarketers | 1,328 |
| Bill and Account Collectors | 1,113 |
| Nursing Assistants | 1,100 |
| Office and Administrative Support Workers, All Other | 1,041 |
| Heavy and Tractor-Trailer Truck Drivers | 990 |
| Miscellaneous Assemblers and Fabricators | 941 |
| Construction Laborers | 834 |
| Sales Representatives of Services, Except Advertising, Insurance, Financial Services, and Travel | 829 |
| Refuse and Recyclable Material Collectors | 790 |
| Production Workers, All Other | 787 |
| Secretaries and Administrative Assistants, Except Legal, Medical, and Executive | 715 |
| Cleaners of Vehicles and Equipment | 694 |
| Computer User Support Specialists | 641 |
| Maids and Housekeeping Cleaners | 622 |

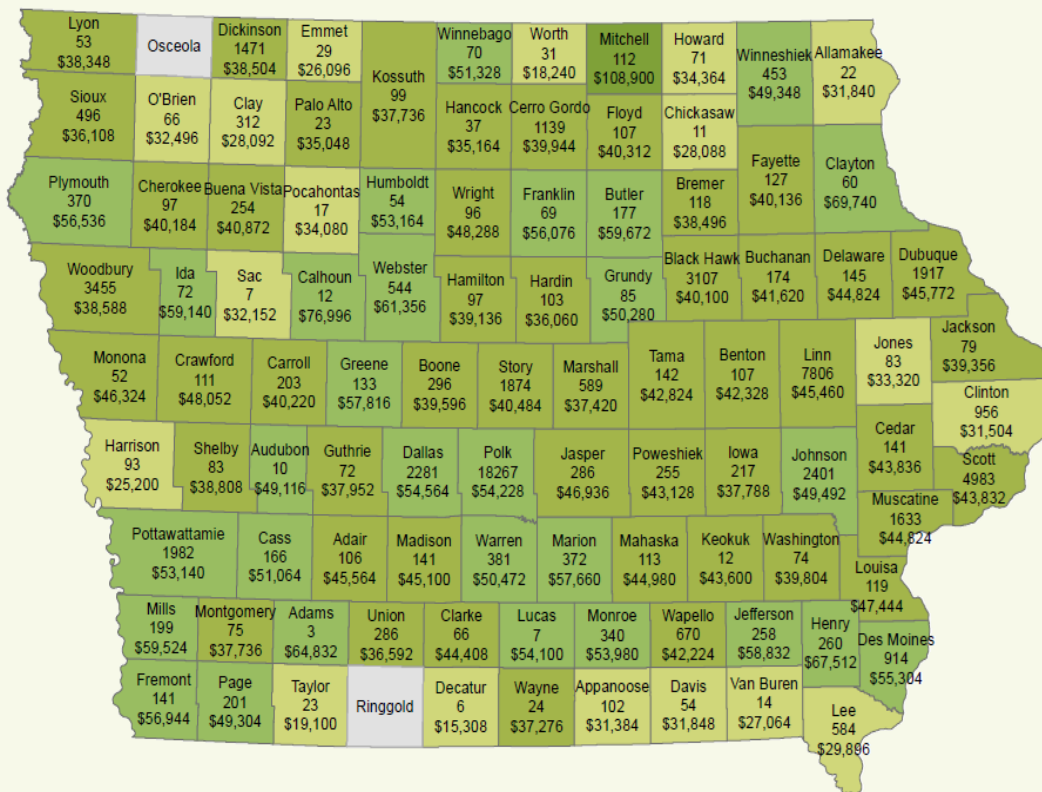
Source: Iowa Workforce Development, Labor Market Information Industry and Occupational Projections (2020-2030 Long-Term Projections)

Establishment Facts:

In 2022, there were 6,159 **Administrative support, waste management and remediation** locations across Iowa. **Services to buildings and dwellings** has the most establishments in Iowa with 2,331. **Employment services** is in a distant second with 1,372 locations across the state. **Business support services** is third with 650 establishments.

Investigation & security services represents less than 5.1 percent of all subsector establishments, accounting for only 312 locations.

2022 Covered Employment in Administrative Support, Waste Management & Remediation by County



Sector Statewide:

Employment - 67,944
Average Annual Wage - \$47,561

Label Key:
First line is the county name followed by average employment and finally, average wage.

Wages Less than \$34,364 \$34,365 - \$48,288 \$48,289 - \$76,996 Greater than \$76,997

Source: Quarterly Census of Employment and Wages (QCEW), Iowa Workforce Development

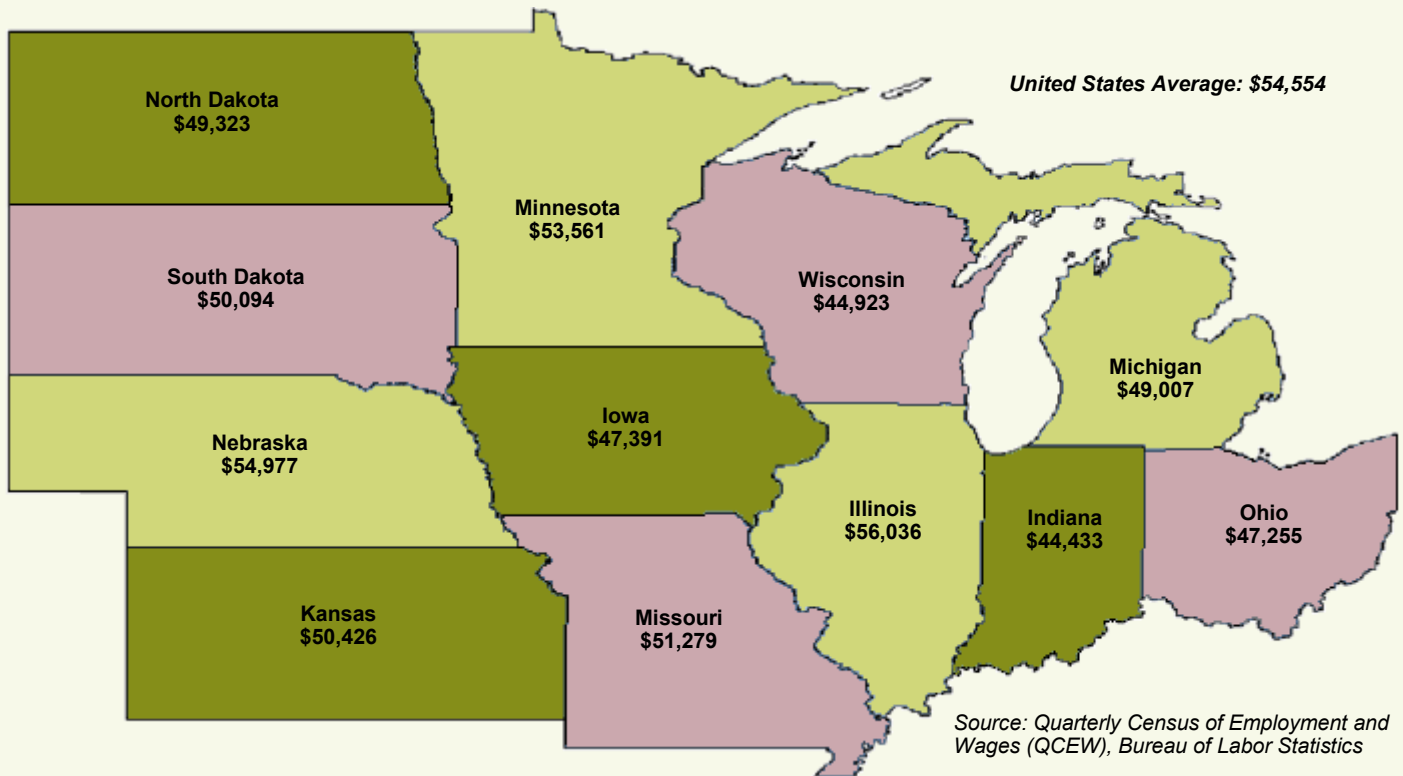
<https://www.iowalmi.gov/qcew>

ADMINISTRATIVE SUPPORT, WASTE MANAGEMENT, & REMEDIATION IOWA INDUSTRY PROFILE



2022 Average Annual Wage for Covered Employment in Admin Support, Waste Management & Remediation

State Comparisons by Private Ownership



Contact Information

Iowa Workforce Development, Employment Statistics Bureau

1000 E Grand Ave
Des Moines, IA 50319
800-532-1249

Fax: 515-281-8195
lwd.lmi@iwd.iowa.gov

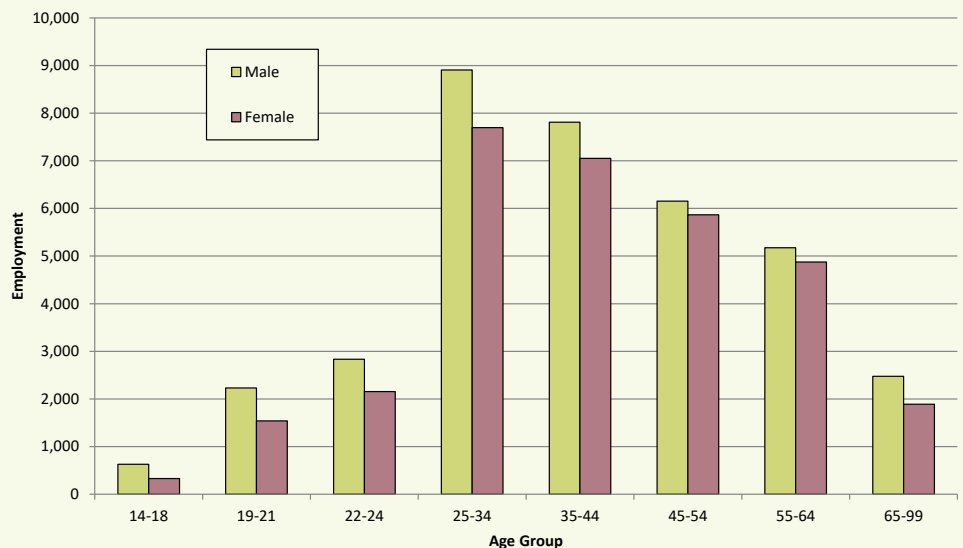
www.iowaworkforcedevelopment.gov

Equal opportunity employer/program.

Auxiliary aids and services are available upon request to individuals with disabilities.

TTY 515-281-4748
1-800-831-1399

Industry Distribution by Age and Gender, 2nd Quarter 2022



Source: Local Employment Dynamics, Iowa Workforce Development and U.S. Census Bureau
<https://lehd.ces.census.gov/>

IOWA
WORKFORCE
DEVELOPMENT

Smart. Results.

<https://www.iowalmi.gov/qcew>