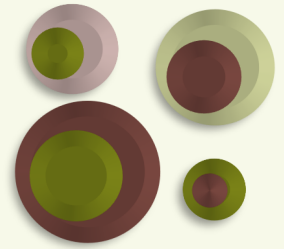
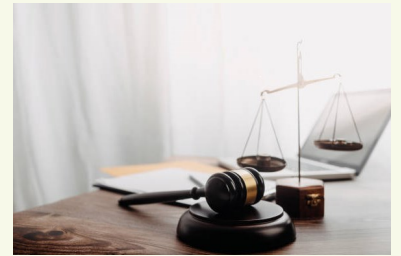
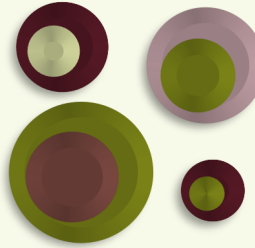


2023 IOWA INDUSTRY PROFILE

PUBLIC ADMINISTRATION

IOWA WORKFORCE DEVELOPMENT



Executive Summary

In 2022, the **Public Administration** sector comprised 2.7 percent of all covered public and private employment in Iowa. This sector reported an average annual wage of \$57,326 for 2022, which was just 0.1 percent lower than the statewide average of \$57,378 for all industries.

This sector's employment decreased by 0.7 percent between 2012 and 2022, trimming 452 jobs in that time. Employment in this sector decreased in six of the last ten years. The sector has gained 1,078 jobs (1.6 percent) from the previous year.

Executive, legislative & Other General Government, the largest subsector within this industry, employed 45,085 workers, or 66.8 percent of all sector employment. **Justice, Public Order & Safety** place a distant second with 7,637 jobs or 11.3 percent of total sector employment. **Administration of Housing & Urban Development** employed 187, representing just 0.3 of total sector employment.



PUBLIC ADMINISTRATION IOWA INDUSTRY PROFILE



What is Public Administration?

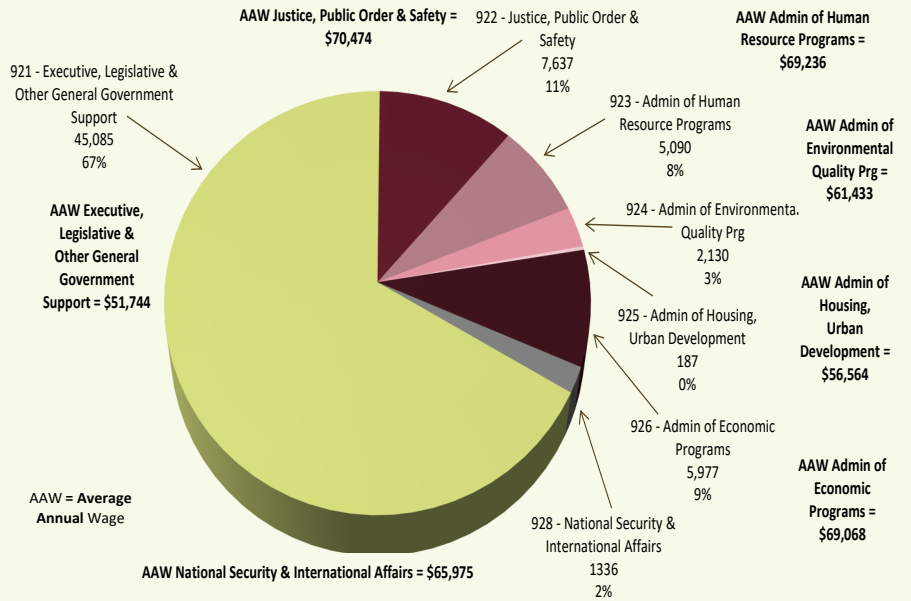
This sector consists of establishments of federal, state, and local government agencies that administer, oversee, and manage public programs and have executive, legislative, or judicial authority over other institutions within a given area. These agencies also set policy, create laws, adjudicate civil and criminal legal cases, and provide for public safety and for national defense. In general, government establishments in the Public Administration sector oversee governmental programs and activities that are not performed by private establishments.

Establishments in this sector typically are engaged in the organization and financing of the production of public goods and services, most of which are provided for free or at prices that are not economically significant.

Source: www.bls.gov/cew/bls_naics/bls_naics_app.htm

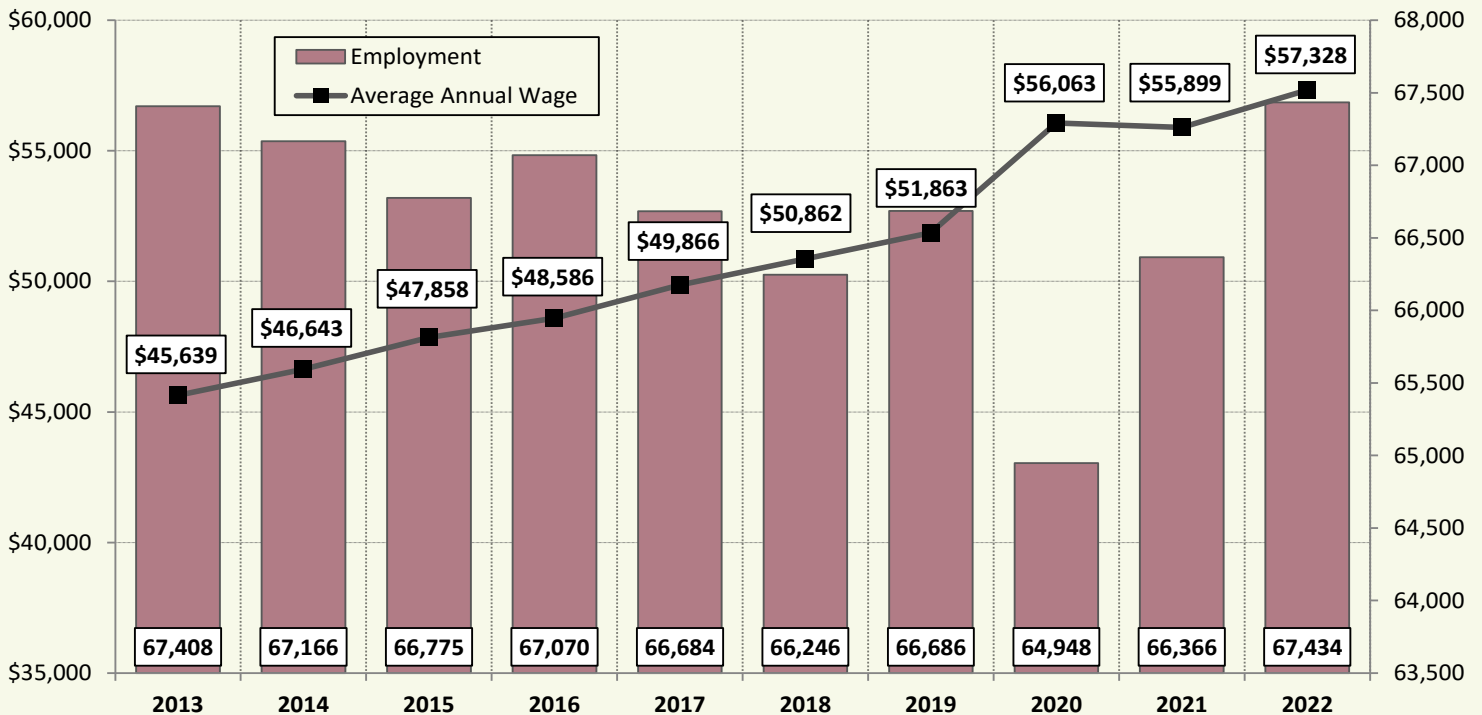
2022 Industry Breakout by Employment in Iowa

Public Administration NAICS Industry Coding
Percentage Employed and Average Annual Wage by Subsector



Source: Quarterly Census of Employment and Wages (QCEW), Iowa Workforce Development

2013–2022 Employment in Public Administration



Source: Quarterly Census of Employment and Wages (QCEW), Iowa Workforce Development

PUBLIC ADMINISTRATION IOWA INDUSTRY PROFILE



Top Occupations in Public Administration	Employment
Police and Sheriff's Patrol Officers	4,806
Postal Service Mail Carriers	3,831
Highway Maintenance Workers	3,576
Correctional Officers and Jailers	3,203
Office Clerks, General	2,073
Court, Municipal, and License Clerks	1,756
Firefighters	1,747
Recreation Workers	1,720
Project Management Specialists and Business Operations Specialists, All Other	1,602
Postal Service Mail Sorters, Processors, and Processing Machine Operators	1,568
Registered Nurses	1,551
Secretaries and Administrative Assistants, Except Legal, Medical, and Executive	1,536
Water and Wastewater Treatment Plant and System Operators	1,532
Library Assistants, Clerical	1,526
Maintenance and Repair Workers, General	1,406
Passenger Vehicle Drivers, Except Bus Drivers, Transit and Intercity	1,370
Legislators	1,318
Child, Family, and School Social Workers	1,214
Landscaping and Groundskeeping Workers	1,085
Bus Drivers, Transit and Intercity	1,032

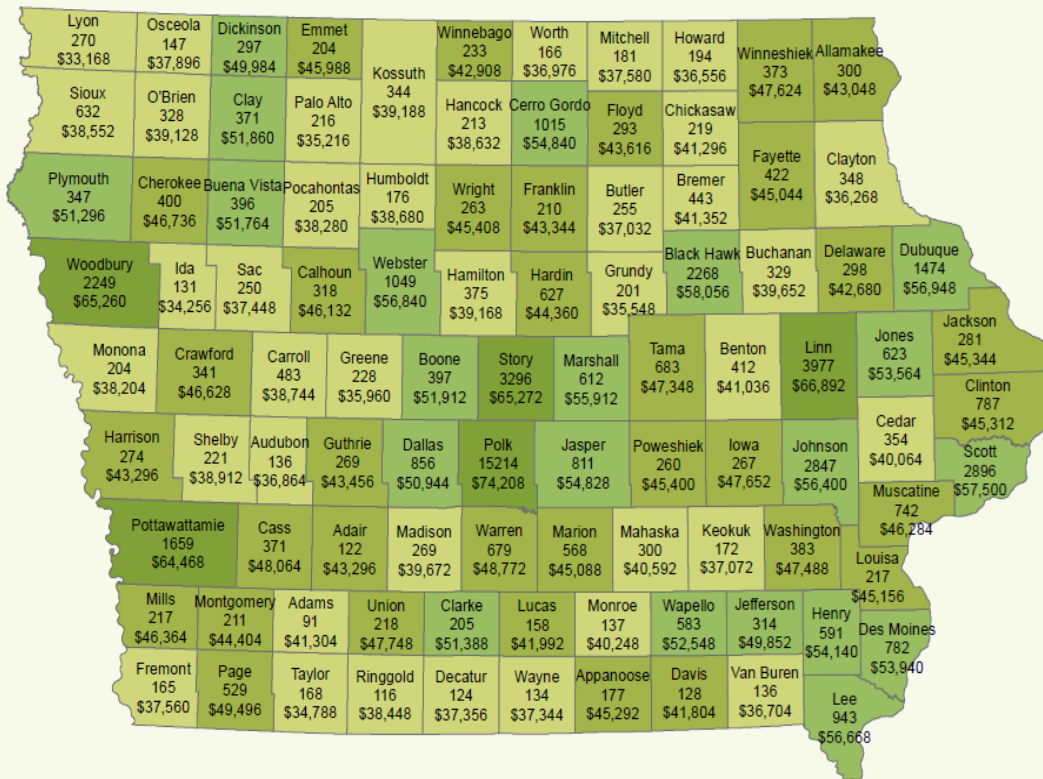
Source: Iowa Workforce Development, Labor Market Information Industry and Occupational Projections (2020-2030 Long-Term Projections)

Establishment Facts:

In 2022, there were 3,043 **Public Administration** locations across Iowa. **Executive, Legislative & Other General Government** has the most establishments in Iowa with 1,114 followed by **Administration of Environmental Quality Programs** in a distant second with 562 locations across the state. **Administration of Economic Programs** followed closely with 561 establishments.

Administration of Housing & Urban Development and **National Security & International Affairs** combine for 1.91 percent of all subsector establishments.

2022 Covered Employment in Public Administration by County



Sector Statewide:

Employment - 67,444
Average Annual Wage - \$57,326

Label Key:
First line is the county name followed by average employment and finally, average wage.

Wages ■ Less than \$41,352 ■ \$41,353 - \$49,496 ■ \$49,497 - \$58,056 ■ Greater than \$58,057

Source: Quarterly Census of Employment and Wages (QCEW), Iowa Workforce Development

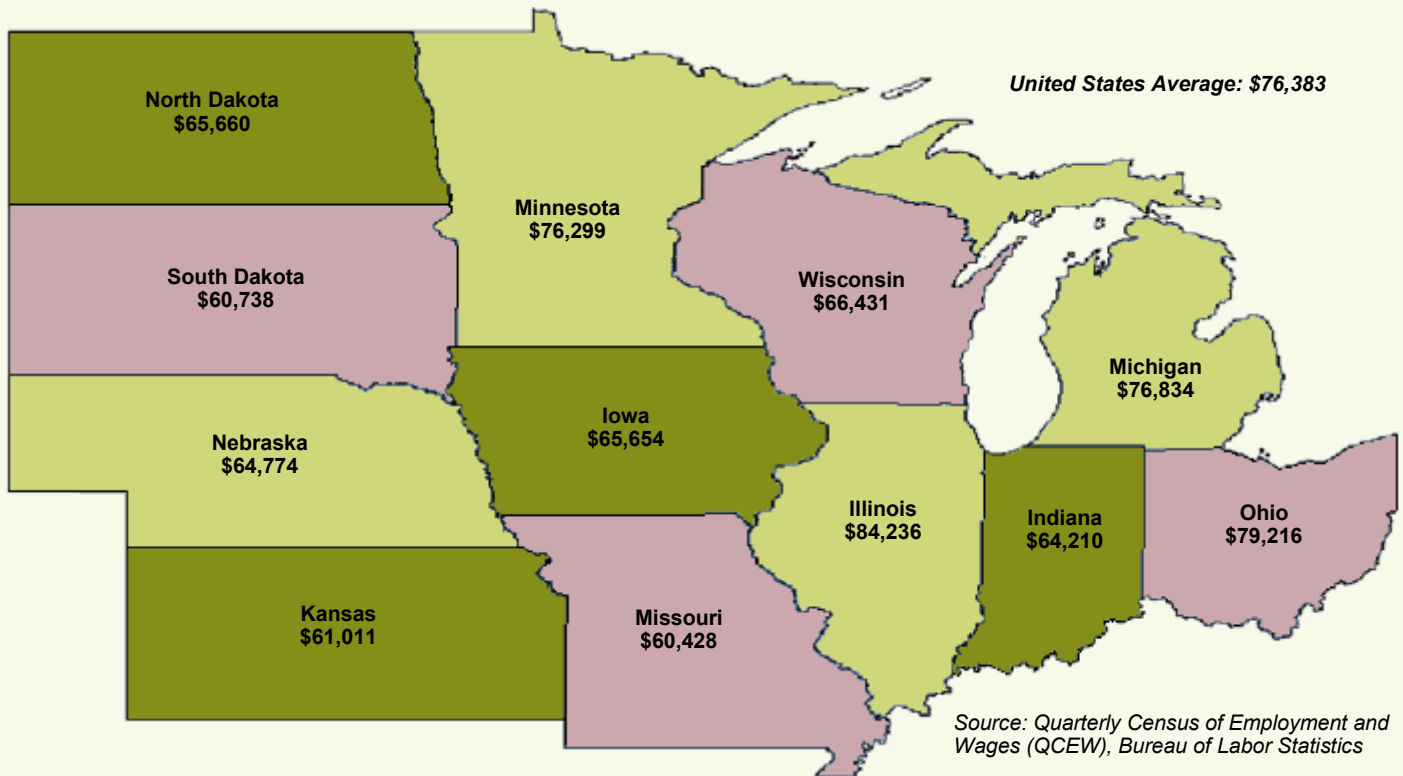
<https://www.iowalmi.gov/qcew>

PUBLIC ADMINISTRATION IOWA INDUSTRY PROFILE



2022 Average Annual Wage for Covered Employment in Public Administration

State Comparisons by Private Ownership



Contact Information

Iowa Workforce Development, Employment Statistics Bureau

1000 E Grand Ave
Des Moines, IA 50319
800-532-1249

Fax: 515-281-8195
lwd.lmi@iwd.iowa.gov

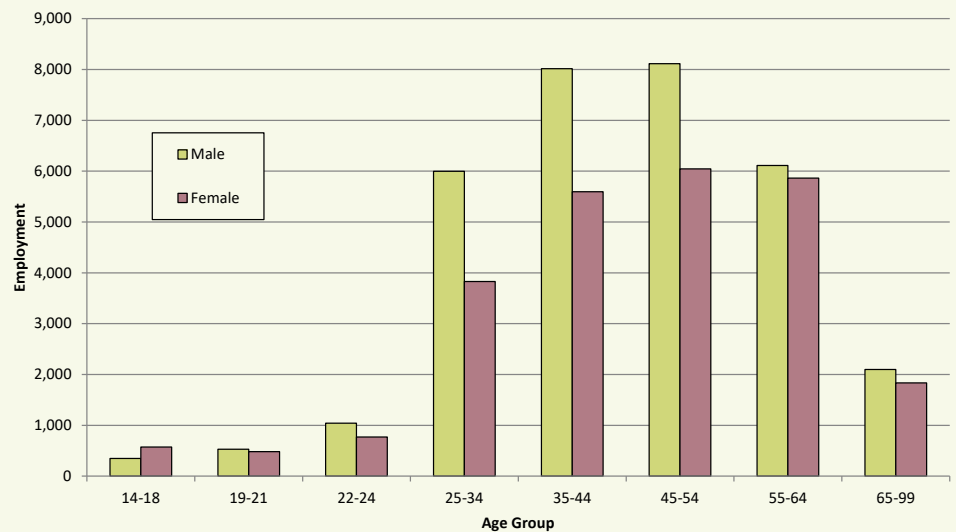
www.iowaworkforcedevelopment.gov

Equal opportunity employer/program.

Auxiliary aids and services are available upon request to individuals with disabilities.

TTY 515-281-4748
1-800-831-1399

Industry Distribution by Age and Gender, 2nd Quarter 2022



Source: Local Employment Dynamics, Iowa Workforce Development and U.S. Census Bureau
<https://lehd.ces.census.gov/>

IOWA
WORKFORCE
DEVELOPMENT

Smart. Results.

<https://www.iowalmi.gov/qcew>