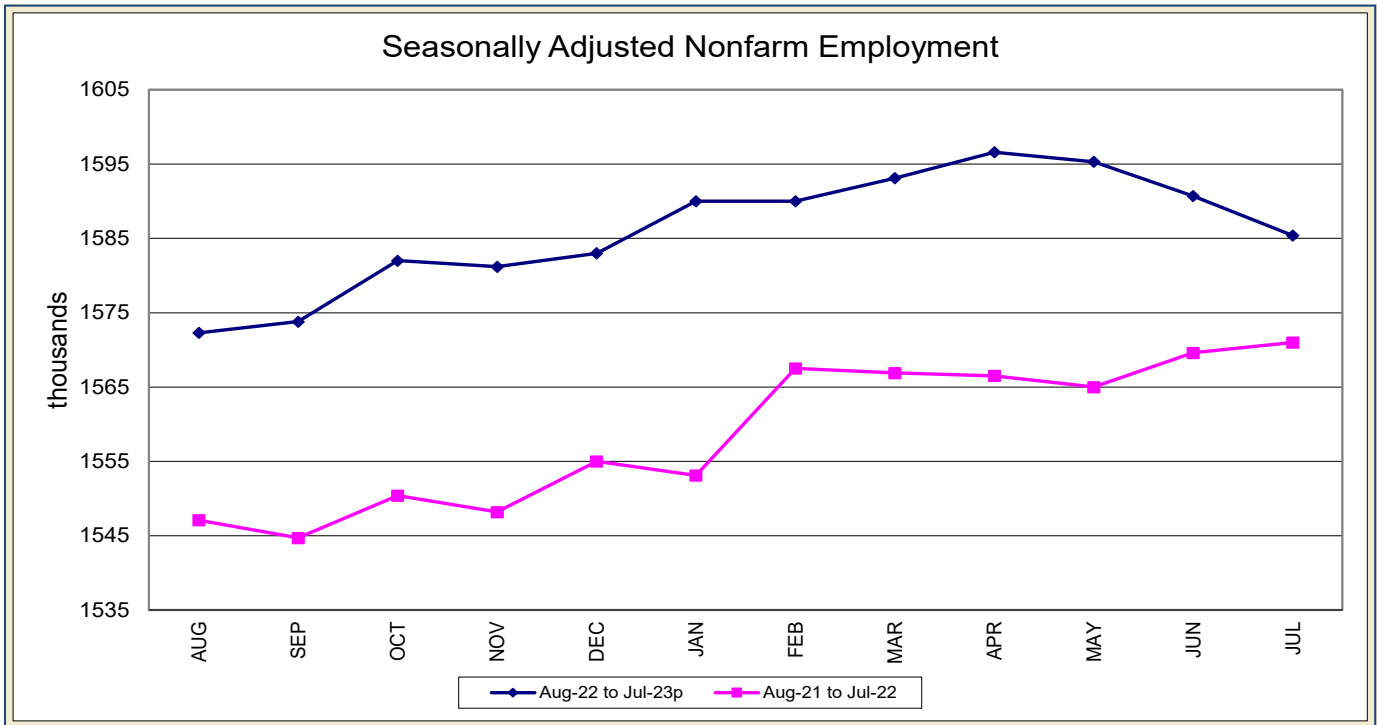


IOWA NONFARM EMPLOYMENT

IOWA WORKFORCE DEVELOPMENT

July 2023

Nonfarm Employment Experiences Third Consecutive Loss



Iowa businesses shed 5,300 jobs in July, lowering total nonfarm employment to 1,585,400. Following a June downward revision, this loss is now the third consecutive monthly drop in payroll with monthly losses being evident in both service and goods producing industries. Professional and business services has pared jobs for four consecutive months and, along with leisure and hospitality, led all other sectors in jobs shed this month. Despite the loss, Iowa's businesses are still up 14,400 jobs relative to last year. Private industry employers are responsible for most of the increase (+11,700), although government entities advanced by 300 this month and now rest up 2,700 jobs over the past twelve months.

Accommodations and food services shed the most jobs in July (-2,000). Much of the loss was due to restaurants reigning in employment

this month. The loss follows a smaller decline of 700 jobs in June. Arts and entertainment also shed jobs in July (-300), snapping a string of gains over the prior three months. Administrative support and waste management pared 1,200 jobs in July and fueled a decline of 2,000 jobs for professional and business services. Professional, scientific, and technical services shed 700 jobs this month and has shed 2,800 since March. Trade, transportation, and utilities lost 900 jobs and is now down 1,400 jobs over the past three months. Both transportation and warehousing along with retail have been a drag on employment recently. Conversely, job gains were small in magnitude in July and included education and health care (+400) and information (+200).

Compared to last year, total nonfarm employment has gained 14,400 jobs. Education and health

care has gained 10,100 jobs with a slight majority stemming from health care and social assistance. Leisure and hospitality industries are up 3,900 jobs and has been lifted by arts and entertainment (+2,500). Smaller increases occurred in manufacturing (+1,700) and construction (+1,300). Job losses have been heaviest in professional and business services (-6,400) with administrative support and waste management fueling much of the decline.

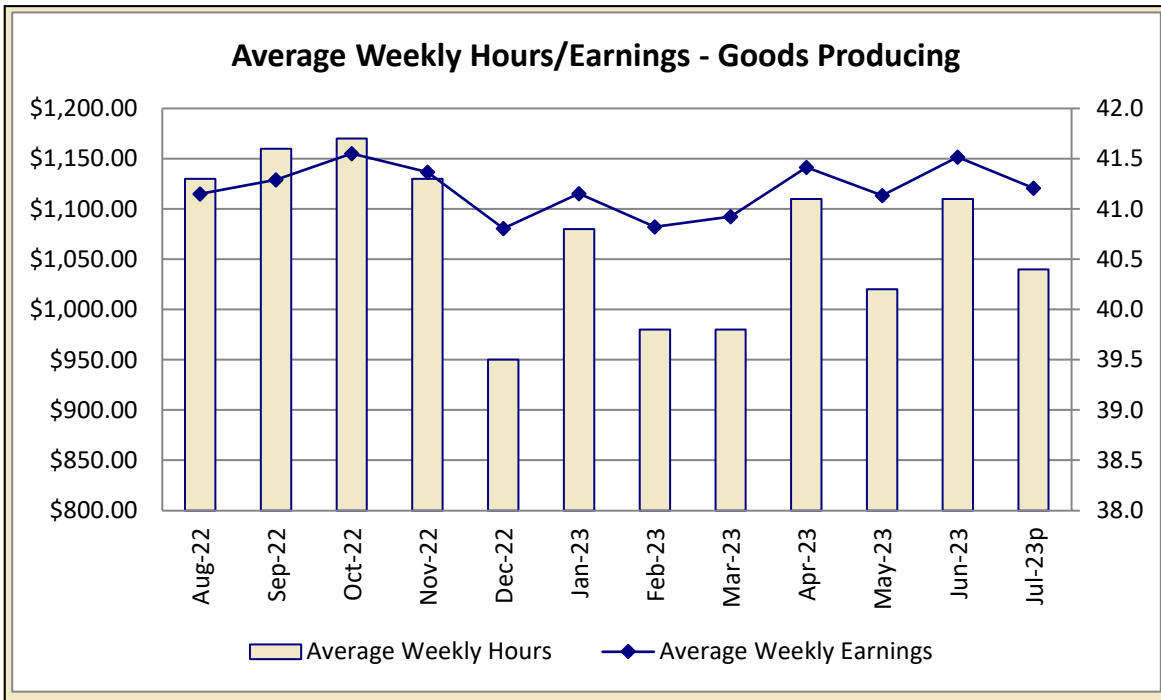
Nationally, total nonfarm employment added 187,000 jobs in July. Health care gained 63,000 jobs and social assistance added 24,000. This month's gain was markedly below the prior twelve-month average gain of 312,000 jobs.

IOWA NONFARM EMPLOYMENT

IOWA WORKFORCE DEVELOPMENT

July 2023

IOWA'S HOURS & EARNINGS

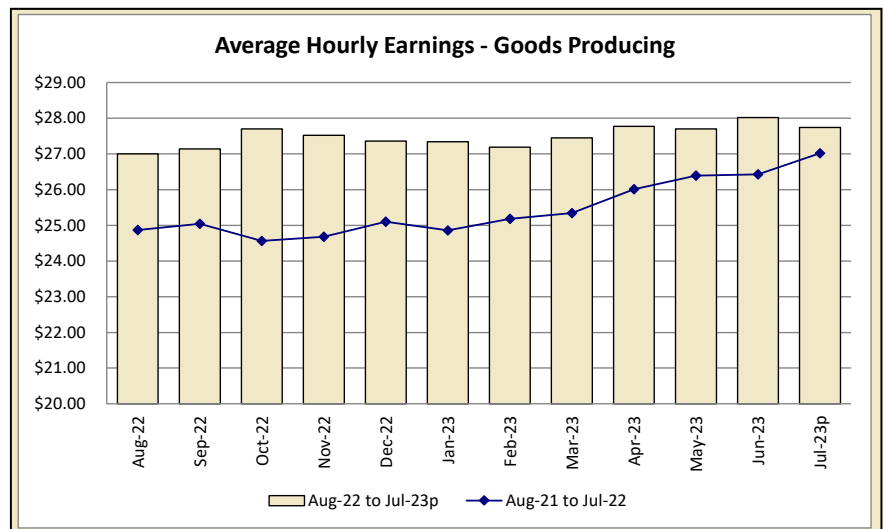


Production workers in Iowa's goods-producing sectors earned \$1,120.70 in July, up a slight \$7.48 compared to last year. Hourly earning increases have more than matched a decline of 48 minutes in average weekly schedules. Construction hourly and non-salaried production workers have shed almost two hours from weekly schedules and earned \$1,277.19 per week in July, up \$6.69 compared to last year. Manufacturing workers averaged \$975.26, up \$22.78 versus last year.

Within service sectors, retail workers have gained \$44.12 over the past twelve months and averaged \$525.26 in July. The increase was mostly due to an hourly increase of \$1.35. Finance workers added \$8.87 compared to last year and earned \$1,154.81 per week.

| Goods-producing Hours & Earnings | |
|----------------------------------|------------|
| Average Weekly Earnings | \$1,120.70 |
| Average Hourly Earnings | \$27.74 |
| Average Weekly Hours | 40.4 |

For additional information,
contact James Morris (515-281-8515)



IOWA NONFARM EMPLOYMENT

IOWA WORKFORCE DEVELOPMENT

July 2023

METROPOLITAN STATISTICAL AREAS

SEASONALLY ADJUSTED NONFARM EMPLOYMENT (TOTAL NONFARM)

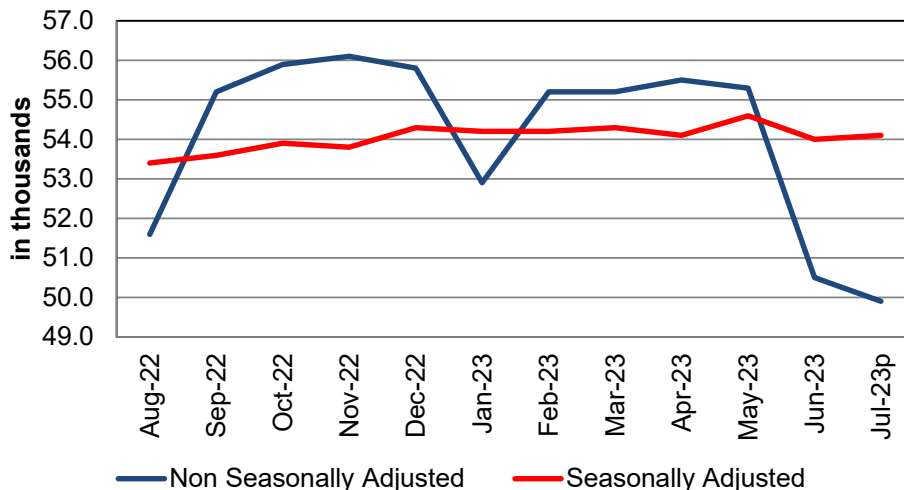
| MSA | Jul-22 | Aug-22 | Sep-22 | Oct-22 | Nov-22 | Dec-22 | Jan-23 | Feb-23 | Mar-23 | Apr-23 | May-23 | Jun-23 | Jul-23p |
|------------------------|--------|--------|--------|--------|--------|--------|--------|--------|--------|--------|--------|--------|---------|
| AMES | 53.9 | 53.4 | 53.6 | 53.9 | 53.8 | 54.3 | 54.2 | 54.2 | 54.3 | 54.1 | 54.6 | 54.0 | 54.1 |
| CEDAR RAPIDS | 142.6 | 142.7 | 142.5 | 142.5 | 142.3 | 142.8 | 143.6 | 144.6 | 144.4 | 144.7 | 143.4 | 142.9 | 143.1 |
| DES MOINES/W. DES MOIN | 384.4 | 385.0 | 387.0 | 389.4 | 388.4 | 390.8 | 393.0 | 391.9 | 391.9 | 391.3 | 391.9 | 389.5 | 389.9 |
| DUBUQUE | 60.0 | 60.5 | 60.7 | 60.7 | 60.5 | 60.8 | 61.0 | 60.8 | 60.5 | 60.4 | 60.5 | 60.3 | 60.0 |
| IOWA CITY | 99.6 | 99.9 | 100.2 | 100.9 | 100.8 | 100.5 | 101.0 | 101.3 | 101.2 | 101.0 | 101.3 | 100.5 | 100.0 |
| SIOUX CITY | 88.3 | 88.4 | 88.6 | 89.1 | 89.4 | 89.4 | 90.0 | 89.8 | 90.1 | 90.4 | 89.7 | 89.0 | 88.8 |
| WATERLOO/CEDAR FALLS | 88.5 | 88.6 | 88.2 | 88.5 | 89.0 | 89.3 | 89.6 | 89.7 | 89.6 | 89.5 | 89.7 | 89.4 | 89.6 |

| Ames Metropolitan Statistical Area | | | |
|--|--------------------|------------------|-----------------|
| Total Nonfarm 2023 (prelim) | Total Nonfarm 2022 | | % Change—1 Year |
| 49,900 | 50,000 | | -0.20% |
| Noteworthy Expanding & Contracting Industries (1 year) | | | |
| Pvt service providing | 0.40% | State government | -1.80% |

Employment in the Ames metropolitan statistical area (MSA) fell by 600 between June and July, a decrease of 1.2 percent over-the-month. Employment in the MSA historically ebbs during the summer months, as activity slows at the area's primary and secondary schools, as well as its state university. Local government was responsible for most of the decline in employment, with payrolls shrinking by 400 positions month-to-month. State government pared 100 positions. In the private sector, goods-producing establishments trimmed 100 positions monthly.

Employment in the MSA contracted by 100 over-the-year, a decrease of 0.2 percent. The largest shift in employment occurred in state government, which reduced employment by 200 positions year-over-year. Private service-providing establishments added 100 positions annually. Employment in all other sectors was unchanged annually.

Ames - Nonfarm Employment



For additional information, contact Daniel Edwards (515-281-7547)

IOWA NONFARM EMPLOYMENT

IOWA WORKFORCE DEVELOPMENT

July 2023

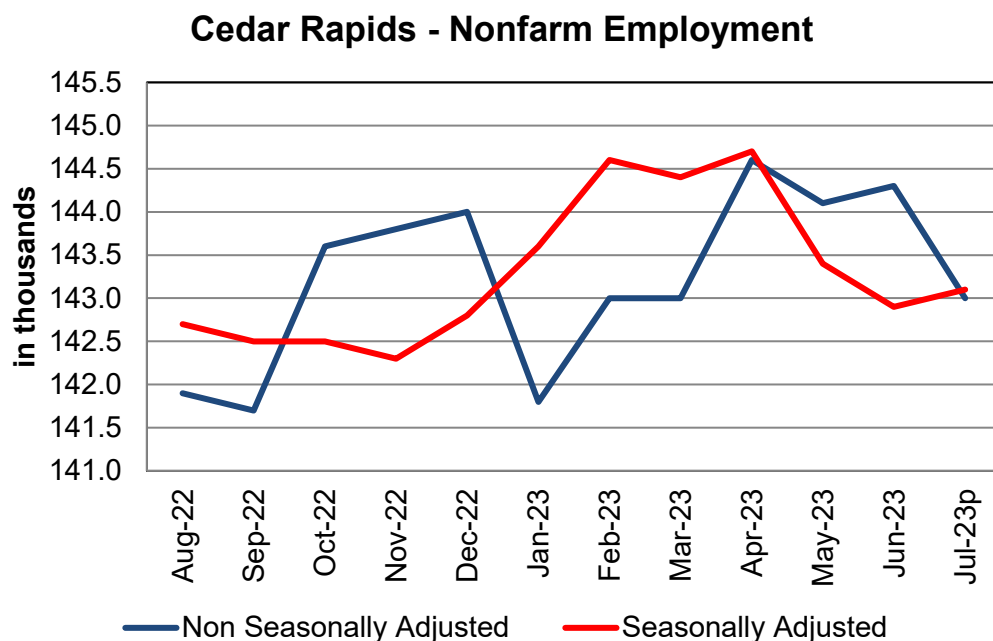
| Cedar Rapids Metropolitan Statistical Area | | | |
|--|--------------------|------------------|---------|
| Total Nonfarm 2023 (prelim) | Total Nonfarm 2022 | % Change—1 Year | |
| 143,000 | 142,300 | 0.49% | |
| Noteworthy Expanding & Contracting Industries (1 year) | | | |
| Educ & health services | 5.80% | State government | -10.00% |

The Cedar Rapids metropolitan statistical area pared 1,300 jobs from June, bringing total nonfarm employment to 143,000.

The majority of the employment decrease was seasonal in nature and centered in the government sector. More specifically, local government, which shed 1,500 jobs as a result of the summer break. Trade, transportation and warehousing also contributed to the employment loss, although at a much smaller scale, trimming 300 jobs.

A handful of sectors added jobs, providing a partial offset to the jobs losses in government and trade, transportation and warehousing. Most notably, manufacturing added 300 jobs with a gain of 100 in durable goods manufacturing. The manufacturing sector has added 800 jobs since February. Mining, logging and construction added another 100 jobs.

Over the year the metro area has gained 700 jobs, led by a gain of 1,200 in educational and health services. Professional and business services gained 600 jobs, as did manufacturing. Durable goods manufacturing is responsible for 400 of the additional jobs. Multiple sectors experienced jobs losses which partially offset the annual gains. Those sectors include: trade, transportation and warehousing (-900), financial activities (-300), leisure and hospitality (-300), and government (-200).



For additional information, contact Dennis Schwartz (515-281-5754)

IOWA NONFARM EMPLOYMENT

IOWA WORKFORCE DEVELOPMENT

July 2023

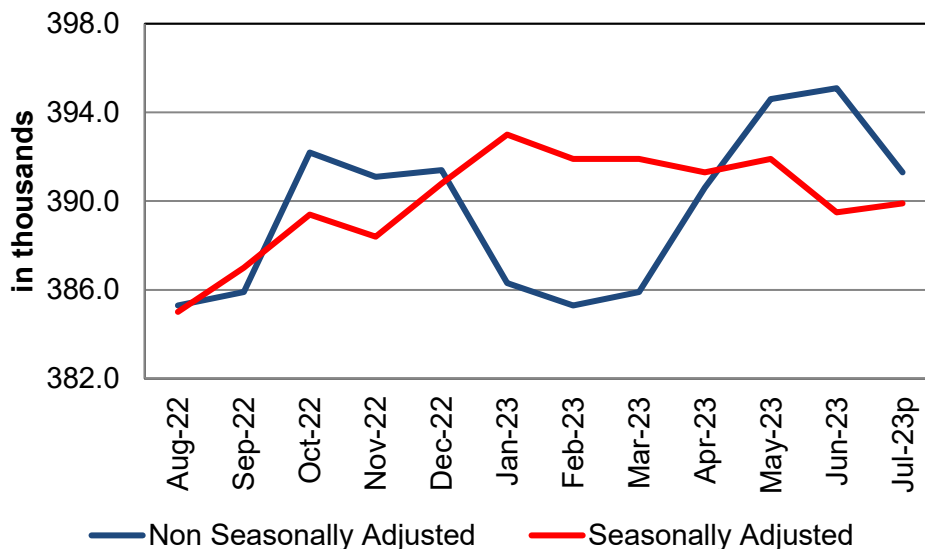
| Des Moines/West Des Moines Metropolitan Statistical Area | | | |
|--|--------------------|--------------------------|-----------------|
| Total Nonfarm 2023 (prelim) | Total Nonfarm 2022 | | % Change—1 Year |
| 391,300 | 385,000 | | 1.64% |
| Noteworthy Expanding & Contracting Industries (1 year) | | | |
| Educ. & health services | 10.12% | Prof & business services | -2.96% |

Businesses in the Des Moines Metro lost 3,800 jobs in July, lowering total nonfarm employment to 391,300 jobs. This month's loss is not unexpected for this time of year and was largely the result of seasonal jobs shed in public education. Overall government lost 3,200 jobs due to local schools breaking for the summer. Despite the monthly decline, government remains up 2,000 jobs annually and total nonfarm employment has added 6,300 jobs.

Leisure and hospitality pared 800 jobs following a relatively prosperous June. This sector is now up just 300 jobs versus last year. Trade, transportation, and utilities shed 700 jobs with much of the decline stemming from retail trade. Professional and business services posted the only other major sector loss in July (-500). This sector was primarily hindered by layoffs in administrative support and waste management. Conversely, job gains were fueled by health care and social assistance (+1,200). Both health care and education services have been trending up over the past twelve months although education was little changed in July. Mining, logging, and construction gained 400 jobs. Most of the jobs gained were in specialty trade contractors (+300).

Annually, education and health care have added the most jobs (+5,200). Education services has fueled most of the increase (+2,900) despite being flat this month. Trade, transportation, and warehousing has added 1,800 with most of the increase stemming from wholesale trade hiring. On the other hand, annual job losses were heaviest in professional and business services (-1,600), specifically white collar professional, scientific, and technical services. Finance and insurance has also trended down over the past twelve months (-1,300). Most of the downward movement stemmed from credit intermediation and related activities; insurance carriers and related activities saw little change versus last year.

Des Moines/West Des Moines - Nonfarm Employment



For additional information, contact James Morris (515-281-8515)

IOWA NONFARM EMPLOYMENT

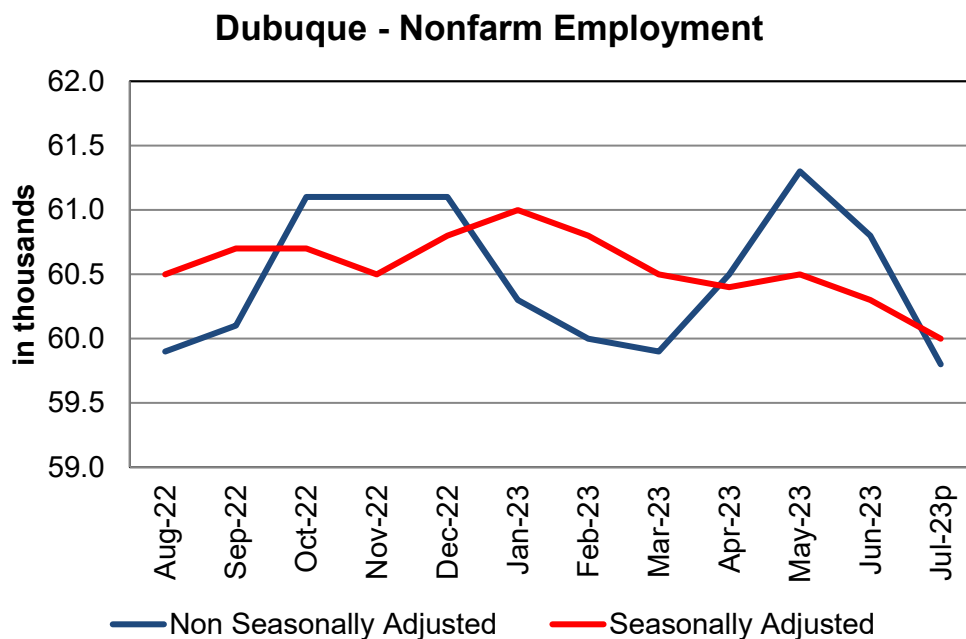
IOWA WORKFORCE DEVELOPMENT

July 2023

| Dubuque Metropolitan Statistical Area | | | |
|--|--------------------|------------------|--------|
| Total Nonfarm 2023 (prelim) | Total Nonfarm 2022 | % Change—1 Year | |
| 59,800 | 59,500 | 0.50% | |
| Noteworthy Expanding & Contracting Industries (1 year) | | | |
| Trade & transport | 4.84% | Local government | -3.03% |

Total nonfarm employment in the Dubuque Metro decreased in July (-1,000), lowering the total to 59,800. The July gain is average given the prior year history yet follows an unexpected drop in June of 500. Government shed 900 jobs at the local level as public schools broke for the summer. Private services shed a slight 100 jobs and goods producing industries saw little change compared to June.

Annually, the Dubuque Metro is up 300 jobs. Both goods producing industries and private services have added 200 jobs. Government is down a slight 100 jobs at the local level.



For additional information, contact James Morris (515-281-8515)

IOWA NONFARM EMPLOYMENT

IOWA WORKFORCE DEVELOPMENT

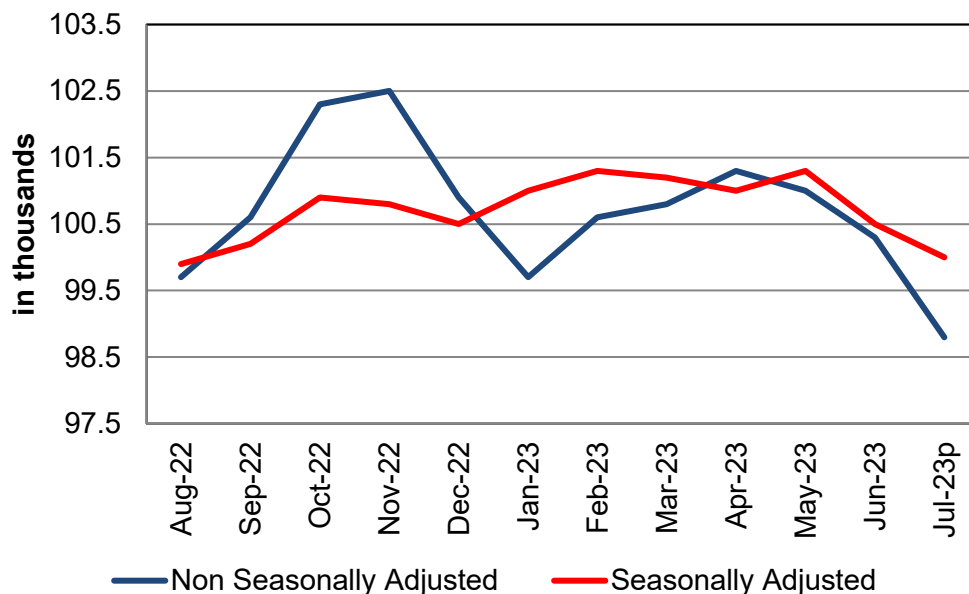
July 2023

| Iowa City Metropolitan Statistical Area | | | |
|--|--------------------|------------------|--------|
| Total Nonfarm 2023 (prelim) | Total Nonfarm 2022 | % Change—1 Year | |
| 98,800 | 98,500 | 0.30% | |
| Noteworthy Expanding & Contracting Industries (1 year) | | | |
| Leisure & hospitality | 4.08% | Local government | -2.50% |

Employment in the Iowa City metropolitan statistical area (MSA) contracted by 1,500 between June and July, a decrease of 1.5 percent month-to-month. Nearly all this decline occurred in local government, with establishments in the sector paring 1,400 positions. Elsewhere in the public sector, state government establishments added 200 positions. In the private sector, service-providing businesses lost 400 positions over-the-month. Meanwhile, goods-producing establishments added 100 positions.

Employment in the MSA rose by 300 over-the-year, an increase of 0.3 percent. Employment in the private service-providing sector grew by 400 positions, with notable increases in trade, transportation, and utilities (+200 positions) and leisure and hospitality (+200 positions). Goods-producing employment was unchanged. In the public sector, local government employment decreased by 200 positions monthly, while state government employment grew by 100 positions. Federal government employment was steady.

Iowa City - Nonfarm Employment



For additional information, contact Daniel Edwards (515-281-7547)

IOWA NONFARM EMPLOYMENT

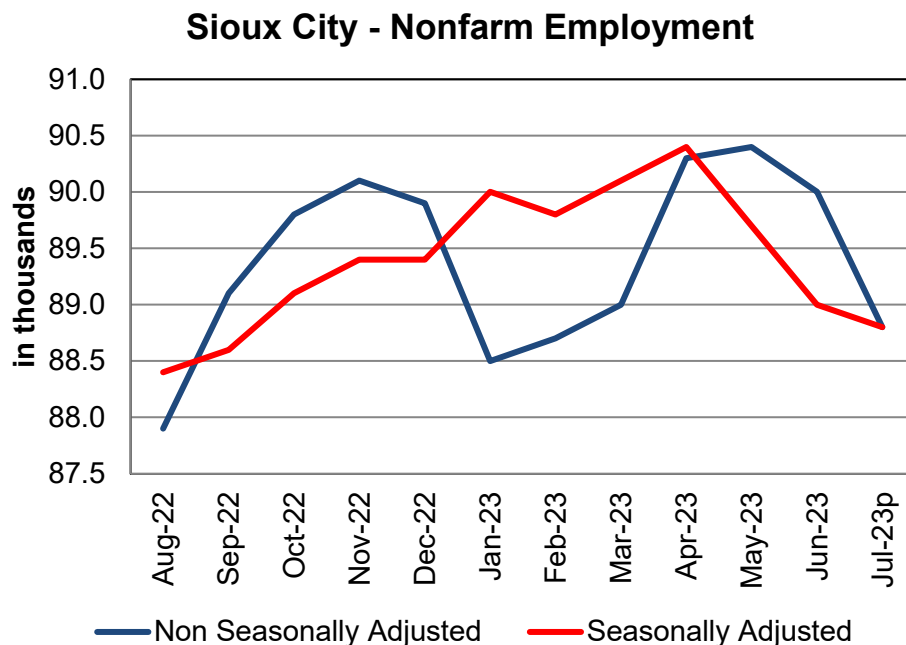
IOWA WORKFORCE DEVELOPMENT

July 2023

| Sioux City Metropolitan Statistical Area | | | |
|--|--------------------|-----------------|--------|
| Total Nonfarm 2023 (prelim) | Total Nonfarm 2022 | % Change—1 Year | |
| 88,800 | 88,000 | 0.91% | |
| Noteworthy Expanding & Contracting Industries (1 year) | | | |
| Local government | 8.75% | Retail trade | -4.17% |

The Sioux City MSA pared 1,200 jobs from June, with losses in service-providing sectors (-900) partially offset by small gains in a manufacturing (+300) and professional and business services (+100). Government shed 600 jobs, all in local government. Trade, transportation and warehousing and leisure and hospitality each trimmed 100 jobs.

Overall, area employment is up 800 jobs (+0.91%) from one year ago. Gains were led by non-durable goods manufacturing which added 1,200 jobs, resulting in a gain of 1,400 jobs in the manufacturing sector. Government netted an additional 600 jobs after an offset of -100 to the 700 jobs gained in local government. Leisure and hospitality employment is down 400 jobs from one year ago.



For additional information, contact James Morris (515-281-8515)

IOWA NONFARM EMPLOYMENT

IOWA WORKFORCE DEVELOPMENT

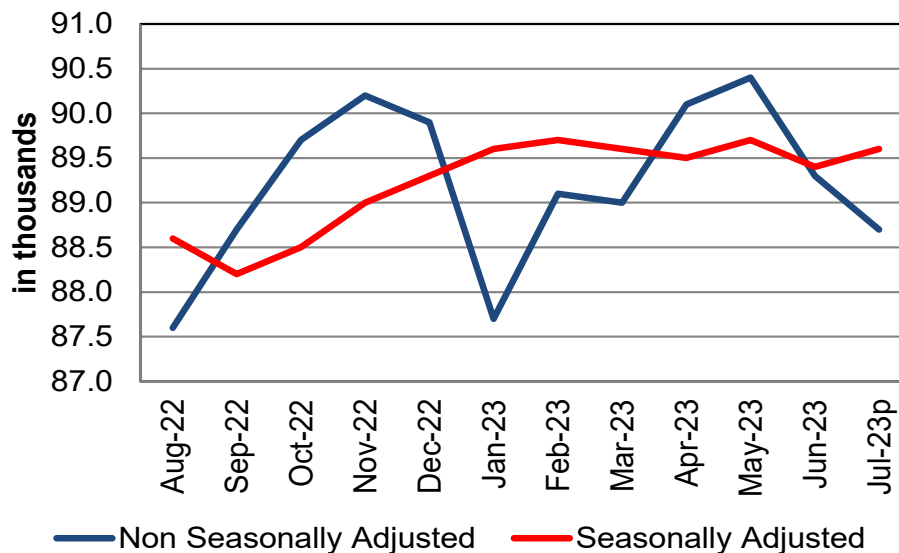
July 2023

| Waterloo/Cedar Falls Metropolitan Statistical Area | | | |
|--|--------------------|------------------|--------|
| Total Nonfarm 2023 (prelim) | Total Nonfarm 2022 | % Change—1 Year | |
| 88,700 | 87,300 | 1.60% | |
| Noteworthy Expanding & Contracting Industries (1 year) | | | |
| Educ & health services | 6.02% | State government | -4.00% |

Total nonfarm employment in the Waterloo/Cedar Falls metropolitan statistical area decreased by 600 jobs from June in an expected seasonal change. This brings nonfarm employment down to 88,700. Three sectors enjoyed employment gains that served as a partial offset to the seasonal losses seen in government. Sectors with gains include manufacturing (+100), professional and business services (+100) and educational and health services (+100). The reduction of jobs in government (-700) was shared by a combination of state government (-200) and local government education (-500). Both were likely the result of seasonal cut-backs for the summer break.

Over the year the area added 1,400 jobs (+1.60%), aided by jobs increases in several sectors. The employment increase was led by a gain of 800 in educational and health services. Manufacturing contributed 300 jobs to an overall gain of 700 jobs in goods-producing industries.

Waterloo/Cedar Falls - Nonfarm Employment



For additional information, contact Dennis Schwartz (515-281-5754)

IOWA NONFARM EMPLOYMENT

IOWA WORKFORCE DEVELOPMENT

July 2023

Click on a link below to visit web page

[Links to Additional Information](#)

[Worker Adjustment & Retraining Notification Act](#)

[U.S. Bureau of Labor Statistics](#)

[Unemployment Insurance Benefit Payments](#)

[Consumer Price Index \(CPI\)](#)

[Unemployment Insurance Benefit Paid by County](#)

[Employment Statistics for Canada](#)

[Current Employment Statistics](#)

The Current Employment Statistics (CES) program produces detailed industry estimates of employment, hours, and earnings of workers on nonfarm payrolls. CES State and Metro Area produces data for all 50 States, the District of Columbia, Puerto Rico, the Virgin Islands, and about 450 metropolitan areas and divisions. CES National Estimates produces estimates for the nation.

Each month, CES surveys approximately 131,000 businesses and government agencies, representing 670,000 individual worksites.

Equal opportunity employer/program. Auxiliary aids and services are available upon request to individuals with disabilities. For deaf and hard of hearing, use Relay 711

[Contact Information](#)

Iowa Workforce Development

Employment Statistics Bureau

1000 East Grand Avenue

Des Moines, IA 50319-0209

Tel: 515-281-8515

Tel: 800-532-9793

Fax: 515-281-8195

Email: james.morris@iwd.iowa.gov

www.iowaworkforce.org

<http://www.iowalmi.gov/>